

General Information

Location: SAL CPV
ICAO/IATA: GVAC / SID
Lat/Long: N16° 44.26', W022° 57.00'
Elevation: 184 ft

Airport Use: Public
Daylight Savings: Not Observed
UTC Conversion: +1:00 = UTC
Magnetic Variation: 10.0° W

Fuel Types: Jet A-1
Customs: Yes
Airport Type: IFR
Landing Fee: Yes
Control Tower: Yes
Jet Start Unit: No
LLWS Alert: No
Beacon: Yes

Sunrise: 0748 Z
Sunset: 1858 Z

Runway Information

Runway: 01
Length x Width: 9843 ft x 148 ft
Surface Type: asphalt
TDZ-Elev: 185 ft
Lighting: Edge, ALS, Centerline, TDZ

Runway: 19
Length x Width: 9843 ft x 148 ft
Surface Type: asphalt
TDZ-Elev: 178 ft
Lighting: Edge, ALS, Centerline, TDZ

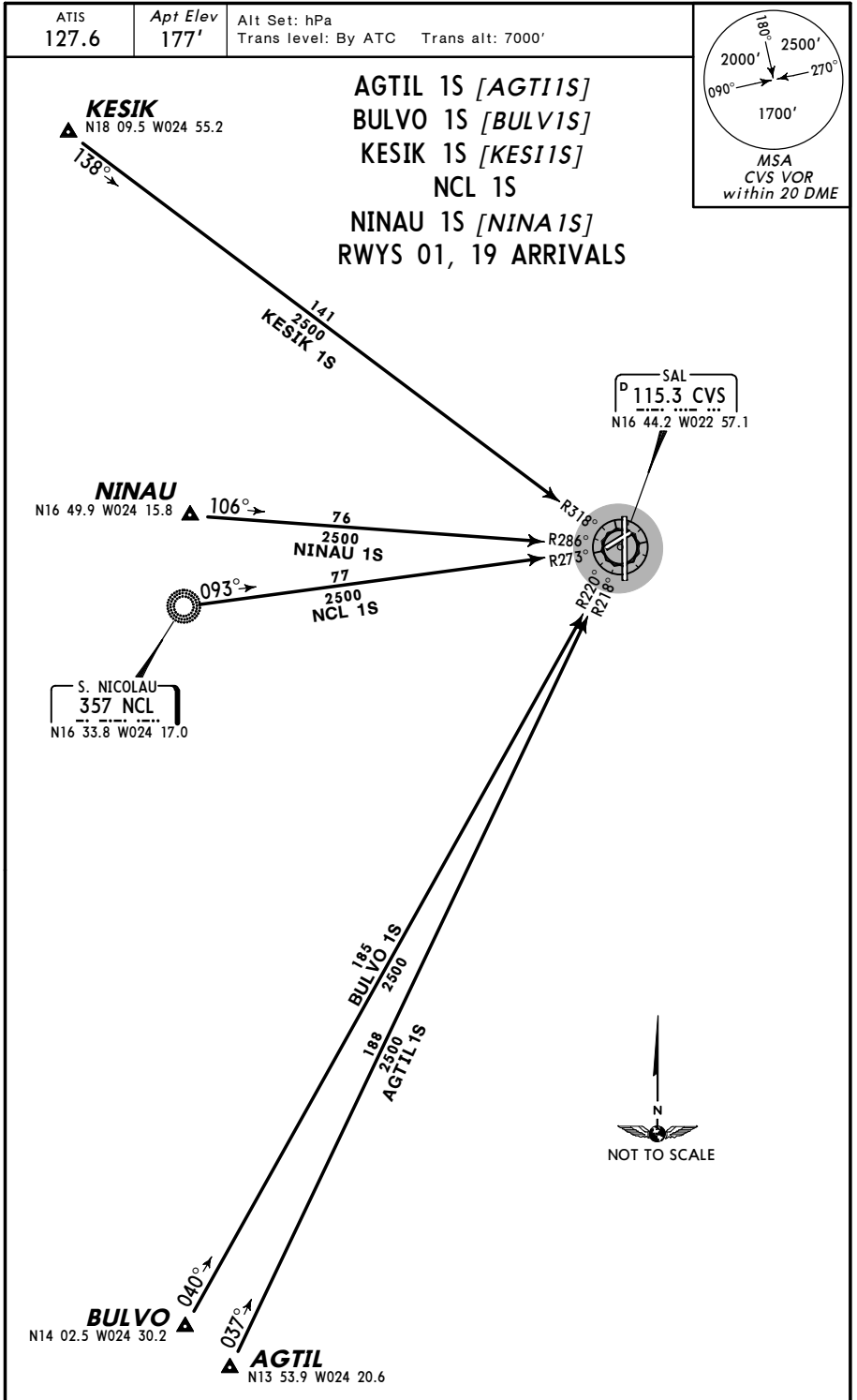
Communication Information

ATIS: 127.600
Amilcabral Tower: 119.700
Sal Approach: 126.400

GVAC/SID
AMILCAR CABRAL

JEPPESEN
 8 JAN 10 (10-2)

SAL, CAPE VERDE
STAR

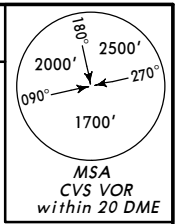


GVAC/SID
AMILCAR CABRAL

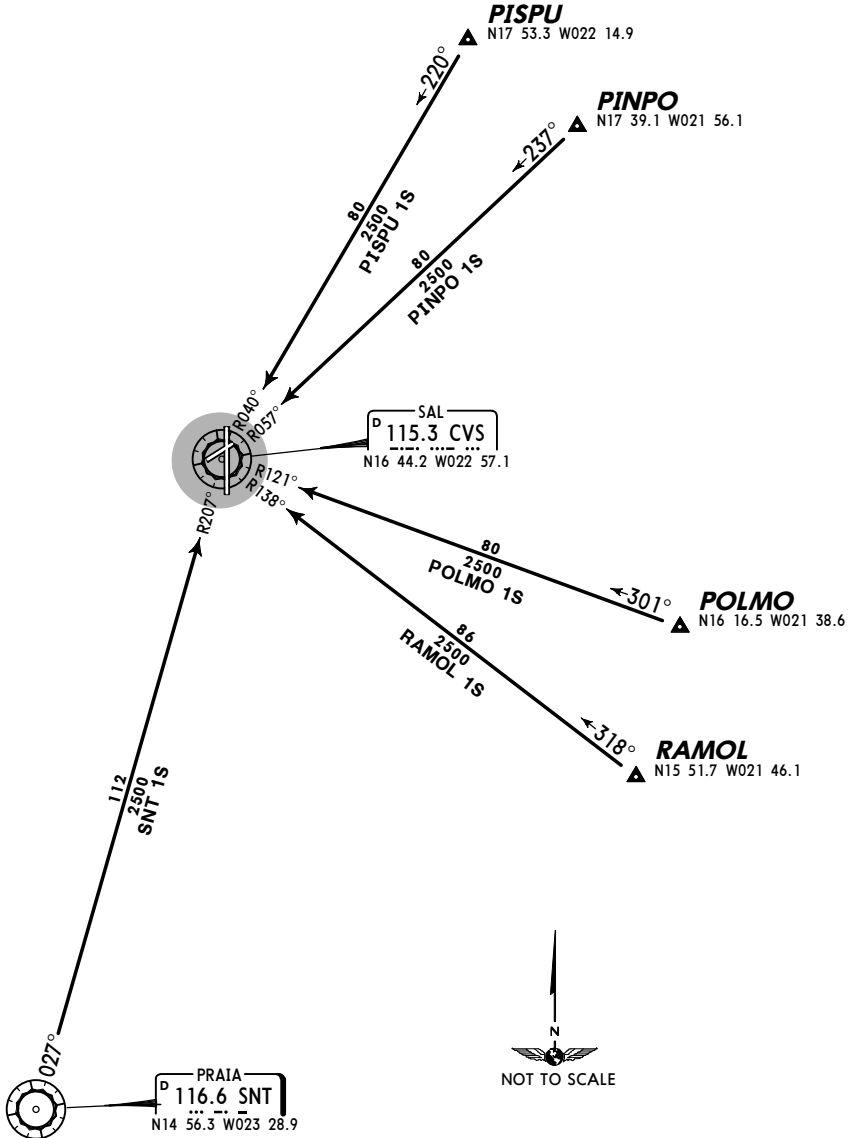
JEPPESEN
 8 JAN 10 **(10-2A)**

SAL, CAPE VERDE
STAR

ATIS 127.6	Apt Elev 177'	Alt Set: hPa Trans level: By ATC Trans alt: 7000'
----------------------	-------------------------	---



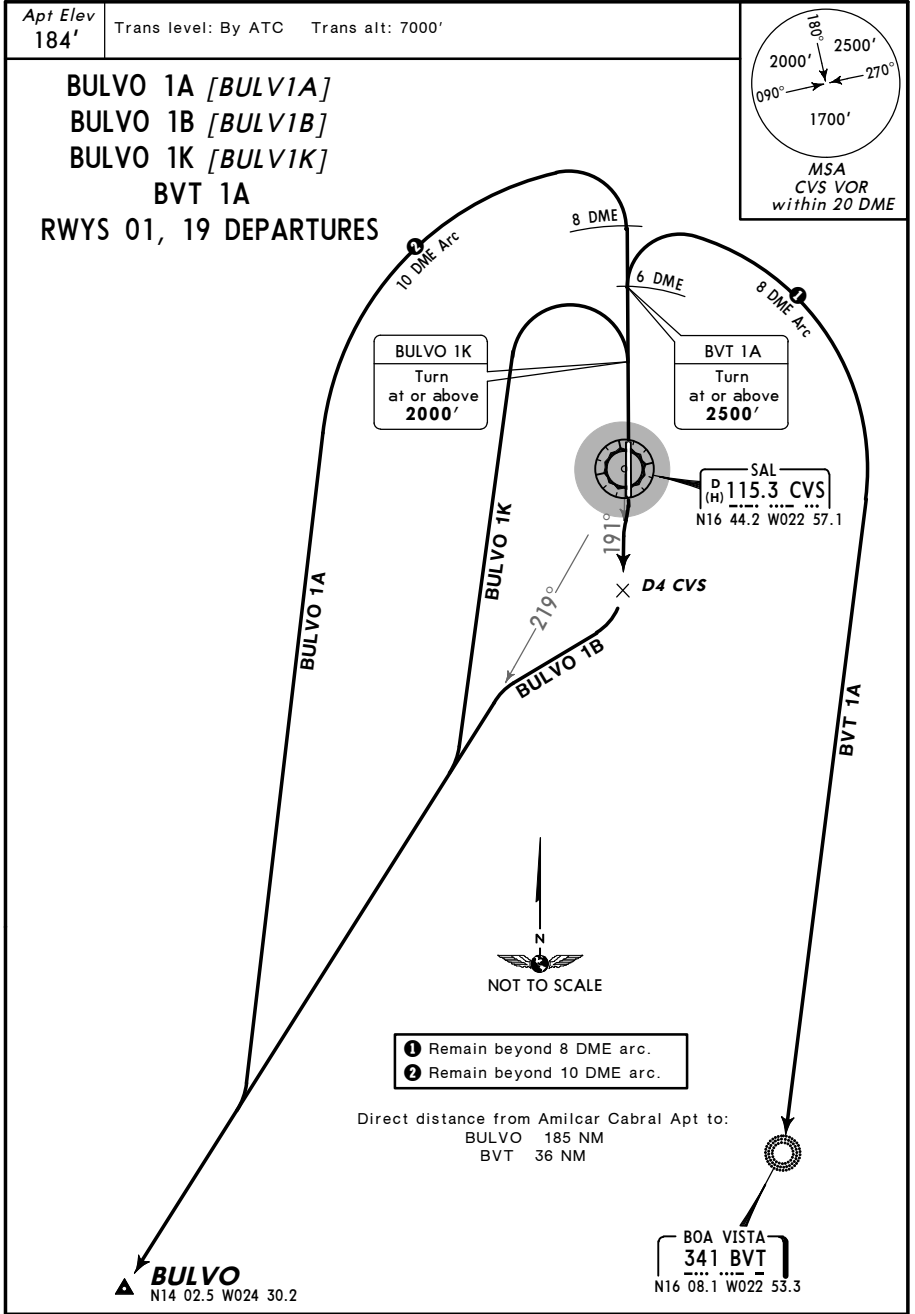
PINPO 1S [PINP1S]
PISPU 1S [PISP1S]
POLMO 1S [POLM1S]
RAMOL 1S [RAMO1S]
SNT 1S
RWYS 01, 19 ARRIVALS



GVAC/SID
AMILCAR CABRAL

JEPPESEN
 30 MAY 14 (10-3)

SAL, CAPE VERDE
SID

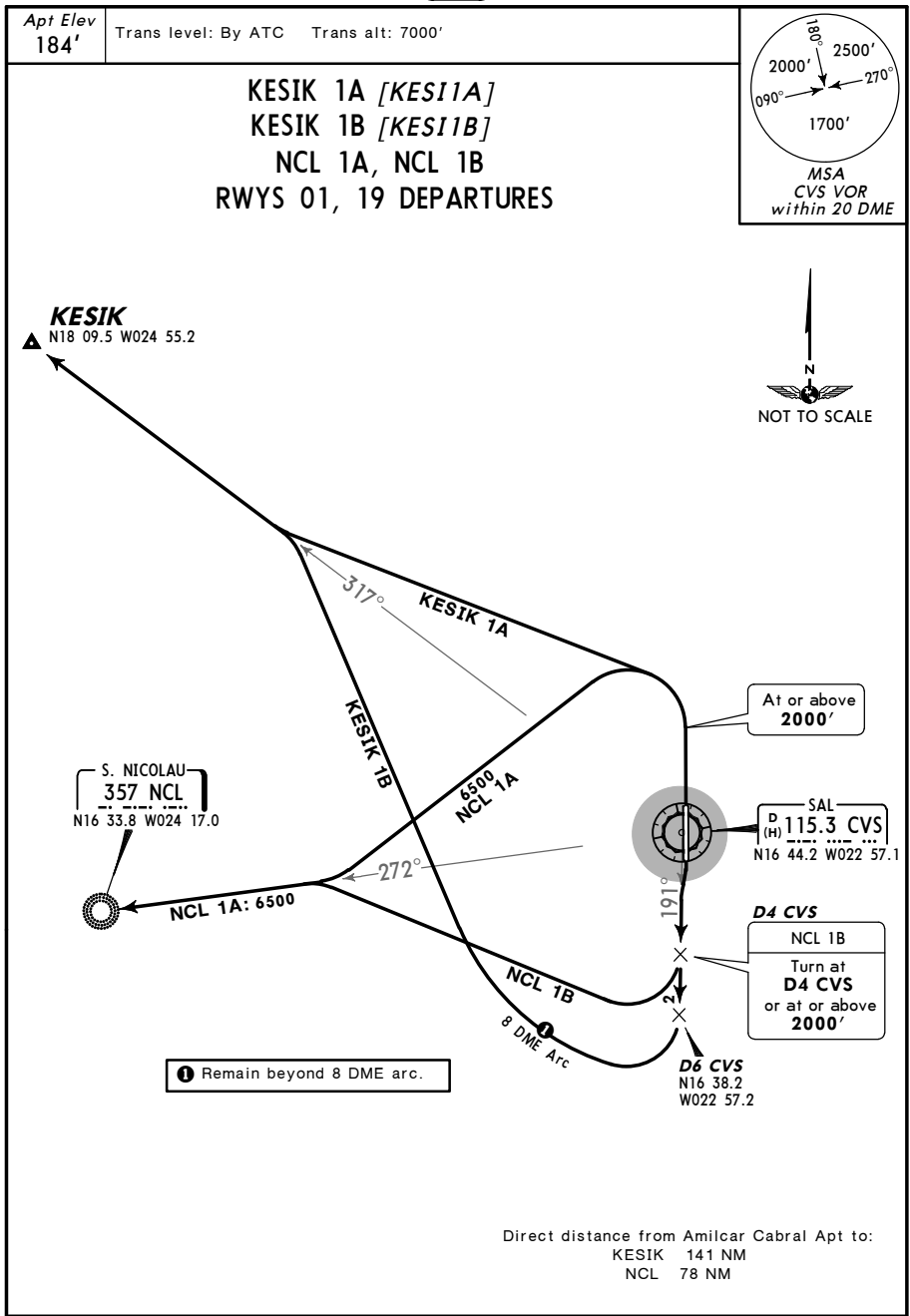


SID	RWY	ROUTING
BULVO 1A	01	Climb on runway track to CVS 8 DME, turn LEFT to BULVO following CVS R-219.
BULVO 1B	19	Intercept CVS R-191 to D4 CVS, turn RIGHT, intercept CVS R-219 to BULVO.
BULVO 1K	01	Climb on runway track to at or above 2000', turn LEFT to BULVO following CVS R-219.
BVT 1A		Climb on runway track to at or above 2500' at CVS 6 DME, turn RIGHT to BVT.

GVAC/SID
AMILCAR CABRAL

JEPPESEN
 30 MAY 14 **(10-3A)**

SAL, CAPE VERDE
SID

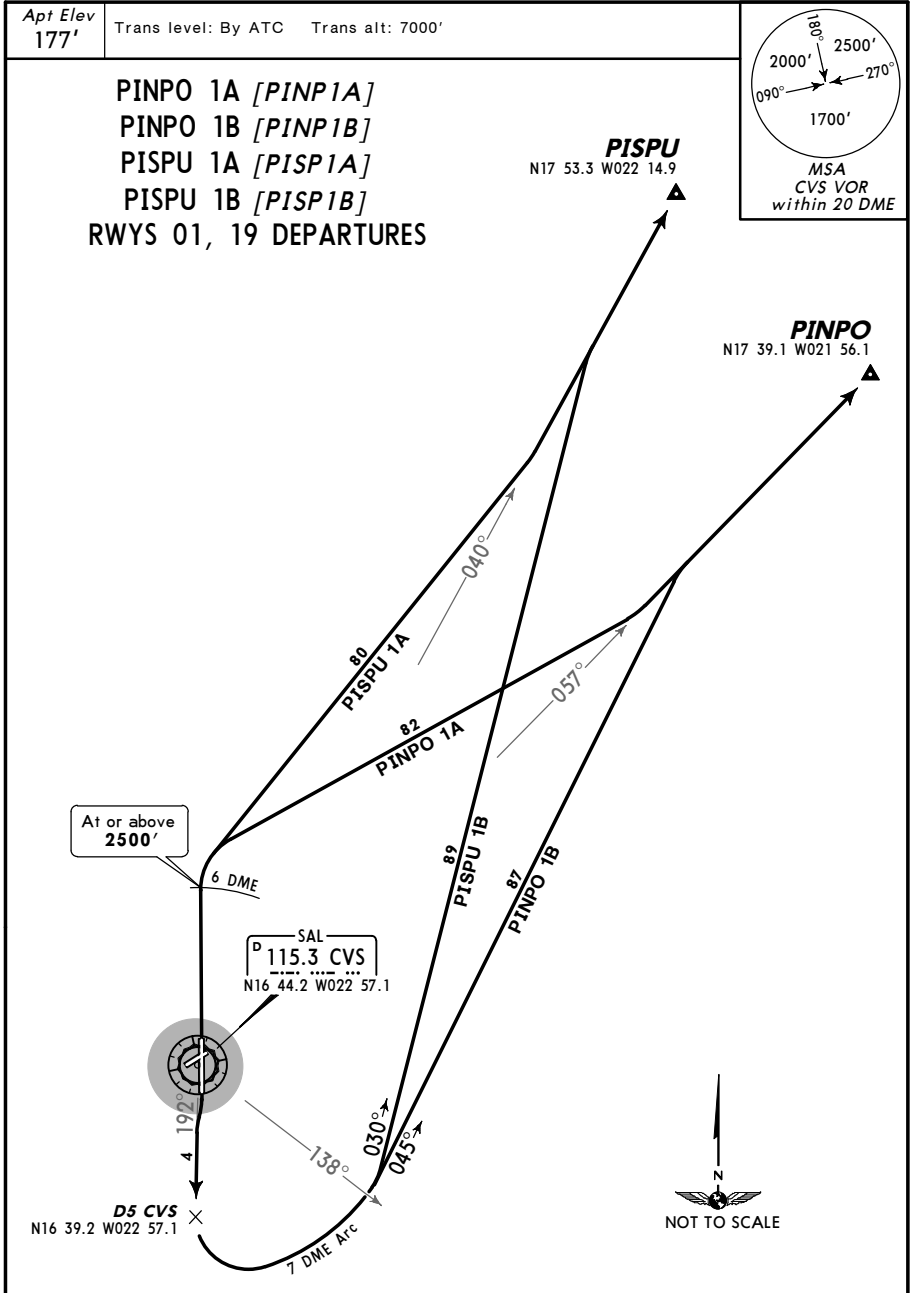


SID	RWY	ROUTING
KESIK 1A	01	Climb on runway track to at or above 2000', turn LEFT to KESIK following CVS R-317.
KESIK 1B	19	Intercept CVS R-191 to D6 CVS, turn RIGHT to KESIK following CVS R-317.
NCL 1A	01	Climb on runway track to at or above 2000', turn LEFT, intercept CVS R-272 to NCL.
NCL 1B	19	Intercept CVS R-191 to D4 CVS or at or above 2000', turn RIGHT, intercept CVS R-272 to NCL.

GVAC/SID
AMILCAR CABRAL

JEPPESSEN
 5 JAN 07 **(10-3B)**

SAL, CAPE VERDE
SID



SID	RWY	ROUTING
PINPO 1A	01	Climb on runway track to at or above 2500' at CVS 6 DME, turn RIGHT to PINPO following CVS R-057.
PINPO 1B	19	Intercept CVS R-192 to D5 CVS, turn LEFT , along CVS 7 DME arc until crossing CVS R-138, 045° track, intercept CVS R-057 to PINPO.
PISPU 1A	01	Climb on runway track to at or above 2500' at CVS 6 DME, turn RIGHT to PISPU following CVS R-040.
PISPU 1B	19	Intercept CVS R-192 to D5 CVS, turn LEFT , along CVS 7 DME arc until crossing CVS R-138, 030° track, intercept CVS R-040 to PISPU.

GVAC/SID
AMILCAR CABRAL



5 JAN 07 (10-3C)

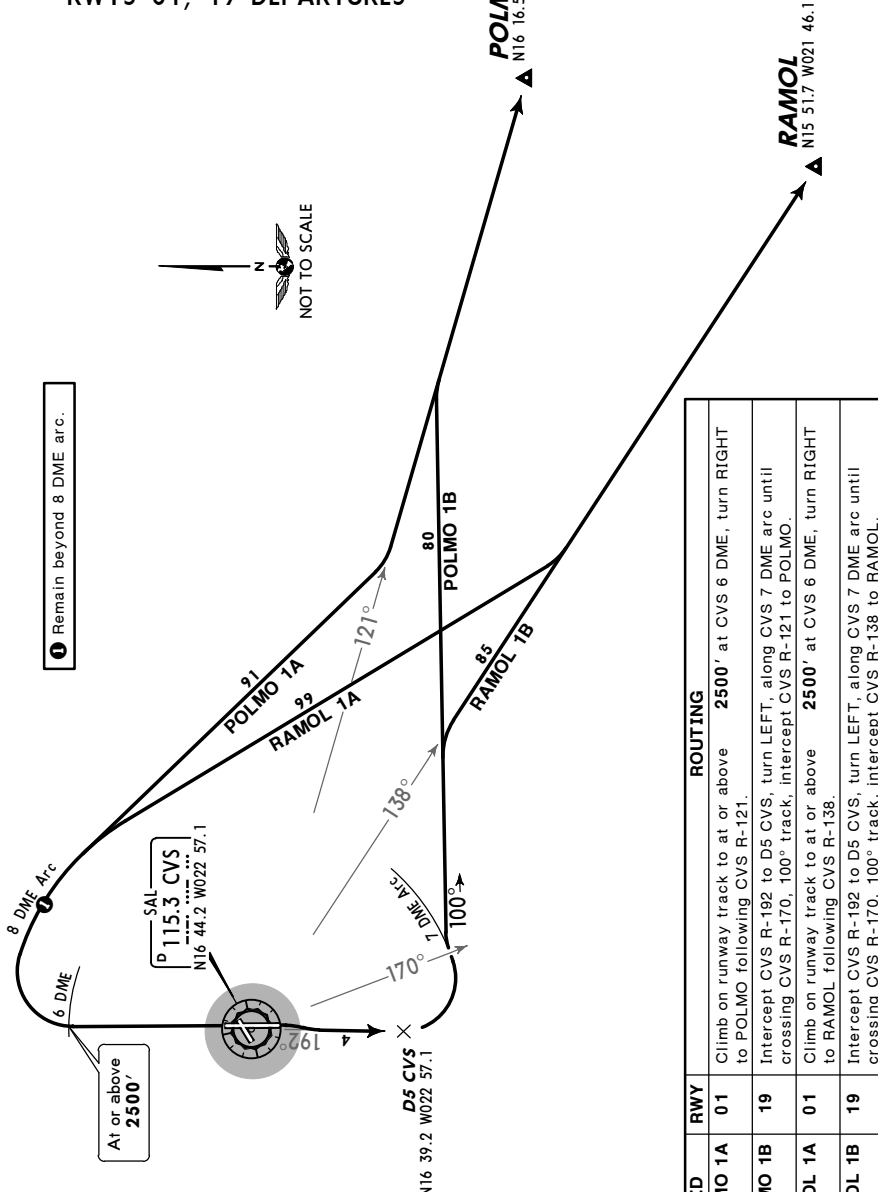
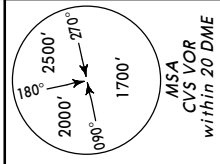
SAL, CAPE VERDE

SID

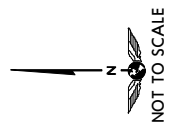
Apt Elev
177'

Trans level: By ATC Trans alt: 7000'

POLMO 1A [POLM1A]
POLMO 1B [POLM1B]
RAMOL 1A [RAMO1A]
RAMOL 1B [RAMO1B]
RWYS 01, 19 DEPARTURES



1 Remain beyond 8 DME arc.

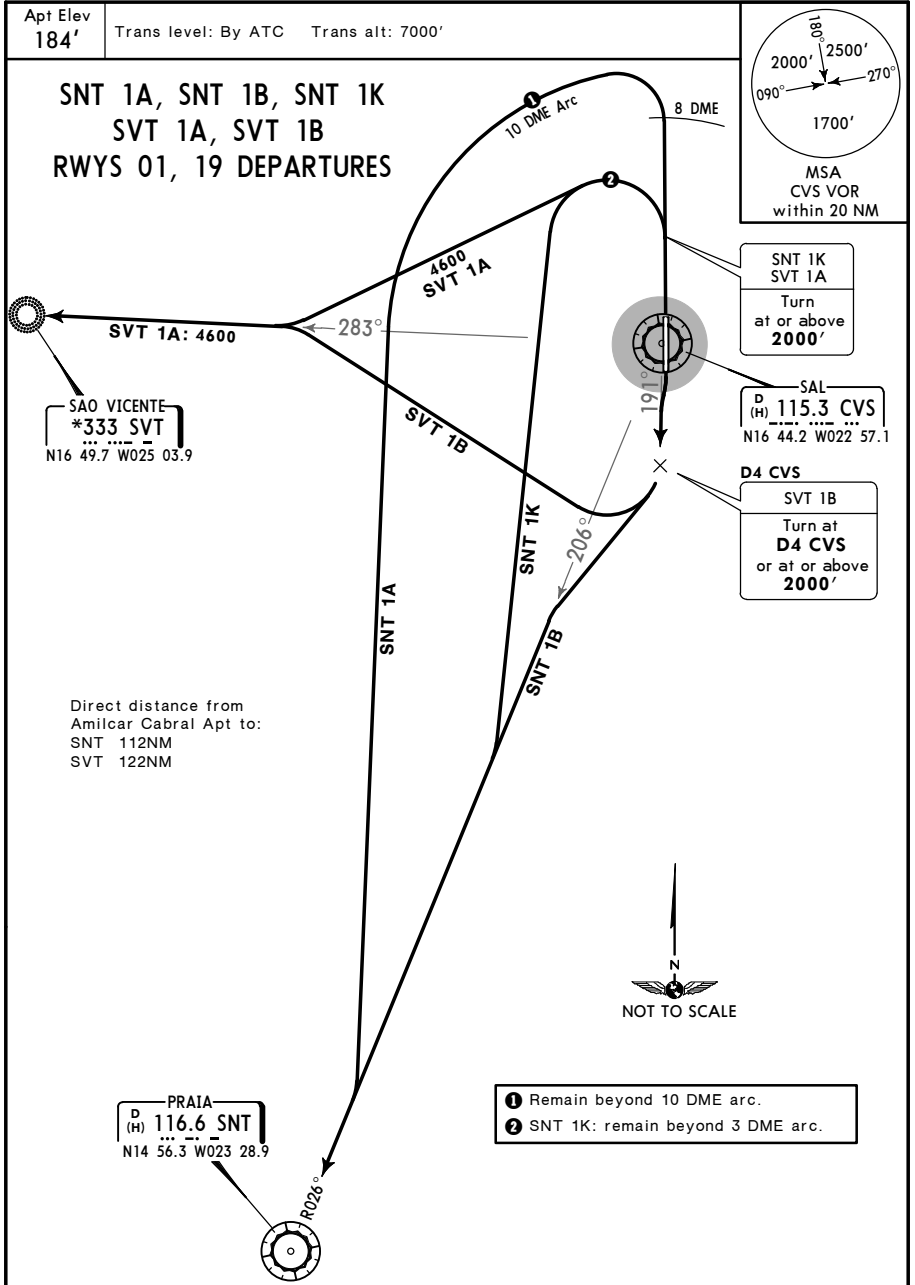


SID	RWY	ROUTING
POLMO 1A	01	Climb on runway track to at or above 2500' at CVS 6 DME, turn RIGHT to POLMO following CVS R-121.
POLMO 1B	19	Intercept CVS R-192 to D5 CVS; turn LEFT, along CVS 7 DME arc until crossing CVS R-170, 100° track; intercept CVS R-121 to POLMO.
RAMOL 1A	01	Climb on runway track to at or above 2500' at CVS 6 DME, turn RIGHT to RAMOL following CVS R-138.
RAMOL 1B	19	Intercept CVS R-192 to D5 CVS; turn LEFT, along CVS 7 DME arc until crossing CVS R-170, 100° track; intercept CVS R-138 to RAMOL.

GVAC/SID
AMILCAR CABRAL

JEPPESEN
 23 OCT 15 **(10-3D)**

SAL, CAPE VERDE
SID

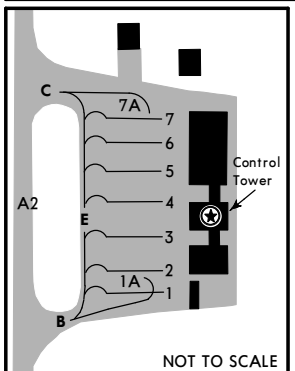
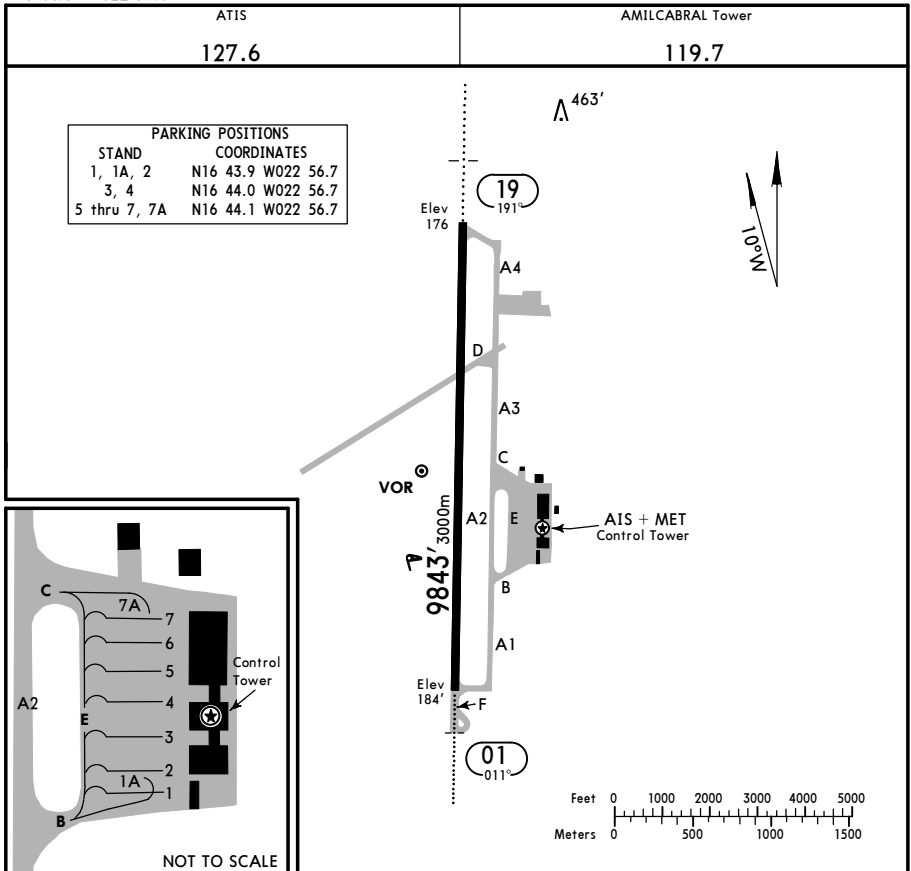


SID	RWY	ROUTING
SNT 1A	01	Climb on runway track to CVS 8 DME, turn LEFT, intercept CVS R-206 to SNT.
SNT 1B	19	Intercept CVS R-191 to D4 CVS, turn RIGHT, intercept CVS R-206 to SNT.
SNT 1K	01	Climb on runway track to at or above 2000', turn LEFT, intercept CVS R-206 to SNT.
SVT 1A		Climb on runway track to at or above 2000', turn LEFT, intercept CVS R-283 to SVT.
SVT 1B	19	Intercept CVS R-191 to D4 CVS or at or above 2000', turn RIGHT, intercept CVS R-283 to SVT.

GVAC/SID
 Apt Elev **184'**
 N16 44.3 W022 57.0

JEPPesen
 18 AUG 17 **(10-9)**

SAL, CAPE VERDE
AMILCAR CABRAL



ADDITIONAL RUNWAY INFORMATION

RWY	19	LANDING BEYOND					USABLE LENGTHS	TAKE-OFF	WIDTH
		HIRL (30m)	CL (15m)	HIALS	TDZ	PAPI-L (3.0°)			
							8810' 2685m		148' 45m

TAKE-OFF

AIR CARRIER (JAA) Rwys 01, 19				AIR CARRIER (FAR 121) Rwys 01, 19	
LVP must be in force				Adequate Vis Ref	
RL & CL	RCLM (DAY only) or RL	RCLM (DAY only) or RL			
A	200m	250m	400m	2 Eng	VIS 400m
B				3 & 4 Eng	
C					
D	250m	300m			

CHANGES: Rwy bearings.

GVAC/SID



Standard
SAL, CAPE VERDE
 AMILCAR CABRAL

STRAIGHT-IN RWY		A	B	C	D
01	VOR or NDB ILS	386' (202')	386' (202')	386' (202')	386' (202')
	FULL	R550m	R550m	R550m	R550m
	TDZ or CL out	① R550m	① R550m	① R550m	① R550m
	ALS out	R1200m	R1200m	R1200m	R1200m
	② LOC	540' (356')	540' (356')	540' (356')	540' (356')
		R900m	R900m	R900m	R900m
	ALS out	R1500m	R1500m	R1600m	R1600m
	② VOR	540' (355')	540' (355')	540' (355')	540' (355')
		R900m	R900m	R900m	R900m
	ALS out	R1500m	R1500m	R1600m	R1600m
	② NDB	550' (365')	550' (365')	550' (365')	550' (365')
		R1000m	R1000m	R1200m	R1200m
ALS out	R1700m	R1700m	R1700m	R1700m	
	NDB	550' (365')	550' (365')	550' (365')	550' (365')
		R1200m	R1200m	R1400m	R1400m
ALS out	R1900m	R1900m	R2100m	R2100m	
19	② VOR	720' (542')	720' (542')	720' (542')	720' (542')
		R1500m	R1500m	R1800m	R1800m
	ALS out	R1500m	R1500m	R2400m	R2400m

- ① W/o HUD/AP/FD: RVR 750m.
- ② Continuous Descent Final Approach.

CIRCLE-TO-LAND	100 KT	135 KT	180 KT	205 KT
West of rwy	750' (566')	750' (566')	1280' (1096')	1280' (1096')
East of rwy	750' (566')	890' (706')	1380' (1196')	1750' (1566')
	V1500m ③	V1600m ③	V2400m	V3600m

③ or higher minimums of preceding straight-in approach.

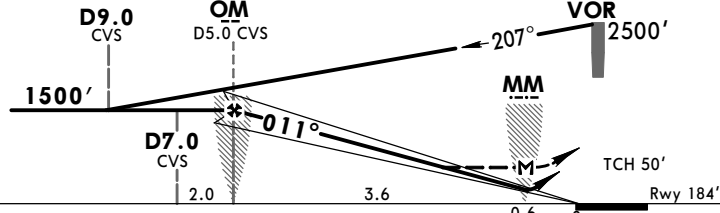
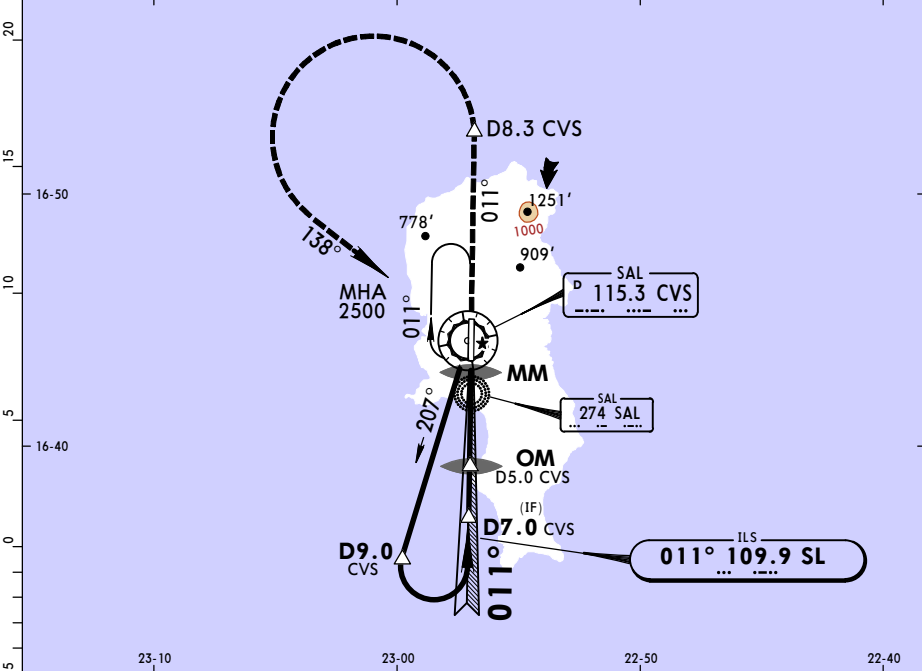
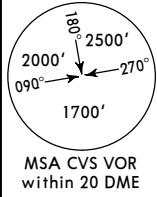
TAKE-OFF						
Low Visibility Take-off						
	HIRL, CL & relevant RVR	RL, CL & relevant RVR	RL & CL	Day: RL & RCLM Night: RL or CL	Day: RL or RCLM Night: RL or CL	Adequate vis ref (Day only)
A						
B	TDZ, MID, RO	TDZ, MID, RO				
C	RVR 125m	RVR 150m	RVR 200m	RVR 300m	400m	500m
D						

GVAC/SID
AMILCAR CABRAL

JEPPESSEN
18 AUG 17 (11-1)

SAL, CAPE VERDE
VOR ILS Rwy 01

ATIS 127.6		SAL Approach (R) 126.4		AMILCABRAL Tower 119.7	
LOC SL 109.9	Final Apch Crs 011°	GS OM 1500' (1316')	ILS DA(H) 386' (202')	Apt Elev 184' Rwy 184'	
MISSED APCH: Climb to 2500', maintain rwy heading to D8.3 CVS, then turn LEFT back to VOR.					
Alt Set: hPa		Rwy Elev: 7 hPa		Trans level: By ATC	
				Trans alt: 7000'	



Gnd speed-Kts	70	90	100	120	140	160	HIALS PAPI 2500' on RWY hdg D8.3 CVS
ILS GS or LOC Descent angle	372	478	531	637	743	849	
MAP at MM							

STRAIGHT-IN LANDING RWY 01						CIRCLE-TO-LAND			
ILS			LOC (GS out)			West of rwy		East of rwy	
DA(H) 386' (202')			MDA(H) 540' (356')			West of rwy		East of rwy	
FULL	TDZ or CL out	ALS out	MM out	ALS out	Max Kts	MDA(H)		MDA(H)	
A					100	750' (566') 1600m		750' (566') 1600m	
B			800m	1600m	135	750' (566') 1600m		890' (706') 1600m	
C	800m	1200m	NOT AUTH		180	1280' (1096') 4800m		1380' (1196') 4800m	
D				1200m	2000m	205	1280' (1096') 4800m		1750' (1566') 4800m

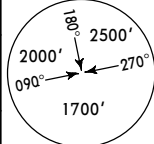
PANS OPS

GVAC/SID
AMILCAR CABRAL

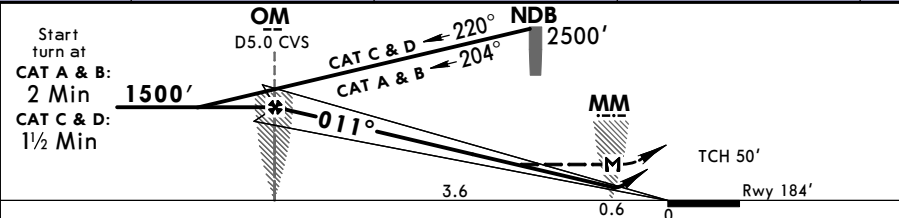
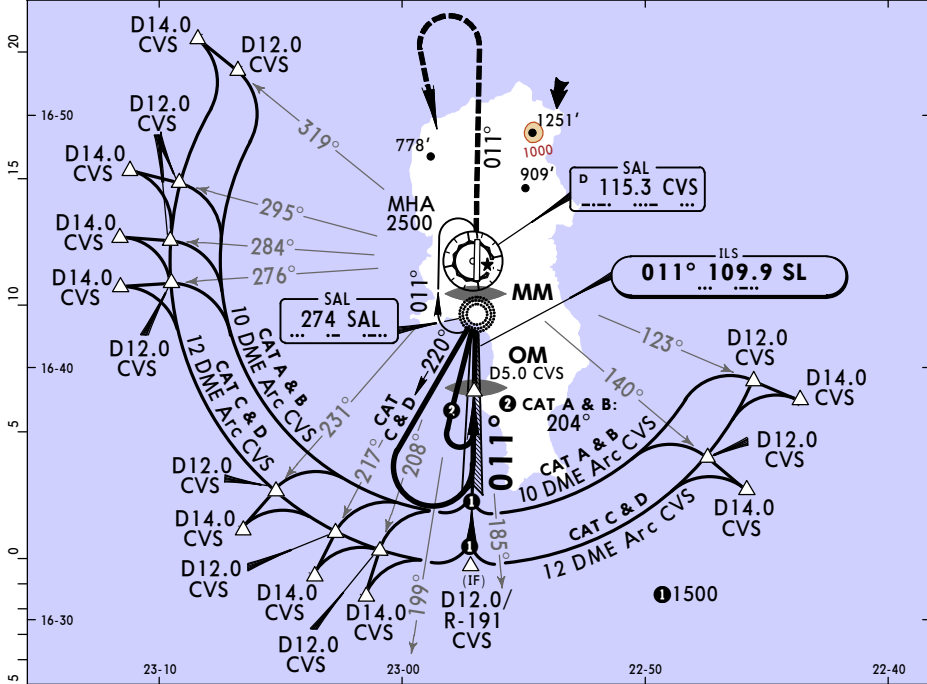
JEPPESSEN
18 AUG 17 **(11-2)**

SAL, CAPE VERDE
NDB ILS Rwy 01

BRIEFING STRIP™	ATIS 127.6		SAL Approach (R) 126.4		AMILCABRAL Tower 119.7	
	LOC SL 109.9	Final ApcH Crs 011°	GS OM 1500' (1316')	ILS DA(H) 386' (202')	Apt Elev 184' Rwy 184'	
	MISSED APCH: Climb on track 011° to 2500', then turn LEFT to NDB holding. Contact ATC. Climb to 1500' prior to level acceleration.					
Alt Set: hPa		Rwy Elev: 7 hPa	Trans level: By ATC		Trans alt: 7000'	



MSA CVS VOR within 20 DME



Gnd speed-Kts	70	90	100	120	140	160		2500' on 011°	
ILS GS or LOC Descent angle	3.00°	372	478	531	637	743			849
MAP at MM									

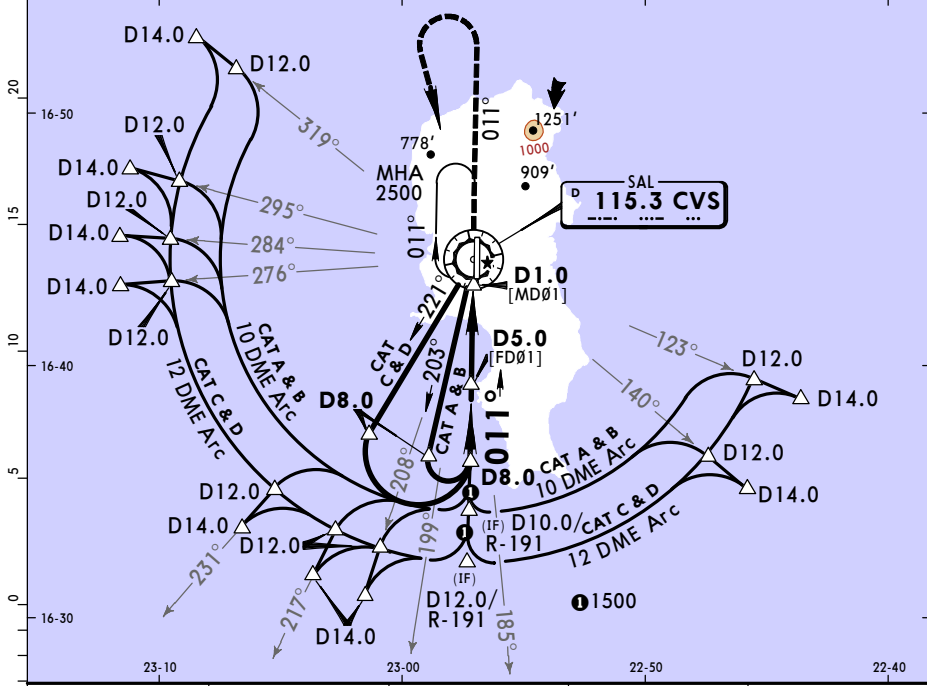
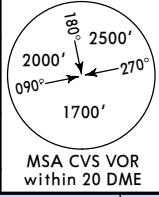
PANS OPS	STRAIGHT-IN LANDING RWY 01						CIRCLE-TO-LAND			
	ILS			LOC (GS out)			West of rwy		East of rwy	
	DA(H)	386' (202')		MDA(H)	540' (356')		MDA(H)		MDA(H)	
A	FULL	TDZ or CL out	ALS out		MM out	ALS out	Max Kts			
B				800m	NOT AUTH	1600m	100	750' (566')	1600m	750' (566')
C		800m	1200m				135			890' (706')
D				1200m		2000m	180	1280' (1096')	4800m	1380' (1196')
							205			1750' (1566')

GVAC/SID
AMILCAR CABRAL

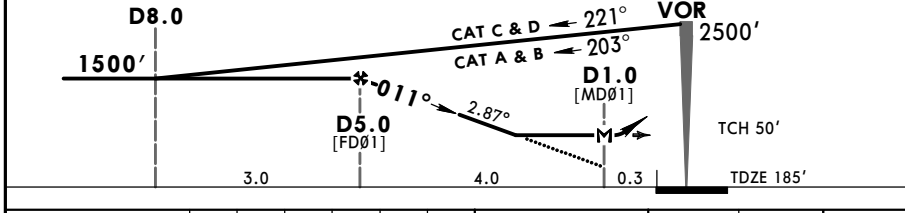
JEPPESN
18 AUG 17 **(13-1)**

SAL, CAPE VERDE
VOR DME Rwy 01

ATIS 127.6		SAL Approach (R) 126.4		AMILCABRAL Tower 119.7	
VOR CVS 115.3	Final Apc Crs 011°	Minimum Alt D5.0 1500' (1315')	MDA(H) 540' (355')	Apt Elev 184' TDZE 185'	
MISSED APCH: Climb on track 011° to 2500', then turn LEFT to VOR holding. Contact ATC. Climb to 1500' prior to level acceleration.					
Alt Set: hPa		TDZ Elev: 7 hPa	Trans level: By ATC	Trans alt: 7000'	



CVS DME	5.0	4.0	3.0	2.0
ALTITUDE	1500'	1200'	900'	600'



Gnd speed-Kts	70	90	100	120	140	160	HIALS PAPI	2500' on 011°
Descent angle	2.87°	355	457	508	609	711		
MAP at D1.0								

STRAIGHT-IN LANDING RWY 01			CIRCLE-TO-LAND		
MDA(H) 540' (355')			West of rwy		East of rwy
	ALS out		Max Kts	MDA(H)	MDA(H)
A			100	750' (566') 1600m	750' (566') 1600m
B	800m	1600m	135		890' (706') 1600m
C			180	1280' (1096') 4800m	1380' (1196') 4800m
D	1600m	2000m	205		1750' (1566') 4800m

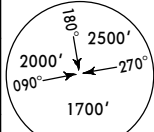
PANS OPS

GVAC/SID
AMILCAR CABRAL

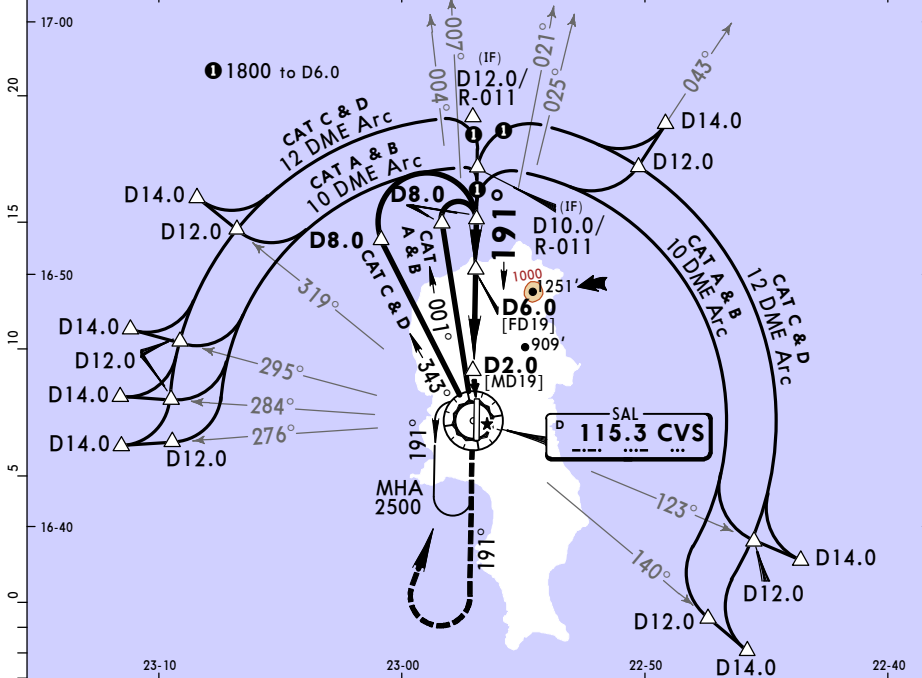
JEPPESON
18 AUG 17 **(13-2)**

SAL, CAPE VERDE
VOR DME Rwy 19

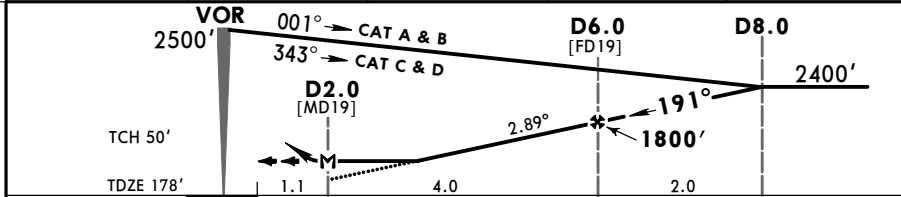
ATIS 127.6		SAL Approach (R) 126.4		AMILCABRAL Tower 119.7	
VOR CVS 115.3	Final Apc Crs 191°	Minimum Alt D6.0 1800' (1622')	MDA(H) 720' (542')	Apt Elev 184' TDZE 178'	
MISSED APCH: Climb on track 191° to 2500', then turn RIGHT to VOR holding. Contact ATC. Climb to 1500' prior to level acceleration.					
Alt Set: hPa		TDZ Elev: 7 hPa		Trans level: By ATC	
				Trans alt: 7000'	



MSA CVS VOR within 20 DME



CVS DME	3.0	4.0	5.0	6.0
ALTITUDE	900'	1200'	1500'	1800'



Gnd speed-Kts	70	90	100	120	140	160	HIALS PAPI	2500' ↑ 191°	
Descent Angle	2.89°	358	460	511	613	716			818
MAP at D2.0									

STRAIGHT-IN LANDING RWY 19				CIRCLE-TO-LAND				
MDA(H) 720' (542')				West of rwy		East of rwy		
ALS out				Max Kts	MDA(H)		MDA(H)	
A				100			750' (566') 1600m	
B	1200m	2000m		135			890' (706') 1600m	
C	1600m	2400m		180			1380' (1196') 4800m	
D	2000m	2800m		205			1750' (1566') 4800m	

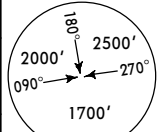
PANS OPS

GVAC/SID
AMILCAR CABRAL

JEPPESEN
18 AUG 17 **(16-1)**

SAL, CAPE VERDE
NDB Rwy 01

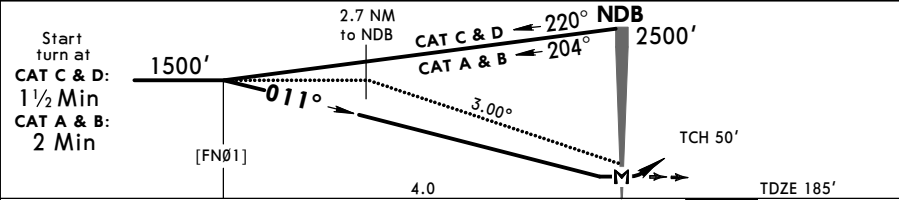
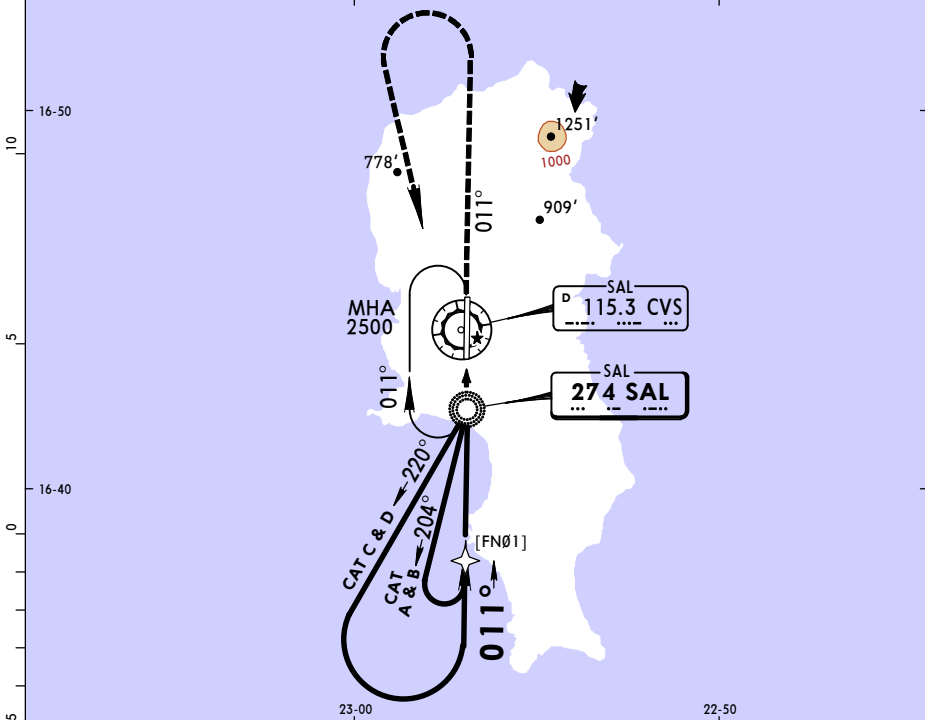
ATIS 127.6		SAL Approach (R) 126.4		AMILCABRAL Tower 119.7	
NDB SAL 274	Final Apth Crs 011°	Minimum Alt No FAF	MDA(H) 550' (365')	Apt Elev 184' TDZE 185'	



MISSED APCH: Climb on track 011° to 2500', then turn LEFT to NDB holding. Contact ATC. Climb to 1500' prior to level acceleration.

Alt Set: hPa TDZ Elev: 7 hPa Trans level: By ATC Trans alt: 7000'

MSA CVS VOR within 20 DME



Gnd Speed-Kts	70	90	100	120	140	160		2500' on 011°	
Descent angle	3.00°	372	478	531	637	743			849
MAP at NDB									

STRAIGHT-IN LANDING RWY 01			CIRCLE-TO-LAND	
MDA(H) 550' (365')			West of rwy	East of rwy
		ALS out	Max Kts	MDA(H)
A			100	750' (566') 2400m
B	1600m		135	890' (706') 2400m
C		2400m	180	1380' (1196') 4800m
D	2000m		205	1750' (1566') 4800m

PANS OPS