

## General Information

Location: PRAIA CPV  
ICAO/IATA: GVNP / RAI  
Lat/Long: N14° 56.47', W023° 29.08'  
Elevation: 324 ft

Airport Use: Public  
Daylight Savings: Not Observed  
UTC Conversion: +1:00 = UTC  
Magnetic Variation: 11.0° W

Fuel Types: Jet A-1  
Customs: Yes  
Airport Type: IFR  
Landing Fee: Yes  
Control Tower: Yes  
Jet Start Unit: No  
LLWS Alert: No  
Beacon: Yes

Sunrise: 0804 Z  
Sunset: 1930 Z

## Runway Information

Runway: 03  
Length x Width: 6890 ft x 148 ft  
Surface Type: asphalt  
TDZ-Elev: 315 ft  
Lighting: Edge, ALS  
Displaced Threshold: 656 ft

Runway: 21  
Length x Width: 6890 ft x 148 ft  
Surface Type: asphalt  
TDZ-Elev: 324 ft  
Lighting: Edge, ALS

## Communication Information

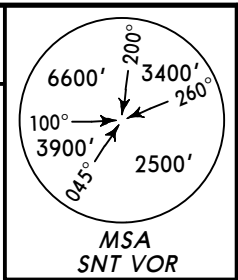
ATIS: 127.700  
Praia Tower: 118.200

**GVNP/RAI**  
**PRAIA INTL**

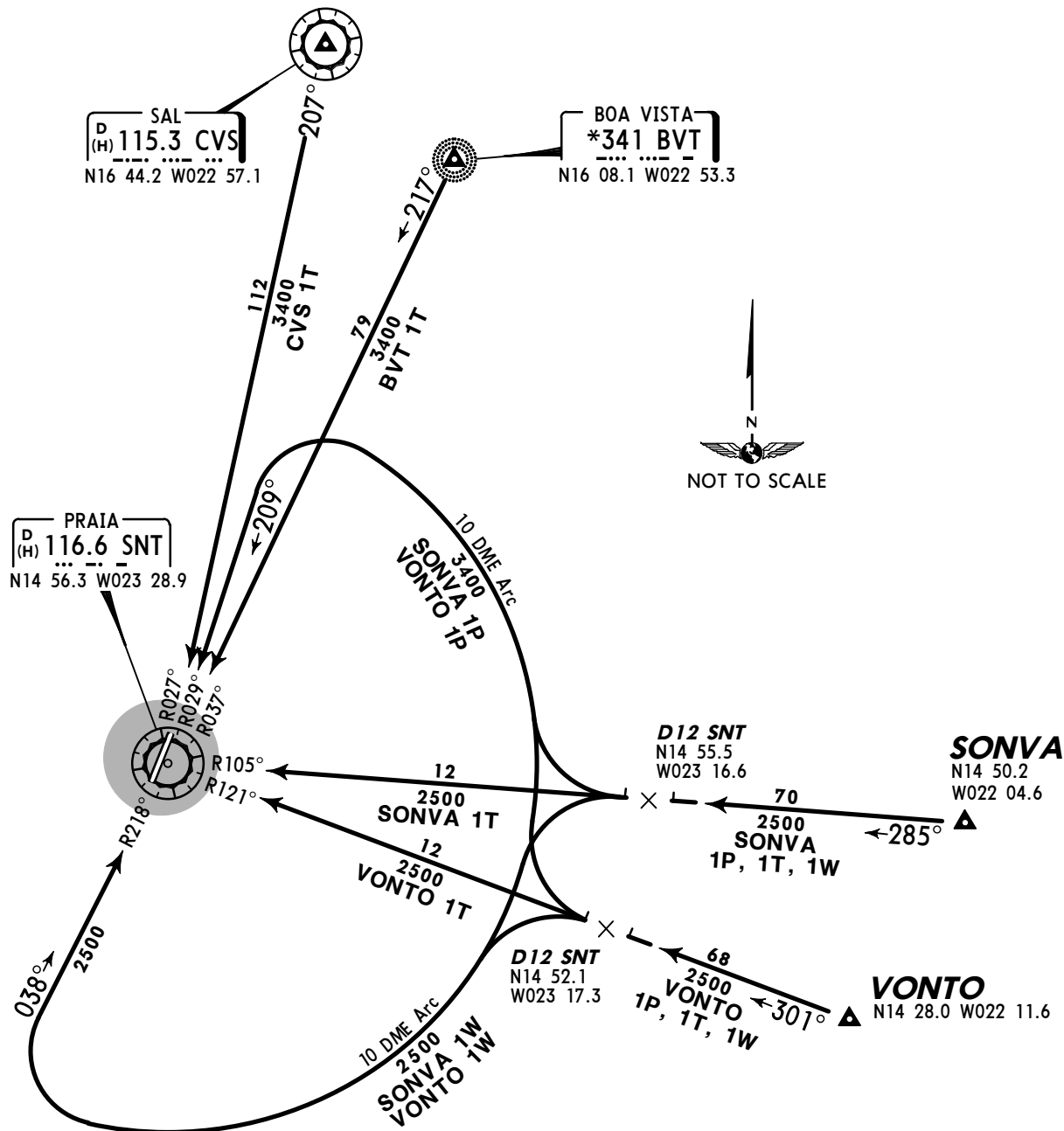
**JEPPESSEN**  
 9 NOV 12 **10-2**

**PRAIA, CAPE VERDE**  
**STAR**

ATIS 127.7 Apt Elev 324' Alt Set: hPa Trans level: By ATC Trans alt: 7000'



**BVT 1T, CVS 1T**  
**SONVA 1P [SONV1P], SONVA 1T [SONV1T]**  
**SONVA 1W [SONV1W], VONTO 1P [VONT1P]**  
**VONTO 1T [VONT1T], VONTO 1W [VONT1W]**  
**RWYS 03, 21 ARRIVALS**



| STAR            | ROUTING   |
|-----------------|---|
| <b>BVT 1T</b>   | On SNT R-037 inbound to SNT.  |
| <b>CVS 1T</b>   | On SNT R-027 inbound to SNT.  |
| <b>SONVA 1P</b> | On SNT R-105 inbound to D12 SNT, turn RIGHT, along SNT 10 DME Arc, turn LEFT, intercept SNT R-029 inbound to SNT. |
| <b>SONVA 1T</b> | On SNT R-105 inbound to SNT.  |
| <b>SONVA 1W</b> | On SNT R-105 inbound to D12 SNT, turn LEFT, along SNT 10 DME Arc, turn RIGHT, intercept SNT R-218 inbound to SNT. |
| <b>VONTO 1P</b> | On SNT R-121 inbound to D12 SNT, turn RIGHT, along SNT 10 DME Arc, turn LEFT, intercept SNT R-029 inbound to SNT. |
| <b>VONTO 1T</b> | On SNT R-121 inbound to SNT.  |
| <b>VONTO 1W</b> | On SNT R-121 inbound to D12 SNT, turn LEFT, along SNT 10 DME Arc, turn RIGHT, intercept SNT R-218 inbound to SNT. |

CHANGES: MSA & MEA.

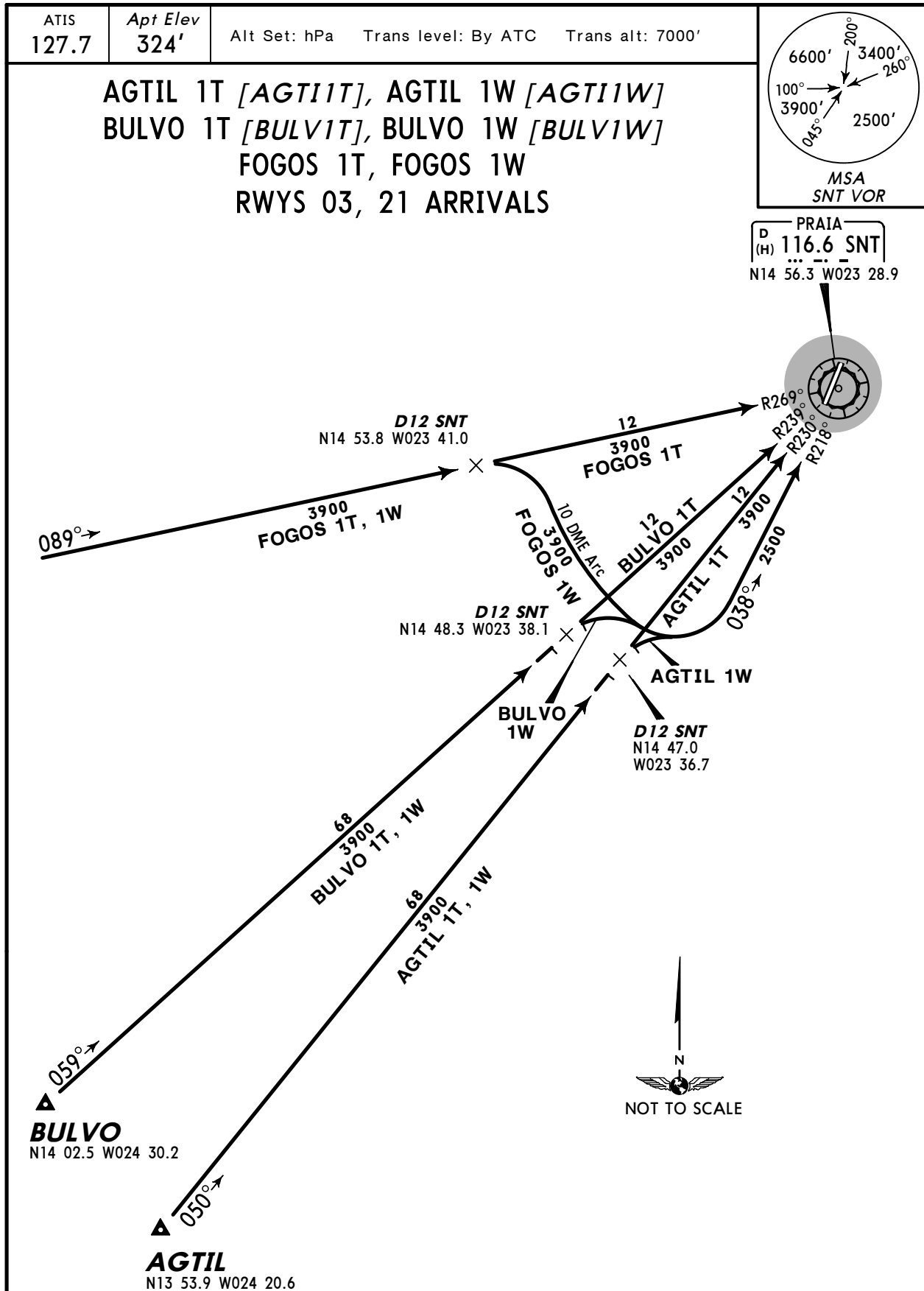
© JEPPESSEN, 2007, 2012. ALL RIGHTS RESERVED.

GVNP/RAI  
PRAIA INTL

JEPPESSEN  
9 NOV 12 (10-2A)

PRAIA, CAPE VERDE

STAR



| STAR            | ROUTING   |
|-----------------|---|
| <b>AGTIL 1T</b> | On SNT R-230 inbound to SNT.  |
| <b>AGTIL 1W</b> | On SNT R-230 inbound to D12 SNT, turn RIGHT, intercept SNT R-218 inbound to SNT.                                  |
| <b>BULVO 1T</b> | On SNT R-239 inbound to SNT.  |
| <b>BULVO 1W</b> | On SNT R-239 inbound to D12 SNT, turn RIGHT, intercept SNT R-218 inbound to SNT.                                  |
| <b>FOGOS 1T</b> | On SNT R-269 inbound to SNT.  |
| <b>FOGOS 1W</b> | On SNT R-269 inbound to D12 SNT, turn RIGHT, along SNT 10 DME Arc, turn LEFT, intercept SNT R-218 inbound to SNT. |

CHANGES: MSA & MEA.

GVNP/RAI  
PRAIA INTL

JEPPESSEN  
9 NOV 12 (10-2B)

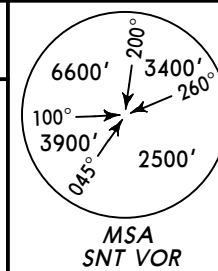
PRAIA, CAPE VERDE

STAR

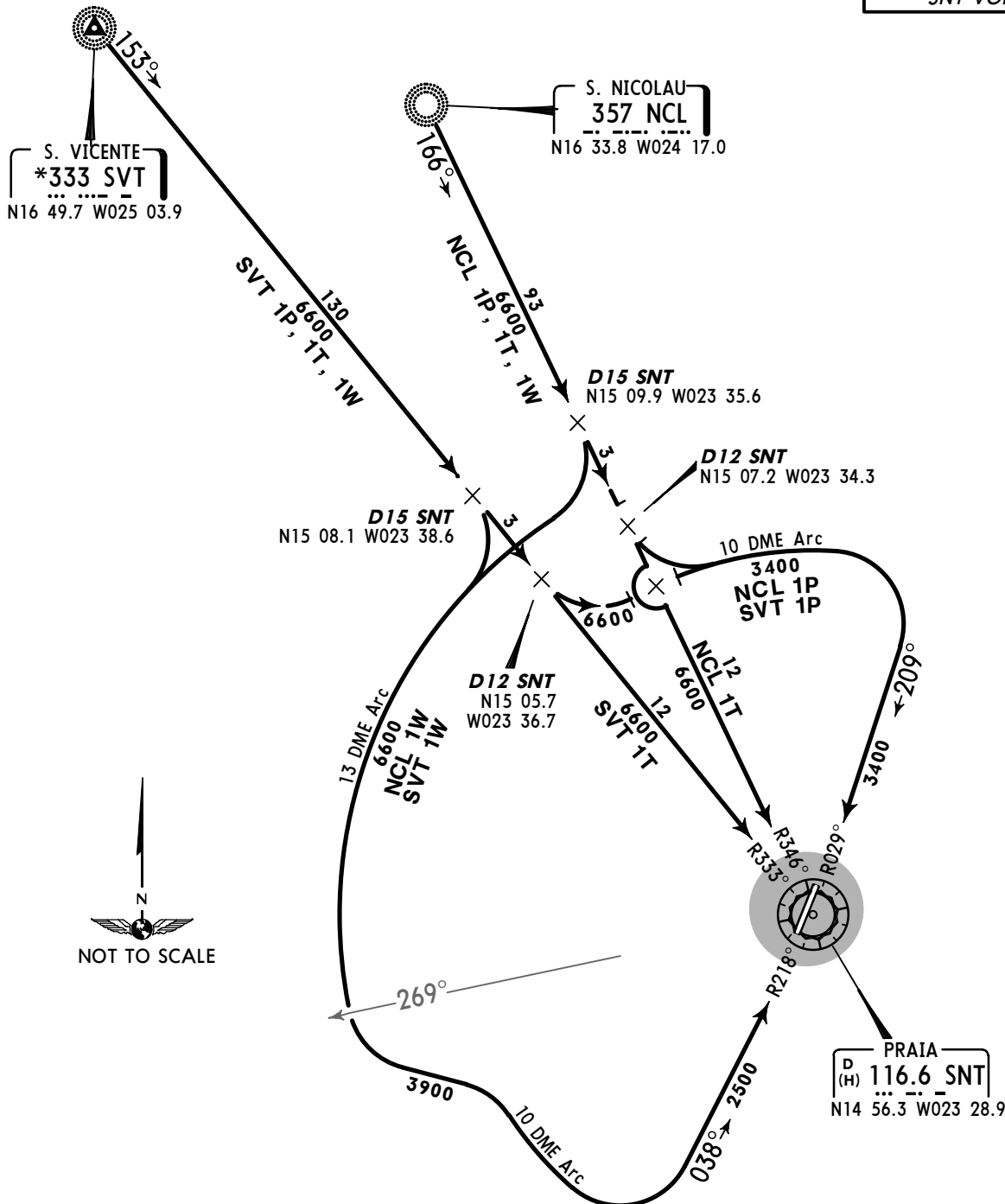
ATIS  
127.7

Apt Elev  
324'

Alt Set: hPa Trans level: By ATC Trans alt: 7000'



NCL 1P, NCL 1T, NCL 1W  
SVT 1P, SVT 1T, SVT 1W  
RWYS 03, 21 ARRIVALS

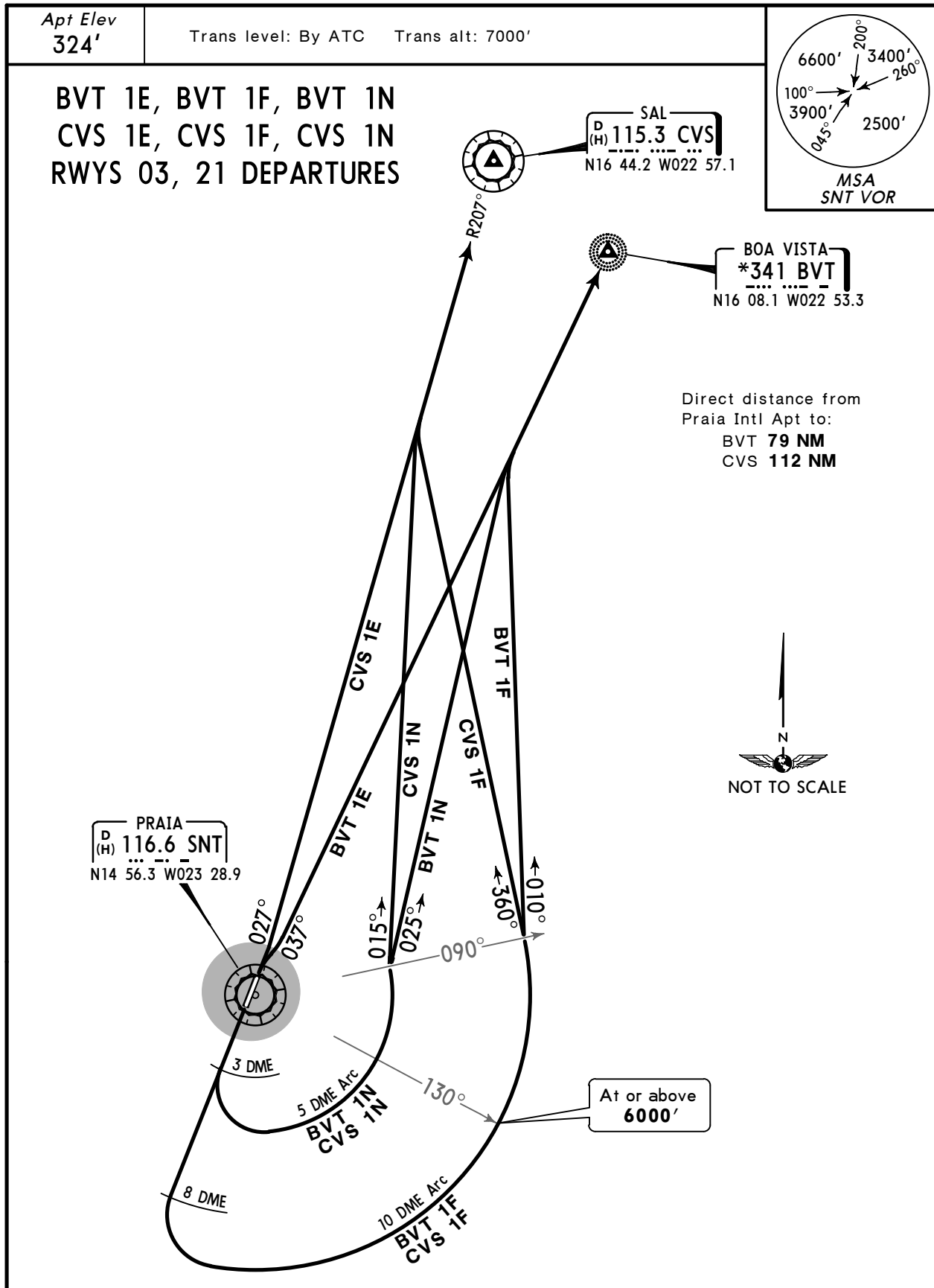


| STAR   | ROUTING   |
|--------|---|
| NCL 1P | On SNT R-346 inbound to D12 SNT, turn LEFT, along SNT 10 DME Arc, turn RIGHT, intercept SNT R-029 inbound to SNT.   |
| NCL 1T | On SNT R-346 inbound to SNT.  |
| NCL 1W | On SNT R-346 inbound to D15 SNT, turn RIGHT, along SNT 13 DME Arc, when passing SNT R-269 turn LEFT, along SNT 10 DME Arc, turn LEFT, intercept SNT R-218 inbound to SNT. |
| SVT 1P | On SNT R-333 inbound to D12 SNT, turn LEFT, along SNT 10 DME Arc, turn RIGHT, intercept SNT R-029 inbound to SNT.   |
| SVT 1T | On SNT R-333 inbound to SNT.  |
| SVT 1W | On SNT R-333 inbound to D15 SNT, turn RIGHT, along SNT 13 DME Arc, when passing SNT R-269 turn LEFT, along SNT 10 DME Arc, turn LEFT, intercept SNT R-218 inbound to SNT. |

GVNP/RAI  
PRAIA INTL

9 NOV 12 **10-3**

PRAIA, CAPE VERDE **SID**



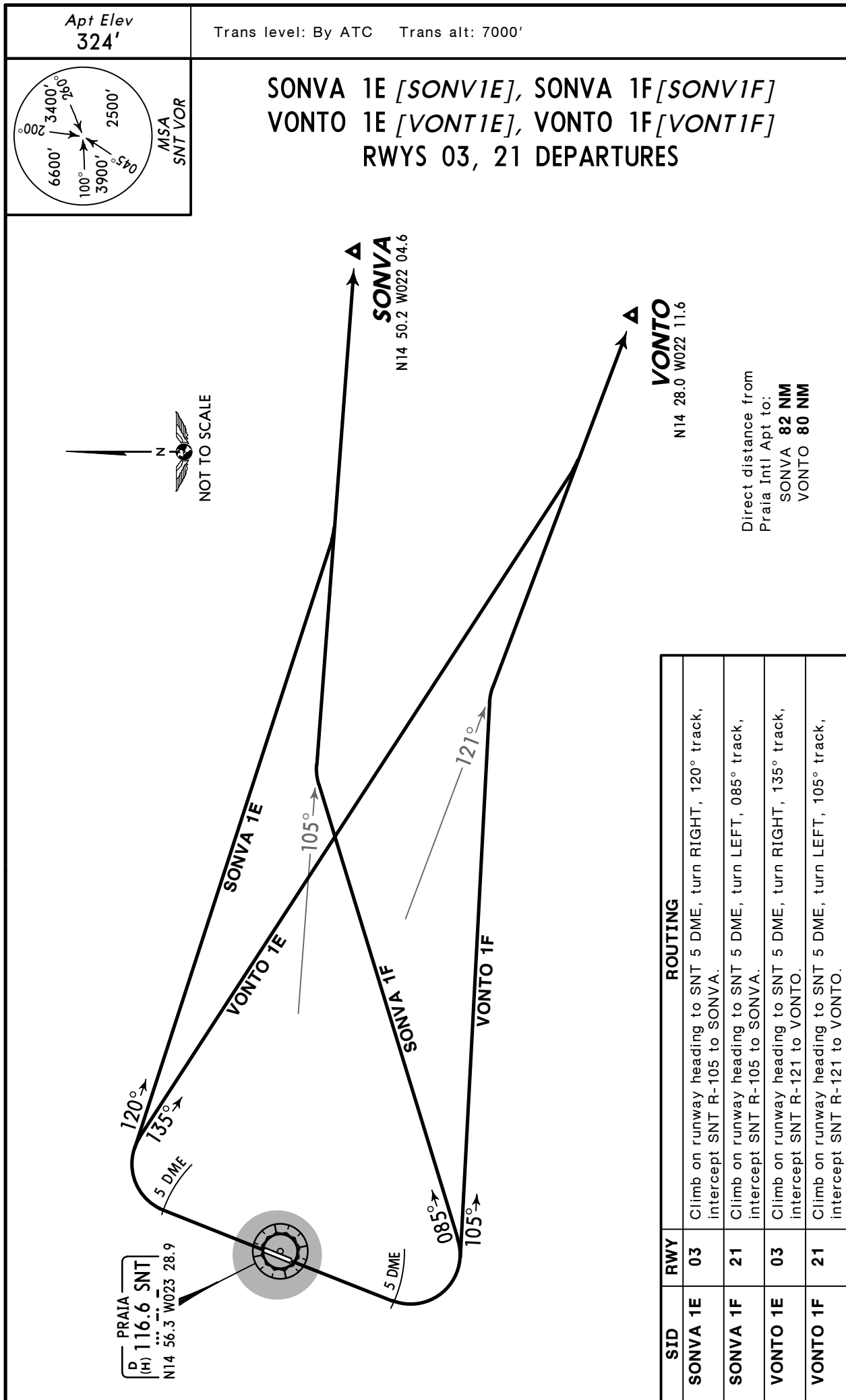
| SID    | RWY | ROUTING  |
|--------|-----|--|
| BVT 1E | 03  | Turn RIGHT, intercept SNT R-037 to BVT.  |
| BVT 1F | 21  | Climb on runway heading to SNT 8 DME, turn LEFT, along SNT 10 DME arc, when crossing SNT R-090 turn RIGHT, 010° track, intercept SNT R-037 to BVT. |
| BVT 1N |     | Climb on runway heading to SNT 3 DME, turn LEFT, along SNT 5 DME arc, when crossing SNT R-090 turn RIGHT, 025° track, intercept SNT R-037 to BVT.  |
| CVS 1E | 03  | Climb on runway heading, intercept SNT R-027 to CVS.   |
| CVS 1F | 21  | Climb on runway heading to SNT 8 DME, turn LEFT, along SNT 10 DME arc, when crossing SNT R-090 turn RIGHT, 360° track, intercept SNT R-027 to CVS. |
| CVS 1N |     | Climb on runway heading to SNT 3 DME, turn LEFT, along SNT 5 DME arc, when crossing SNT R-090 turn RIGHT, 015° track, intercept SNT R-027 to CVS.  |

**GVNP/RAI**  
**PRAIA INTL**

**JEPPESSEN**  
9 NOV 12 **(10-3A)**

**PRAIA, CAPE VERDE**

**SID**



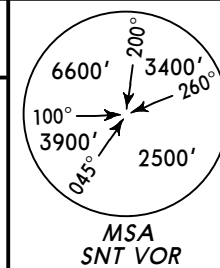
**GVNP/RAI**  
**PRAIA INTL**

**JEPPESSEN**  
9 NOV 12 (10-3B)

**PRAIA, CAPE VERDE**  
**SID**

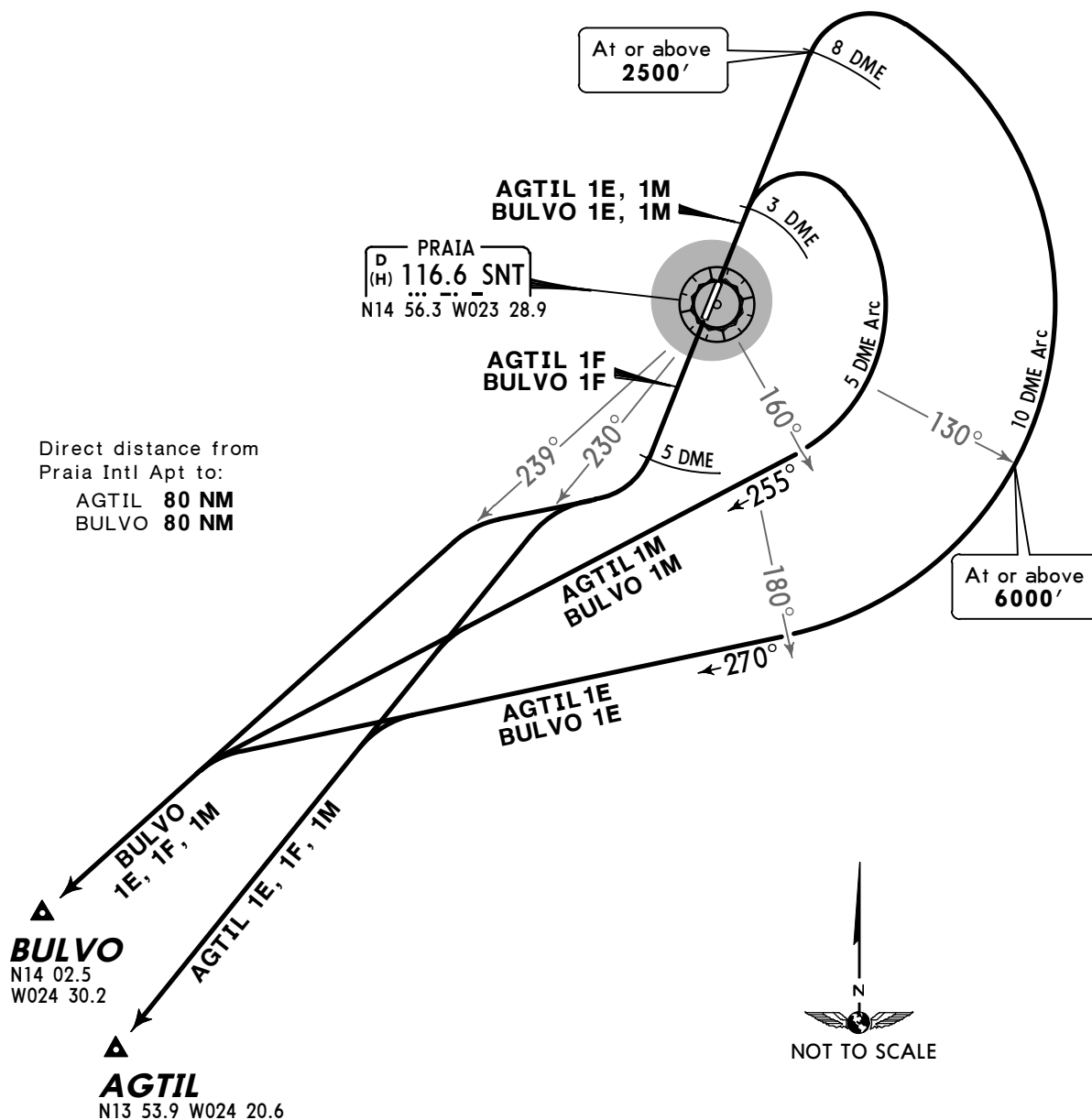
Apt Elev  
324'

Trans level: By ATC Trans alt: 7000'



**AGTIL 1E [AGT11E], AGTIL 1F [AGT11F]**  
**AGTIL 1M [AGT11M], BULVO 1E [BULV1E]**  
**BULVO 1F [BULV1F], BULVO 1M [BULV1M]**  
**RWYS 03, 21 DEPARTURES**

Direct distance from  
Praia Intl Apt to:  
AGTIL 80 NM  
BULVO 80 NM

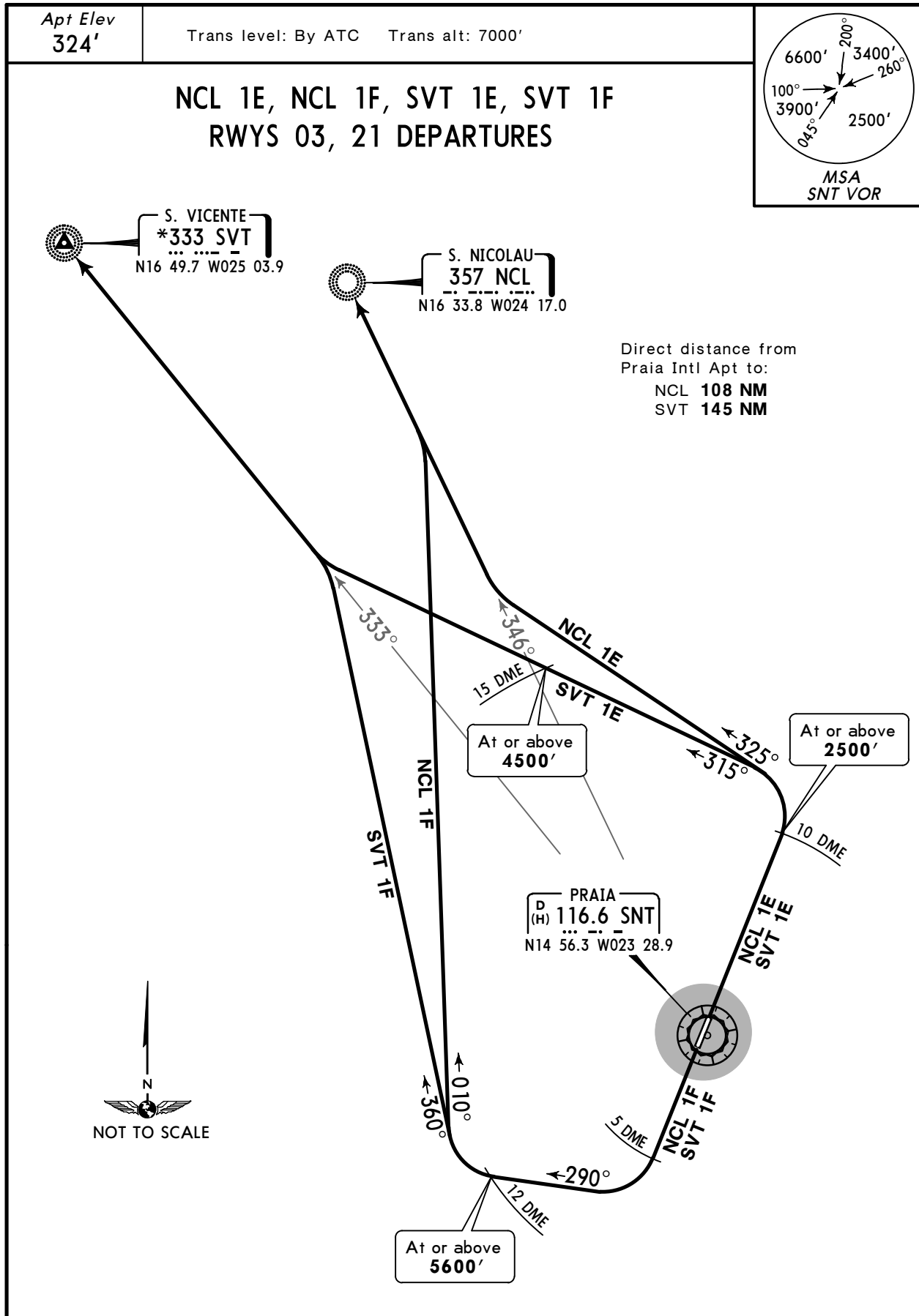


| SID      | RWY | ROUTING   |
|----------|-----|---|
| AGTIL 1E | 03  | Climb on runway heading to at or above 2500' at SNT 8 DME, turn RIGHT, along SNT 10 DME arc until crossing SNT R-180, 270° track, intercept SNT R-230 to AGTIL. |
| AGTIL 1F | 21  | Climb on runway heading to SNT 5 DME, turn RIGHT, intercept SNT R-230 to AGTIL.   |
| AGTIL 1M | 03  | Climb on runway heading to SNT 3 DME, turn RIGHT, along SNT 5 DME arc until crossing SNT R-160, 255° track, intercept SNT R-230 to AGTIL.                       |
| BULVO 1E |     | Climb on runway heading to at or above 2500' at SNT 8 DME, turn RIGHT, along SNT 10 DME arc until crossing SNT R-180, 270° track, intercept SNT R-239 to BULVO. |
| BULVO 1F | 21  | Climb on runway heading to SNT 5 DME, turn RIGHT, intercept SNT R-239 to BULVO.   |
| BULVO 1M | 03  | Climb on runway heading to SNT 3 DME, turn RIGHT, along SNT 5 DME arc until crossing SNT R-160, 255° track, intercept SNT R-239 to BULVO.                       |

GVNP/RAI  
PRAIA INTL

JEPPESSEN  
9 NOV 12 (10-3C)

PRAIA, CAPE VERDE  
SID



NCL 1E, NCL 1F, SVT 1E, SVT 1F  
RWYS 03, 21 DEPARTURES

S. VICENTE  
\*333 SVT  
N16 49.7 W025 03.9

S. NICOLAU  
357 NCL  
N16 33.8 W024 17.0

Direct distance from  
Praia Intl Apt to:  
NCL 108 NM  
SVT 145 NM

PRAIA  
D (H) 116.6 SNT  
N14 56.3 W023 28.9



| SID    | RWY | ROUTING   |
|--------|-----|---|
| NCL 1E | 03  | Climb on runway heading to at or above 2500' at SNT 10 DME, turn LEFT, 325° track, intercept SNT R-346 to NCL.                                    |
| NCL 1F | 21  | Climb on runway heading to SNT 5 DME, turn RIGHT, 290° track, at or above 5600' at SNT 12 DME turn RIGHT, 010° track, intercept SNT R-346 to NCL. |
| SVT 1E | 03  | Climb on runway heading to at or above 2500' at SNT 10 DME, turn LEFT, 315° track, intercept SNT R-333 to SVT.                                    |
| SVT 1F | 21  | Climb on runway heading to SNT 5 DME, turn RIGHT, 290° track, at or above 5600' at SNT 12 DME turn RIGHT, 360° track, intercept SNT R-333 to SVT. |



# GVNP/RAI

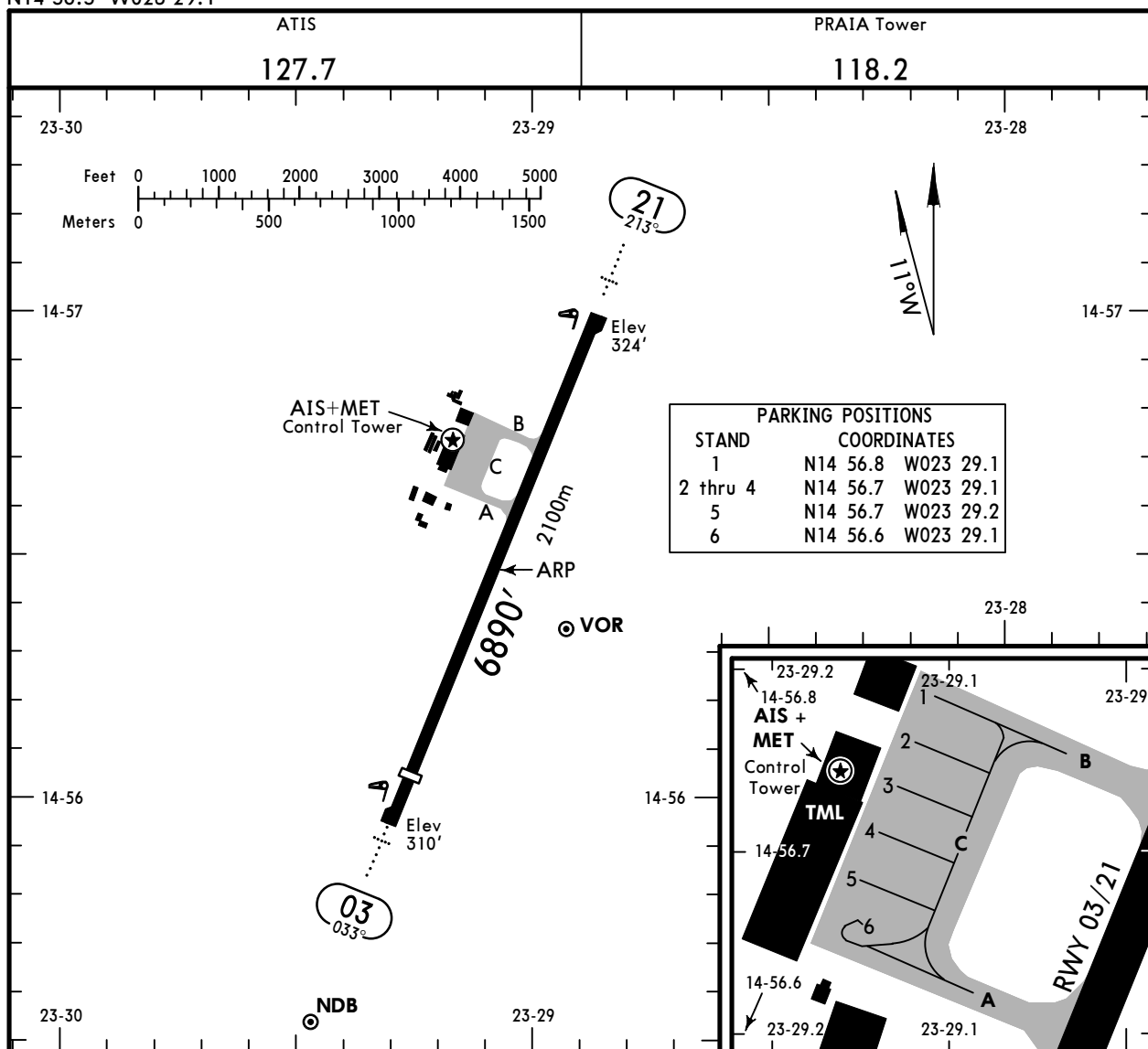
Apt Elev **324'**  
N14 56.5 W023 29.1



3 MAR 17 **(10-9)**

# PRAIA, CAPE VERDE

MANDELA INTL



### ADDITIONAL RUNWAY INFORMATION

| RWY | Landing | ALS | PAPI-L (angle 3.0°) | USABLE LENGTHS |             | TAKE-OFF    | WIDTH |
|-----|---------|-----|---------------------|----------------|-------------|-------------|-------|
|     |         |     |                     | Threshold      | Glide Slope |             |       |
| 03  | RL      | ALS | PAPI-L (angle 3.0°) | 6234' 1900m    |             | 6578' 2005m | 148'  |
| 21  |         |     |                     | 6578' 2005m    |             |             | 45m   |

### TAKE-OFF

AIR CARRIER (JAA)

All Rwy's

|   | LVP must be in force<br>RCLM (DAY only)<br>or RL | RCLM (DAY only)<br>or RL |
|---|--|--------------------------|
| A |  |                          |
| B | 250m   | 400m                     |
| C |  |                          |
| D | 300m   |                          |

**GVNP/RAI**

**JEPPESEN**  
 25 JAN 13 **(10-9S)** **Eff 7 Feb**

**Standard**  
**PRAIA, CAPE VERDE**  
**MANDELA INTL**

| STRAIGHT-IN RWY |       | A                  | B                  | C                  | D                  |
|-----------------|-------|--------------------|--------------------|--------------------|--------------------|
| <b>03</b>       | VOR ① | <b>710' (400')</b> | <b>710' (400')</b> | <b>710' (400')</b> | <b>710' (400')</b> |
|                 |       | <b>R1500m</b>      | <b>R1500m</b>      | <b>R1800m</b>      | <b>R1800m</b>      |
|                 | NDB   | <b>760' (450')</b> | <b>760' (450')</b> | <b>760' (450')</b> | <b>760' (450')</b> |
|                 |       | <b>C2300m</b>      | <b>C2300m</b>      | <b>C2500m</b>      | <b>C2500m</b>      |
| <b>21</b>       | VOR ① | <b>740' (416')</b> | <b>740' (416')</b> | <b>740' (416')</b> | <b>740' (416')</b> |
|                 |       | <b>R1500m</b>      | <b>R1500m</b>      | <b>R1900m</b>      | <b>R1900m</b>      |

① Continuous Descent Final Approach.

| CIRCLE-TO-LAND ⑤ | 100 KT             | 135 KT             | 180 KT             | 205 KT              |
|------------------|--------------------|--------------------|--------------------|---------------------|
| After VOR 03 ①②  | <b>790' (480')</b> | <b>830' (520')</b> | <b>930' (620')</b> | <b>1020' (710')</b> |
| After NDB 03 ②③  | V1500m ④           | V1600m ④           | V2400m ④           | V3600m              |
| After VOR 21 ①   | <b>790' (466')</b> | <b>830' (506')</b> | <b>930' (606')</b> | <b>1020' (696')</b> |
| NDB 21 ③         | V1500m             | V1600m             | V2400m             | V3600m              |

- ① Not authorized West of apt between R-219 and R-016 clockwise.
- ② Circling height based on rwy 03 displ thresh elev of 310'.
- ③ Not authorized West of apt between 197° and 039° clockwise.
- ④ Or higher minimums of preceding straight-in approach.
- ⑤ Entirely at pilots discretion.

**TAKE-OFF RWY 03, 21**

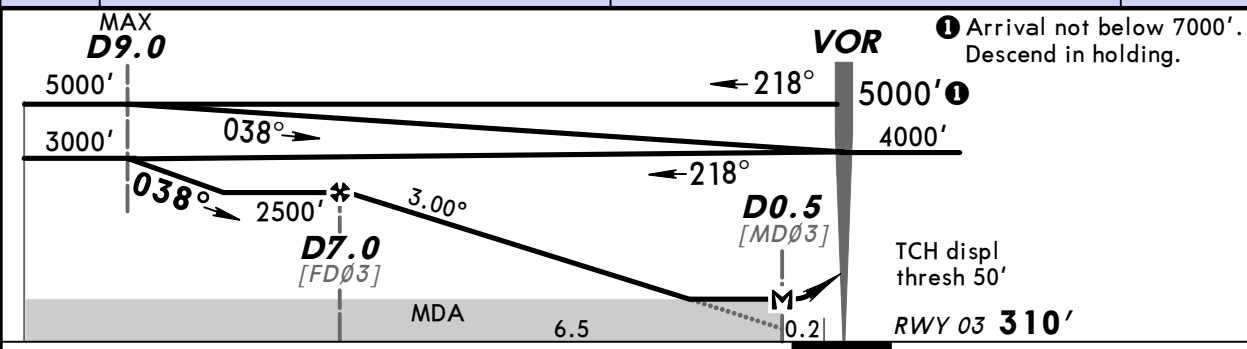
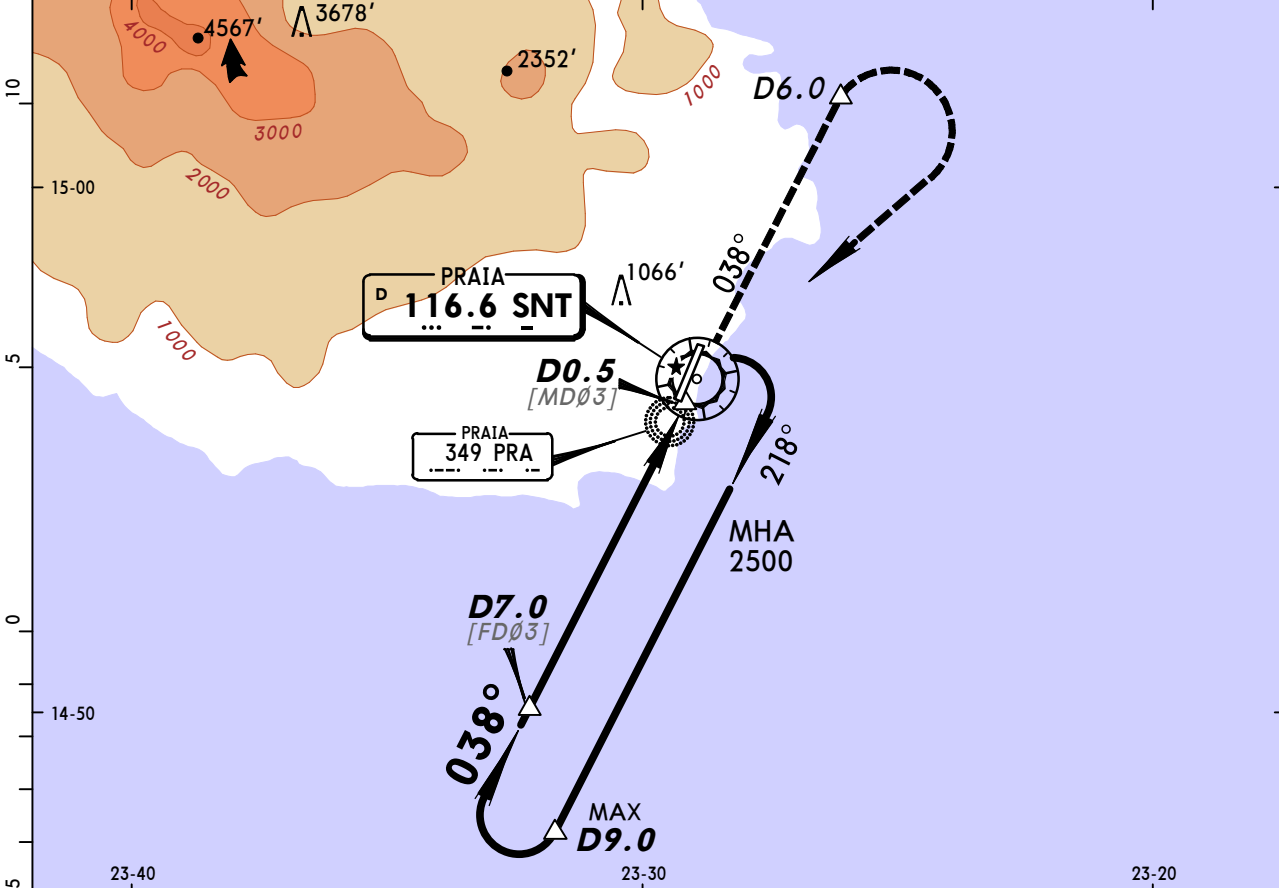
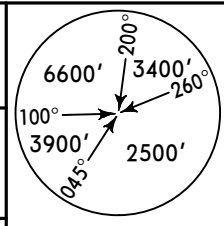
| LVP must be in Force |                          |                          |                   |
|----------------------|--------------------------|--------------------------|-------------------|
|                      | RCLM (DAY only)<br>or RL | RCLM (DAY only)<br>or RL | NIL<br>(DAY only) |
| A                    | <i>250m</i>              | <i>400m</i>              | <i>500m</i>       |
| B                    |                          |                          |                   |
| C                    |                          |                          |                   |
| D                    |                          |                          |                   |

**GVNP/RAI**  
**MANDELA INTL**



**PRAIA, CAPE VERDE**  
**VOR DME Rwy 03**

|  |                               |   |                                       |                         |                    |
|--|-------------------------------|---|---------------------------------------|-------------------------|--------------------|
| ATIS<br><b>127.7</b>   |                               |   | PRAIA Tower (APP/TWR)<br><b>118.2</b> |                         |                    |
| VOR SNT<br><b>116.6</b>  | Final Apch Crs<br><b>038°</b> | Procedure Alt<br><b>D7.0</b><br>2500' (2190') | MDA(H)<br><b>710' (400')</b>          | Apt Elev<br><b>324'</b> | RWY<br><b>310'</b> |
| <b>MISSED APCH:</b> Climb on R-038 outbound to D6.0 to 3000', then turn RIGHT to VOR and hold, or as directed. MAX 250 KT. |                               |   |                                       |                         |                    |
| Alt Set: hPa   | Rwy Elev: 11 hPa              | Trans level: By ATC                           | Trans alt: 7000'                      |                         | MSA SNT VOR        |



|                     |     |     |     |     |     |     |          |            |                          |      |
|---------------------|-----|-----|-----|-----|-----|-----|----------|------------|--------------------------|------|
| Gnd speed-Kts       | 70  | 90  | 100 | 120 | 140 | 160 | ALS PAPI | 250 KT MAX | 3000' SNT on 116.6 R-038 | D6.0 |
| Descent Angle 3.00° | 372 | 478 | 531 | 637 | 743 | 849 |          |            |                          |      |
| MAP at D0.5         |     |     |     |     |     |     |          |            |                          |      |

| STRAIGHT-IN LANDING RWY03 |         | CIRCLE-TO-LAND  |                    |
|---------------------------|---------|---|--------------------|
| MDA(H) <b>710' (400')</b> |         | Not authorized West of apt between R-219 and R-016 clockwise. ENTIRELY AT PILOTS DISCRETION |                    |
|                           | ALS out | Max Kts   | MDA(H)             |
| A                         |         | 100   | 790' (480') 1600m  |
| B                         | 1600m   | 135   | 830' (520') 1600m  |
| C                         |         | 180   | 930' (620') 2800m  |
| D                         | 2000m   | 205   | 1020' (710') 3600m |

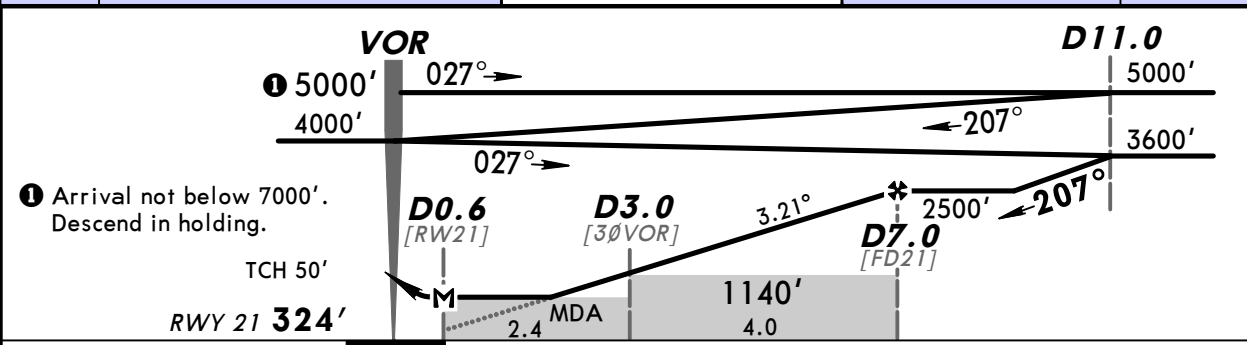
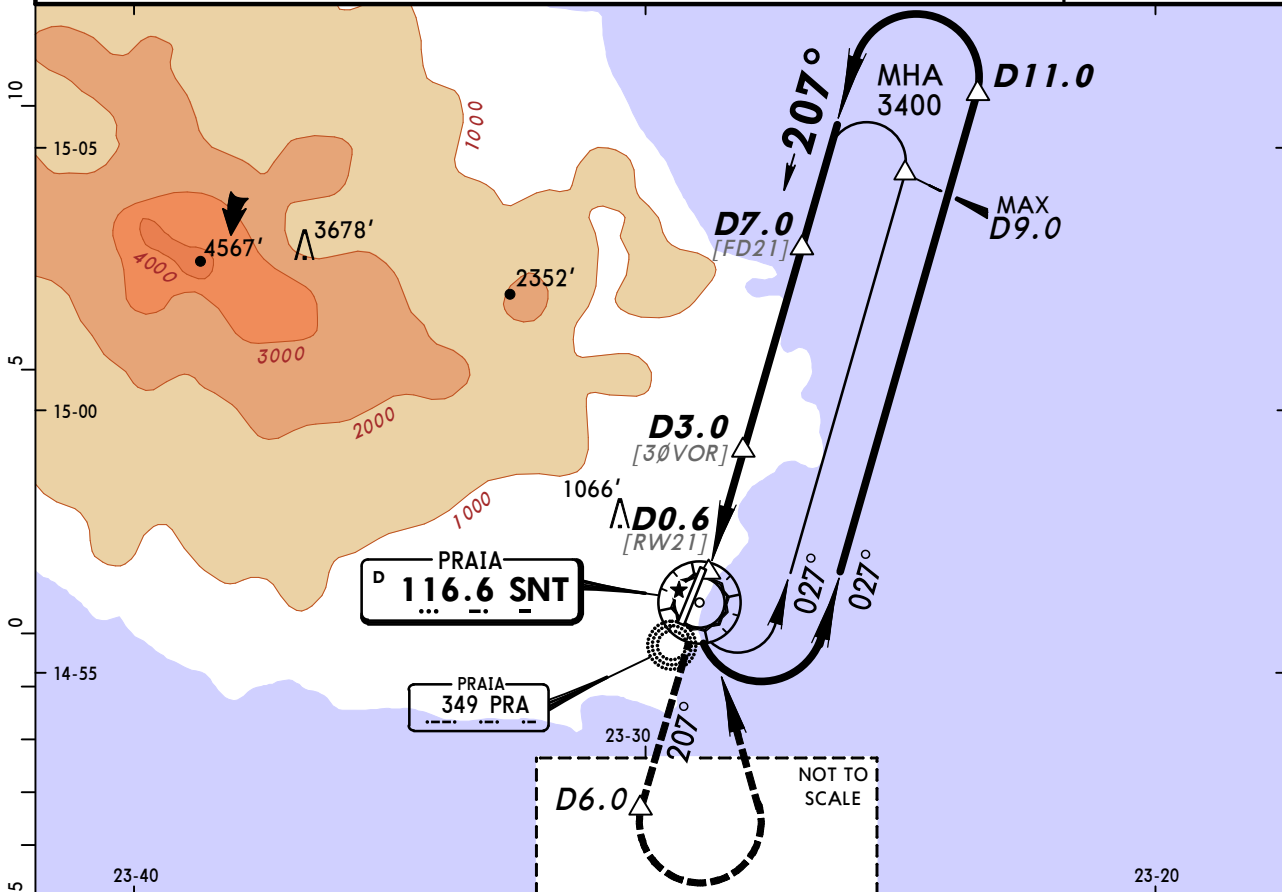
CHANGES: MHA. © JEPPesen, 2005, 2014. ALL RIGHTS RESERVED.

**GVNP/RAI**  
**MANDELA INTL**



**PRAIA, CAPE VERDE**  
**VOR DME Rwy 21**

|  |                               |  |                                       |   |  |
|--|-------------------------------|--|---------------------------------------|---|--|
| ATIS<br><b>127.7</b>   |                               |  | PRAIA Tower (APP/TWR)<br><b>118.2</b> |   |  |
| VOR SNT<br><b>116.6</b>  | Final Apch Crs<br><b>207°</b> | Procedure Alt<br><b>D7.0</b><br><b>2500' (2176')</b> | MDA(H)<br><b>740' (416')</b>          | Apt Elev <b>324'</b><br>RWY <b>324'</b> |  |
| <b>MISSED APCH: Climb on R-207 outbound to D6.0 to 3600', then turn LEFT direct to VOR and hold, or as directed. Do not turn before MAP. MAX 250 KT.</b> |                               |  |                                       |   |  |
| Alt Set: hPa   |                               | Rwy Elev: 12 hPa                                     |                                       | Trans level: By ATC                     |  |
|  |                               | Trans alt: 7000'                                     |                                       | MSA SNT VOR                             |  |



|                      |       |     |     |     |     |     |          |            |         |           |      |     |
|----------------------|-------|-----|-----|-----|-----|-----|----------|------------|---------|-----------|------|-----|
| <i>Gnd speed-Kts</i> | 70    | 90  | 100 | 120 | 140 | 160 | ALS PAPI | 250 KT MAX | 3600' ↑ | SNT 116.6 | D6.0 |     |
| <i>Descent Angle</i> | 3.21° | 398 | 511 | 568 | 682 | 795 |          |            |         |           |      | 909 |
| <i>MAP at D0.6</i>   |       |     |     |     |     |     |          |            |         |           |      |     |

|  |       |         |   |              |       |
|--|-------|---------|---|--------------|-------|
| STRAIGHT-IN LANDING RWY21<br>MDA(H) <b>740' (416')</b> |       |         | CIRCLE-TO-LAND<br>Not authorized West of apt between R-219 and R-016 clockwise.<br><b>ENTIRELY AT PILOTS DISCRETION</b> |              |       |
|  |       | ALS out | Max Kts   | MDA(H)       |       |
| A  | 1600m |         | 100   | 790' (466')  | 1600m |
| B  | 1600m |         | 135   | 830' (506')  | 1600m |
| C  | 2000m |         | 180   | 930' (606')  | 2800m |
| D  | 2000m |         | 205   | 1020' (696') | 3600m |

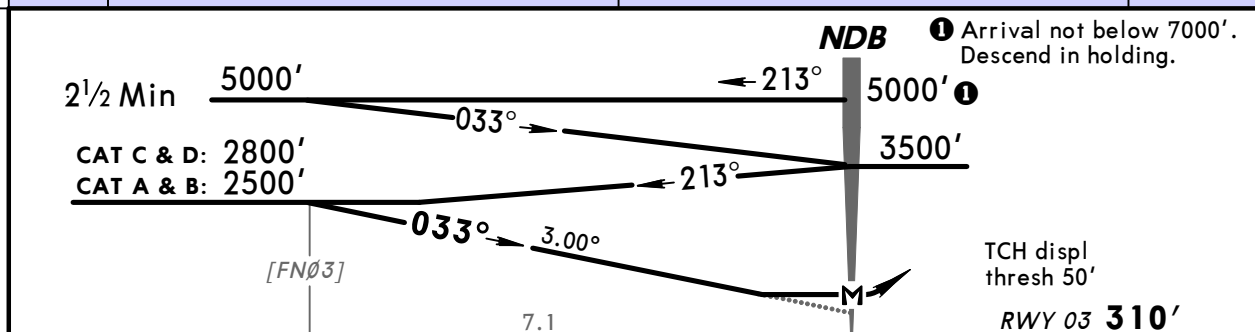
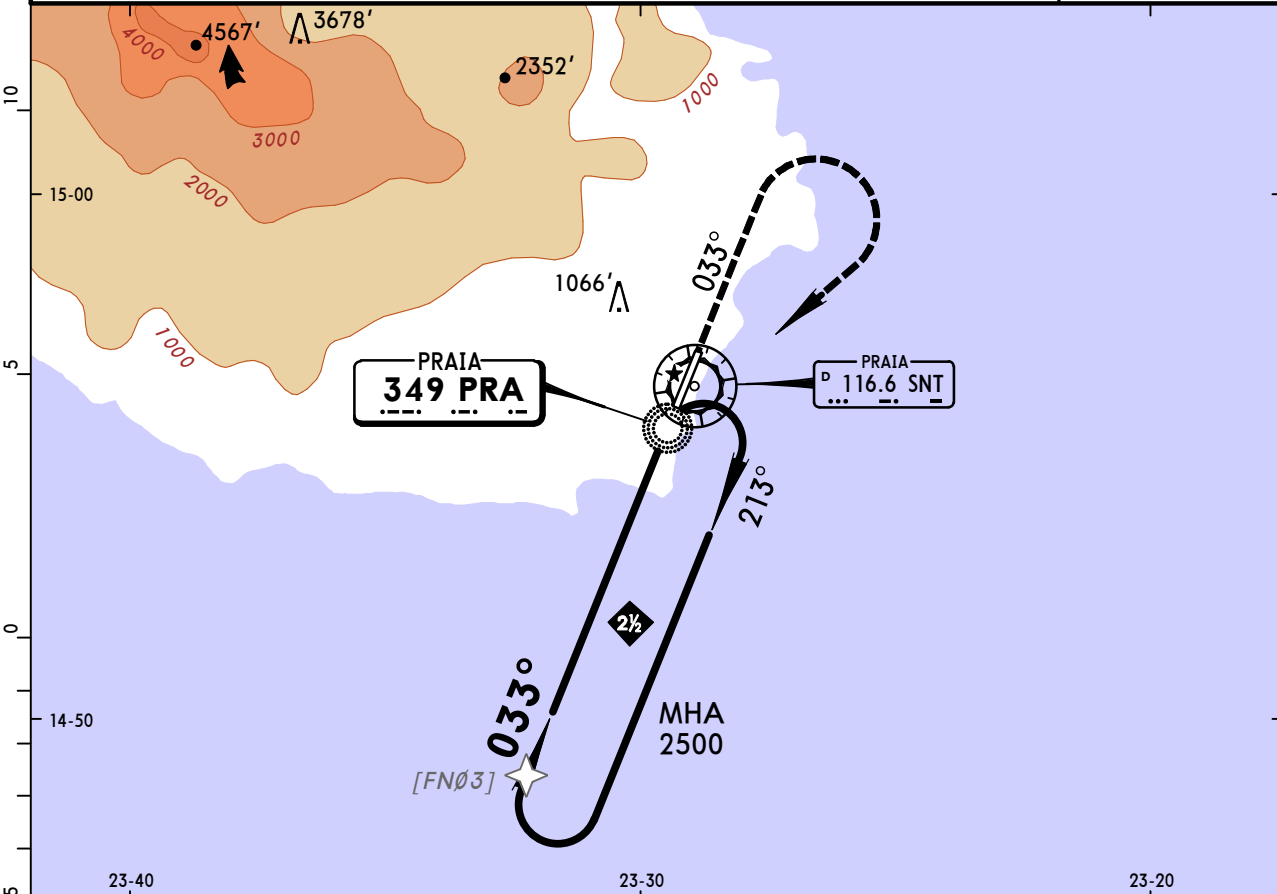
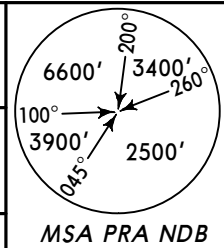
PANS OPS

**GVNP/RAI**  
**MANDELA INTL**

**JEPPESSEN**  
30 MAY 14 (16-1)

**PRAIA, CAPE VERDE**  
**NDB Rwy 03**

|  |                                      |                              |                                       |                             |                        |
|--|--------------------------------------|------------------------------|---------------------------------------|-----------------------------|------------------------|
| ATIS<br><b>127.7</b>   |                                      |                              | PRAIA Tower (APP/TWR)<br><b>118.2</b> |                             |                        |
| <b>NDB PRA</b><br><b>349</b>   | <b>Final Apch Crs</b><br><b>033°</b> | <b>Minimum Alt</b><br>No FAF | <b>MDA(H)</b><br><b>760' (450')</b>   | <b>Apt Elev</b> <b>324'</b> | <b>RWY</b> <b>310'</b> |
| <b>MISSED APCH:</b> Climb on track 033° to 2000', then turn RIGHT direct to NDB climbing to 2800' (CAT A & B: 2500') to enter holding, or as directed. Do not turn before MAP. MAX 250 KT. |                                      |                              |                                       |                             |                        |
| Alt Set: hPa   |                                      | Rwy Elev: 11 hPa             | Trans level: By ATC                   |                             | Trans alt: 7000'       |



|                        |     |     |     |     |     |          |            |               |
|------------------------|-----|-----|-----|-----|-----|----------|------------|---------------|
| TO DISPLACED THRESHOLD |     |     |     |     |     | ALS PAPI | 250 KT MAX | 2000' on 033° |
| Gnd speed-Kts          | 70  | 90  | 100 | 120 | 140 | 160      |            |               |
| Descent Angle 3.00°    | 372 | 478 | 531 | 637 | 743 | 849      |            |               |
| MAP at NDB             |     |     |     |     |     |          |            |               |

|                           |         |         |   |       |  |
|---------------------------|---------|---------|---|-------|--|
| STRAIGHT-IN LANDING RWY03 |         |         | CIRCLE-TO-LAND  |       |  |
| MDA(H) <b>760' (450')</b> |         |         | Not authorized West of apt between 197° and 039° clockwise. ENTIRELY AT PILOTS DISCRETION |       |  |
|                           | ALS out | Max Kts | MDA(H)  |       |  |
| A                         | 1600m   | 100     | 790' (480')   | 1600m |  |
| B                         | 1600m   | 135     | 830' (520')   | 1600m |  |
| C                         | 2000m   | 180     | 930' (620')   | 2800m |  |
| D                         | 2400m   | 205     | 1020' (710')  | 3600m |  |

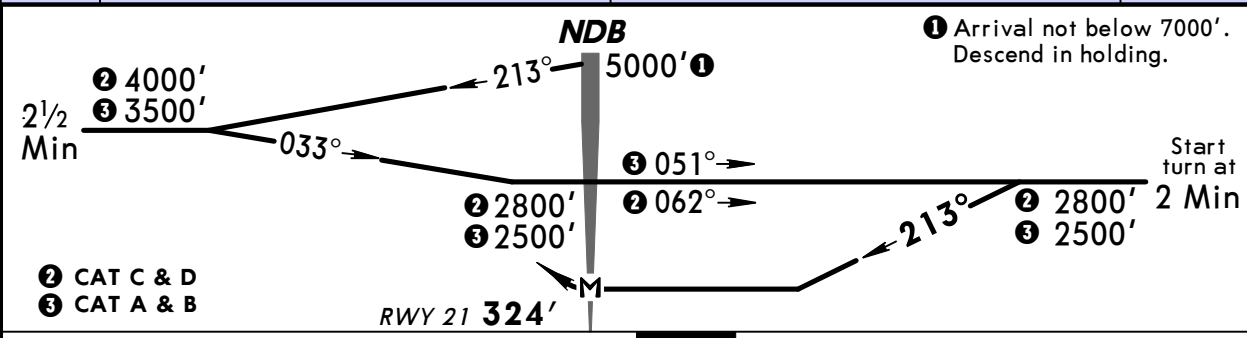
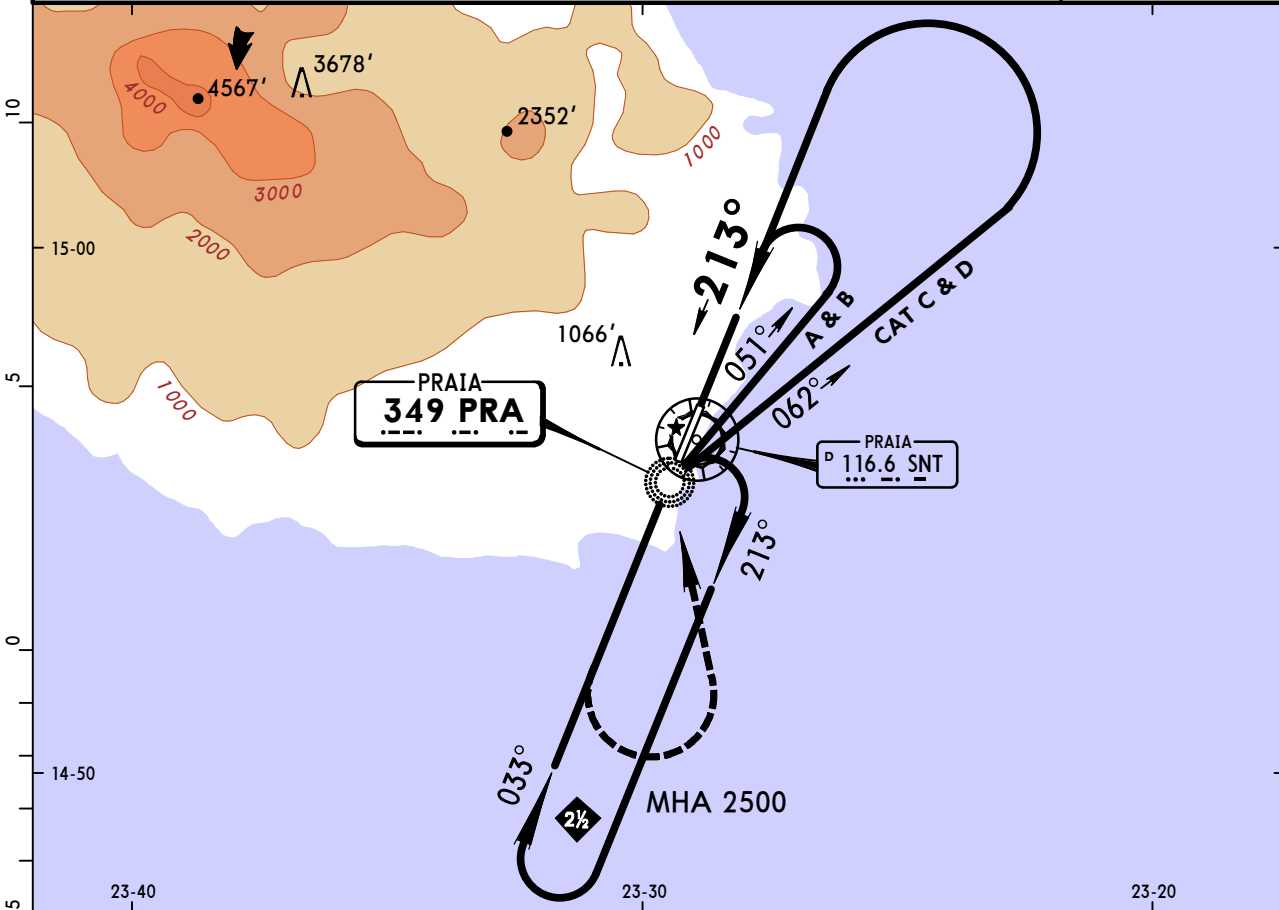
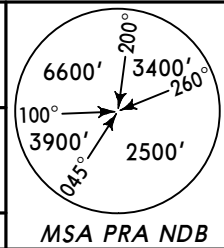
CHANGES: Procedure. © JEPPESSEN, 2005, 2014. ALL RIGHTS RESERVED.

**GVNP/RAI**  
**MANDELA INTL**

**JEPPESSEN**  
30 MAY 14 **(16-2)**

**PRAIA, CAPE VERDE**  
**NDB Rwy 21**

|   |  |                              |                                       |                             |                        |
|---|--|------------------------------|---------------------------------------|-----------------------------|------------------------|
| ATIS<br><b>127.7</b>  |  |                              | PRAIA Tower (APP/TWR)<br><b>118.2</b> |                             |                        |
| <b>NDB</b><br>PRA<br><b>349</b>   | <b>Final</b><br><i>Apch Crs</i><br><b>213°</b> | <b>Minimum Alt</b><br>No FAF | <b>MDA(H)</b><br>Refer to<br>Minimums | <b>Apt Elev</b> <b>324'</b> | <b>RWY</b> <b>324'</b> |
| <b>MISSED APCH:</b> Climb on track 213° to 2000', then turn LEFT direct to NDB climbing to 2800' (CAT A & B: 2500') to enter holding, or as directed. Do not turn before MAP. MAX 250 KT. |  |                              |                                       |                             |                        |
| Alt Set: hPa  |  | Rwy Elev: 12 hPa             | Trans level: By ATC                   | Trans alt: 7000'            |                        |



|            |  |  |  |  |  |          |                      |                                     |
|------------|--|--|--|--|--|----------|----------------------|-------------------------------------|
| MAP at NDB |  |  |  |  |  | ALS PAPI | <b>250 KT</b><br>MAX | <b>2000'</b><br>↑<br>on <b>213°</b> |
|------------|--|--|--|--|--|----------|----------------------|-------------------------------------|

|                            |                       |  |                                |
|----------------------------|-----------------------|--|--------------------------------|
| <b>STRAIGHT-IN LANDING</b> |                       | <b>CIRCLE-TO-LAND</b><br>Not authorized West of apt between 197° and 039° clockwise.<br><b>ENTIRELY AT PILOTS DISCRETION</b> |                                |
| <b>A</b>                   | <b>NOT AUTHORIZED</b> | Max Kts  | MDA(H)                         |
| <b>B</b>                   |                       | 100  | <b>790'</b> (466')      1600m  |
| <b>C</b>                   |                       | 135  | <b>830'</b> (506')      1600m  |
| <b>D</b>                   |                       | 180  | <b>930'</b> (606')      2800m  |
|                            |                       | 205  | <b>1020'</b> (696')      3600m |

## **TERMINAL CHART CHANGE NOTICES**

**No Chart Change Notices for Airport GVNP**