

General Information

Location: KUTAISI GEO
ICAO/IATA: UGKO / KUT
Lat/Long: N42° 10.61', E042° 28.96'
Elevation: 160 ft

Airport Use: Public
Daylight Savings: Not Observed
UTC Conversion: -4:00 = UTC
Magnetic Variation: 6.0° E

Fuel Types: Jet A-1
Repair Types: Major Airframe, Major Engine
Customs: Yes
Airport Type: IFR
Landing Fee: Yes
Control Tower: Yes
Jet Start Unit: No
LLWS Alert: No
Beacon: Yes

Sunrise: 0429 Z
Sunset: 1417 Z

Runway Information

Runway: 07
Length x Width: 8202 ft x 148 ft
Surface Type: asphalt
TDZ-Elev: 143 ft
Lighting: Edge, ALS, Centerline
Stopway: 197 ft

Runway: 25
Length x Width: 8202 ft x 148 ft
Surface Type: asphalt
TDZ-Elev: 160 ft
Lighting: Edge, ALS, Centerline
Stopway: 197 ft

Communication Information

Kutaisi Tower: 125.500
Kutaisi Approach: 127.100

UGKO/KUT KOPITNARI

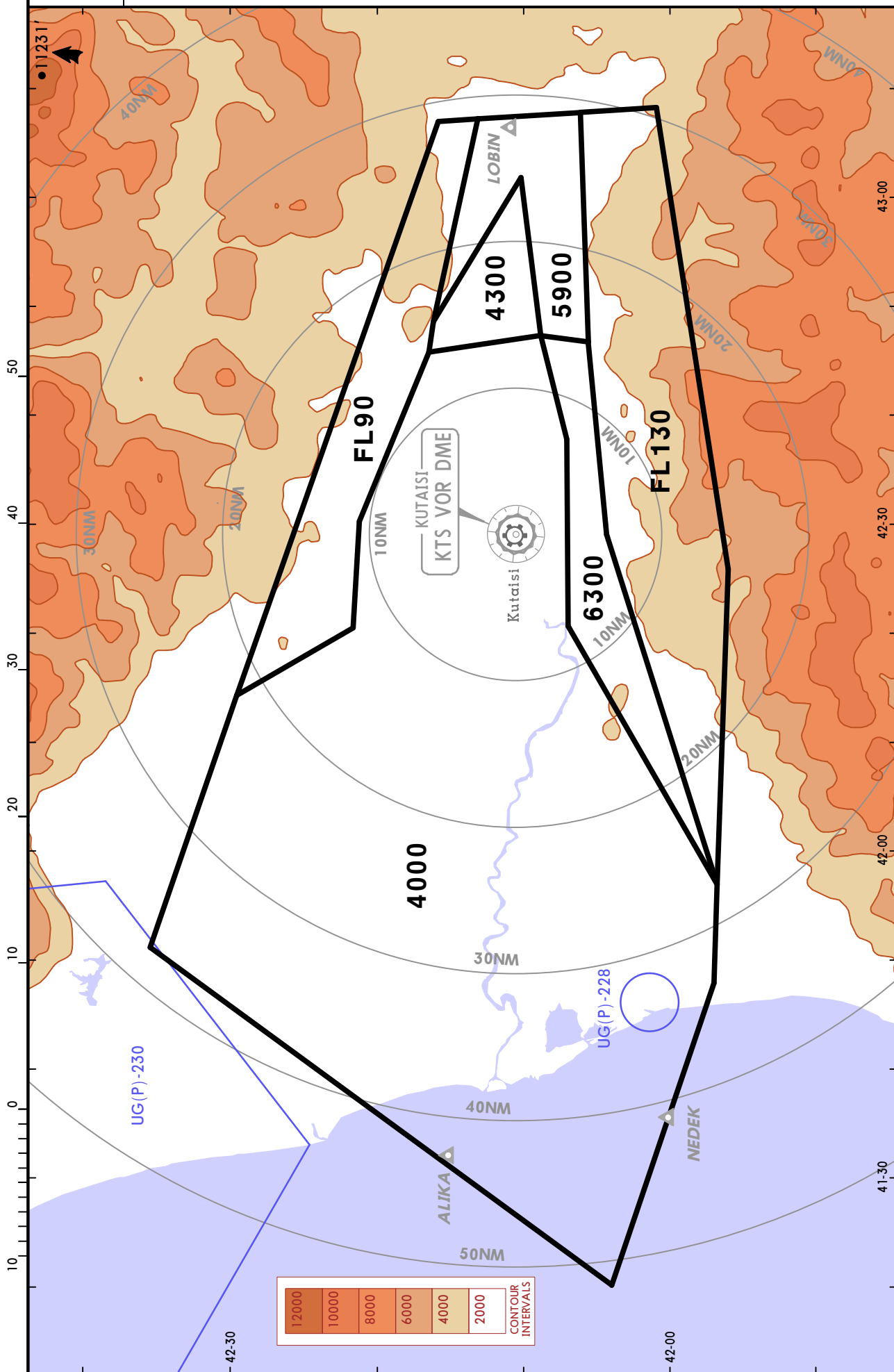
JEPPESEN
27 MAR 15 **10-1R** Eff 2 Apr

KUTAISI, GEORGIA

RADAR MINIMUM ALTITUDES

Apt Elev
160'

Alt Set: hPa
Trans level: FL90 Trans alt: 7000'
The published minimum altitudes integrate a correction for low temperatures.



CHANGES: New chart.

© JEPPESEN, 2015. ALL RIGHTS RESERVED.

UGKO/KUT
KOPITNARI

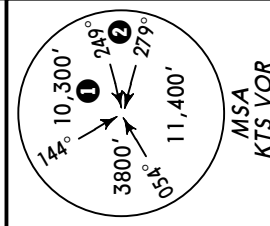
JEPPESSEN
14 JUN 13 10-2 Eff 27 Jun

KUTAISI, GEORGIA

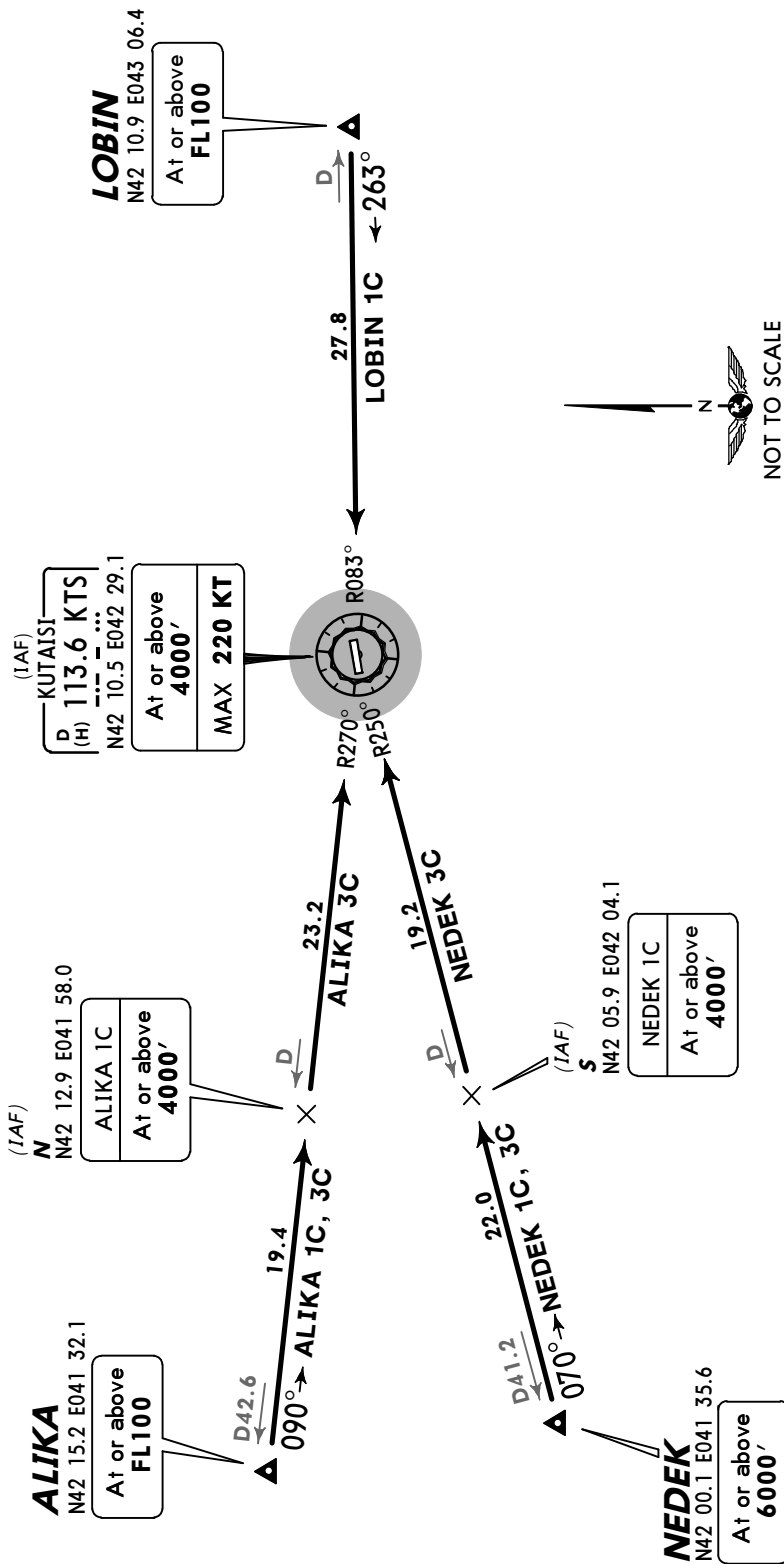
STAR

Apt Elev 160'
Alt Set: hPa
Trans level: FL90 Trans alt: 7000'

ALIKA ONE CHARLIE (ALIKA 1C) [ALIK1C]
ALIKA THREE CHARLIE (ALIKA 3C) [ALIK3C]
LOBIN ONE CHARLIE (LOBIN 1C) [LOBI1C]
NEDEK ONE CHARLIE (NEDEK 1C) [NEDE1C]
NEDEK THREE CHARLIE (NEDEK 3C) [NEDE3C]
RWY 07 ARRIVALS



- 1 3800' within 10 NM
- 2 7000' within 10 NM



STAR	ROUTING
ALIKA 1C	Intercept KTS R-270 inbound to N.
ALIKA 3C	Intercept KTS R-270 inbound to KTS.
LOBIN 1C	Intercept KTS R-083 inbound to KTS.
NEDEK 1C	Intercept KTS R-250 inbound to S.
NEDEK 3C	Intercept KTS R-250 inbound to KTS.

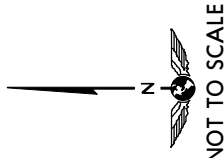
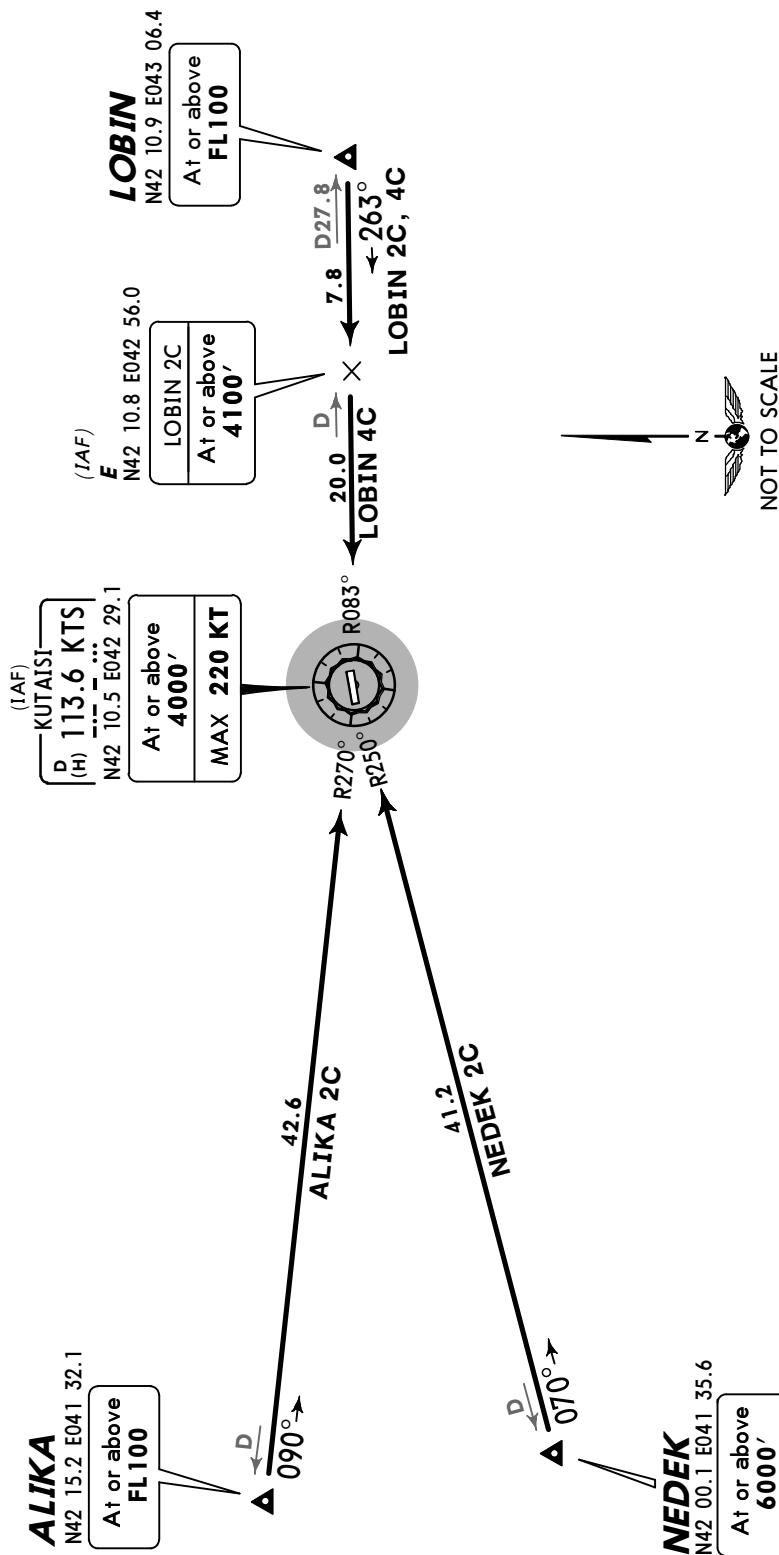
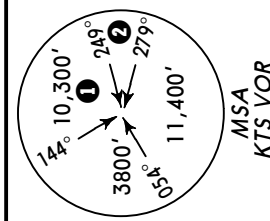
UGKO/KUT
KOPITNARI

JEPPESSEN
14 JUN 13 (10-2A) Eff 27 Jun

KUTAISI, GEORGIA
STAR

Apt Elev 160'
Alt Set: hPa
Trans level: FL90 Trans alt: 7000'

ALIKA TWO CHARLIE (ALIKA 2C) [ALIK2C]
LOBIN TWO CHARLIE (LOBIN 2C) [LOBI2C]
LOBIN FOUR CHARLIE (LOBIN 4C) [LOBI4C]
NEDEK TWO CHARLIE (NEDEK 2C) [NEDE2C]
RWY 25 ARRIVALS



- 1 3800' within 10 NM
- 2 7000' within 10 NM

STAR	ROUTING
ALIKA 2C	Intercept KTS R-270 inbound to KTS.
LOBIN 2C	Intercept KTS R-083 inbound to E.
LOBIN 4C	Intercept KTS R-083 inbound to KTS.
NEDEK 2C	Intercept KTS R-250 inbound to KTS.

UGKO/KUT
KOPITNARI

JEPPESEN
14 JUN 13 **10-3** **Eff 27 Jun**

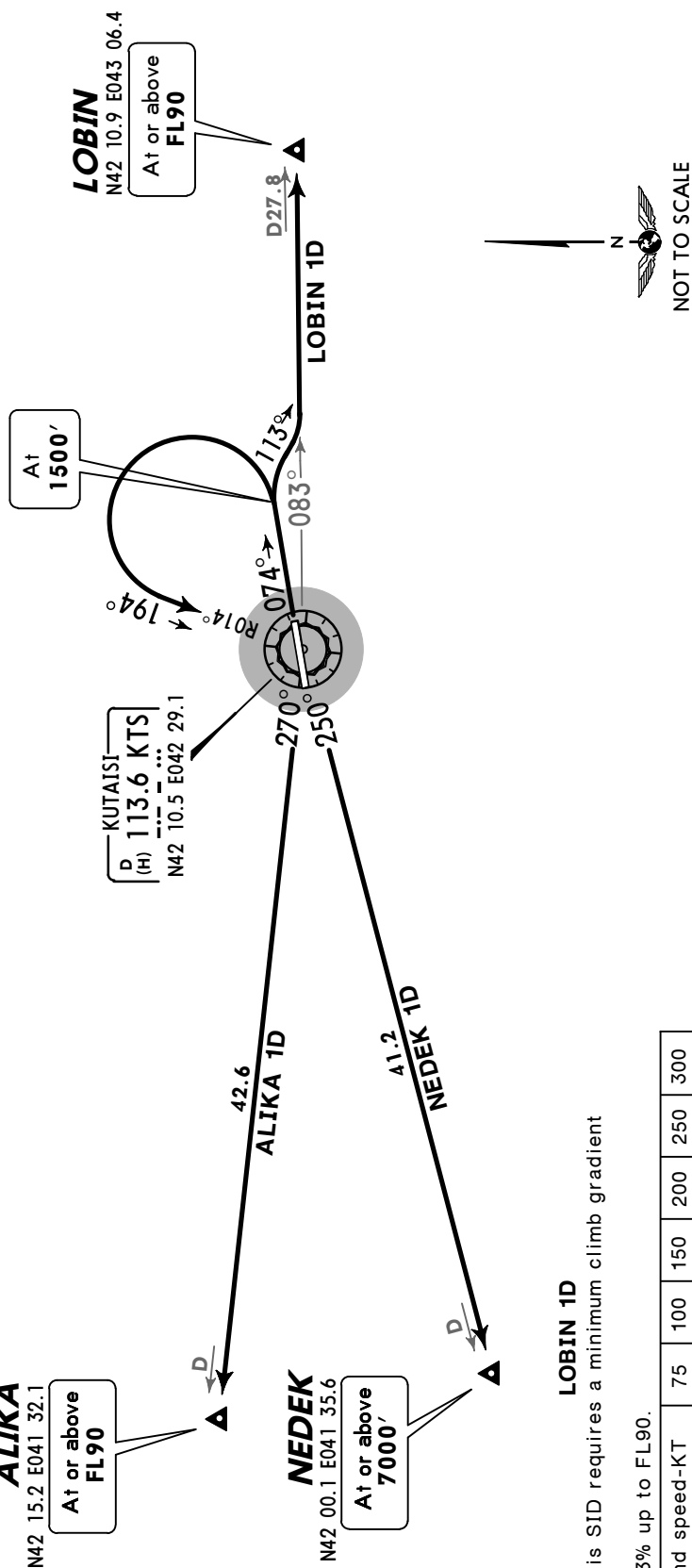
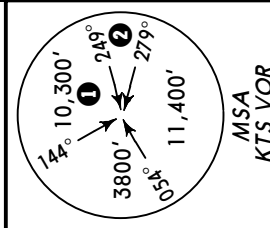
KUTAISI, GEORGIA

SID

Apt Elev
160'

Trans level: FL90 Trans alt: 7000'
1. No turn before DER.
2. MAX 250 KT during turns.

ALIKA 1D [ALIK1D]
LOBIN 1D [LOBI1D]
NEDEK 1D [NEDE1D]
RWY 07 DEPARTURES



- ① 3800' within 10 NM
- ② 7000' 3800' within 10 NM

LOBIN 1D: Initial climb clearance FL90
NEDEK 1D: Initial climb clearance 7000'

ROUTING

SID	ROUTING
ALIKA 1D	Climb on runway heading, at 1500' turn LEFT, intercept KTS R-014 inbound to KTS, KTS R-270 to ALIKA.
LOBIN 1D	Climb on runway heading, at 1500' turn RIGHT, 113° track, intercept KTS R-083 to LOBIN.
NEDEK 1D	Climb on runway heading, at 1500' turn LEFT, intercept KTS R-014 inbound to KTS, KTS R-250 to NEDEK.

Gnd speed-KT	75	100	150	200	250	300
5.3% V/V (fpm)	403	537	805	1073	1342	1610

This SID requires a minimum climb gradient of 5.3% up to FL90.

UGKO/KUT
KOPITNARI

JEPPESSEN
14 JUN 13 10-3A Eff 27 Jun

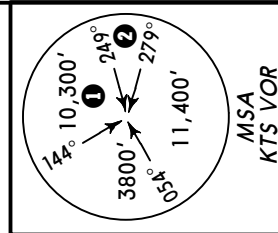
KUTAISI, GEORGIA

SID

Apt Elev
160'

Trans level: FL90 Trans alt: 7000'
1. No turn before DER.
2. MAX 250 KT during turns.

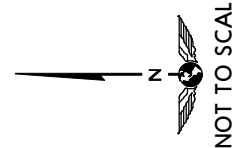
ALIKA 2D [ALIK2D]
LOBIN 2D [LOBI2D]
NEDEK 2D [NEDE2D]
RWY 25 DEPARTURES



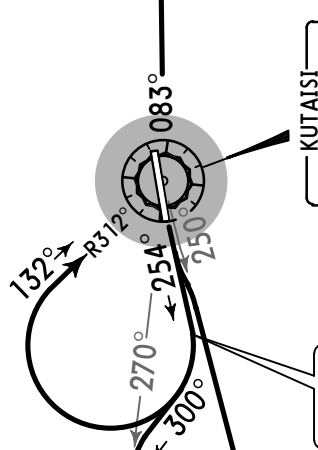
LOBIN
N42 10.9 E043 06.4

At or above
FL90

LOBIN 2D
27.8



KUTAISI
D (H) 113.6 KTS
N42 10.5 E042 29.1



ALIKA
N42 15.2 E041 32.1

At or above
FL90

D42.6

NEDEK
N42 00.1 E041 35.6

At or above
7000'

D41.2

ALIKA 2D

This SID requires a minimum climb gradient of 4.0% up to 4000'.

Grnd speed-KT	75	100	150	200	250	300
4.0% V/V (fpm)	304	405	608	810	1013	1215

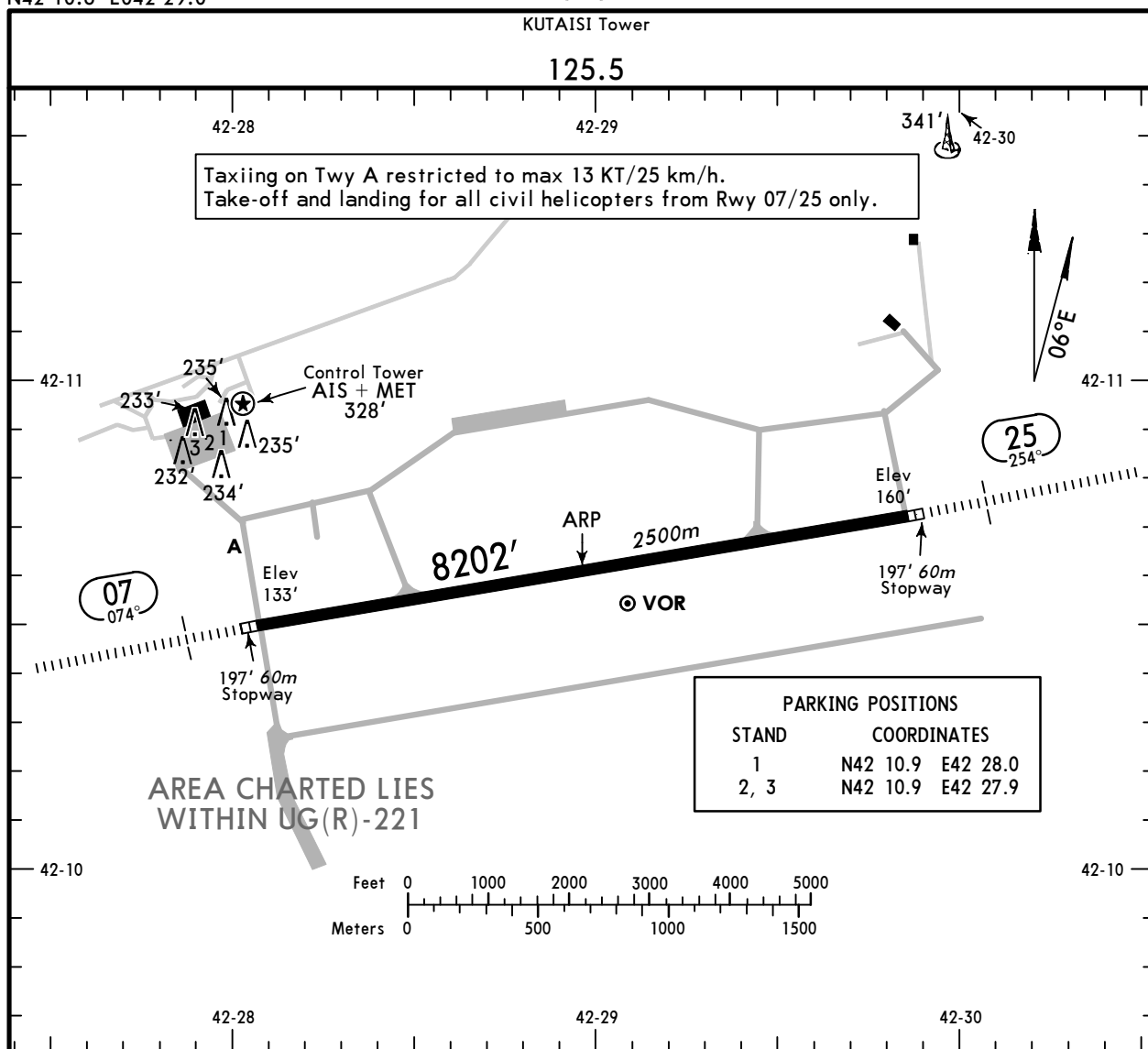
SID	ROUTING
ALIKA 2D	Climb on runway heading, at 1500' turn RIGHT, 300° track, intercept KTS R-270 to ALIKA.
LOBIN 2D	Climb on runway heading, at 1500' turn RIGHT, intercept KTS R-312 inbound to KTS, KTS R-083 to LOBIN.
NEDEK 2D	Climb on runway heading, intercept KTS R-250 to NEDEK.

- ① 3800' within 10 NM
- ② 7000' 3800' within 10 NM

UGKO/KUT
 Apt Elev **160'**
 N42 10.6 E042 29.0

JEPPESEN
 14 JUN 13 **(10-9)** Eff 27 Jun

KUTAISI, GEORGIA
KOPITNARI



ADDITIONAL RUNWAY INFORMATION					
RWY			USABLE LENGTHS		WIDTH
			Threshold	Glide Slope	
07 25	HIRL (60m) CL (30m) HIALS PAPI-L (3.0°)		7231' 7109'	2204m 2167m	148' 45m

JAR-OPS		TAKE-OFF 1		
All Rwys				
LVP must be in force				
	RL & CL	RCLM (DAY only) or RL	RCLM (DAY only) or RL	NIL (DAY only)
A				
B	200m	250m	400m	500m
C				
D	250m	300m		

1 Operators applying U.S. Ops Specs: CL required below 300m.

UGKO/KUT



Standard

14 JUN 13

10-9S

Eff 27 Jun

KUTAISI, GEORGIA
KOPITNARI

STRAIGHT-IN RWY		A	B	C	D
07	ILS	333' (200')	333' (200')	333' (200')	333' (200')
	Full	R550m	R550m	R550m	R550m
	Limited	R750m	R750m	R750m	R750m
	ALS out	R1200m	R1200m	R1200m	R1200m
	LOC ①	490' (357')	490' (357')	490' (357')	490' (357')
	ALS out	R900m R1500m	R900m R1500m	R900m R1600m	R900m R1600m
	VOR ①	570' (437')	570' (437')	570' (437')	570' (437')
	ALS out	R1300m R1500m	R1300m R1500m	R1300m R2000m	R1300m R2000m
25	ILS	360' (200')	360' (200')	360' (200')	360' (200')
	Full	R550m	R550m	R550m	R550m
	Limited	R750m	R750m	R750m	R750m
	ALS out	R1200m	R1200m	R1200m	R1200m
	LOC ①	510' (350')	510' (350')	510' (350')	510' (350')
	ALS out	R900m R1500m	R900m R1500m	R900m R1600m	R900m R1600m
	VOR ①	510' (350')	510' (350')	510' (350')	510' (350')
	ALS out	R900m R1500m	R900m R1500m	R900m R1600m	R900m R1600m

① Continuous Descent Final Approach.

TAKE-OFF RWY 07, 25

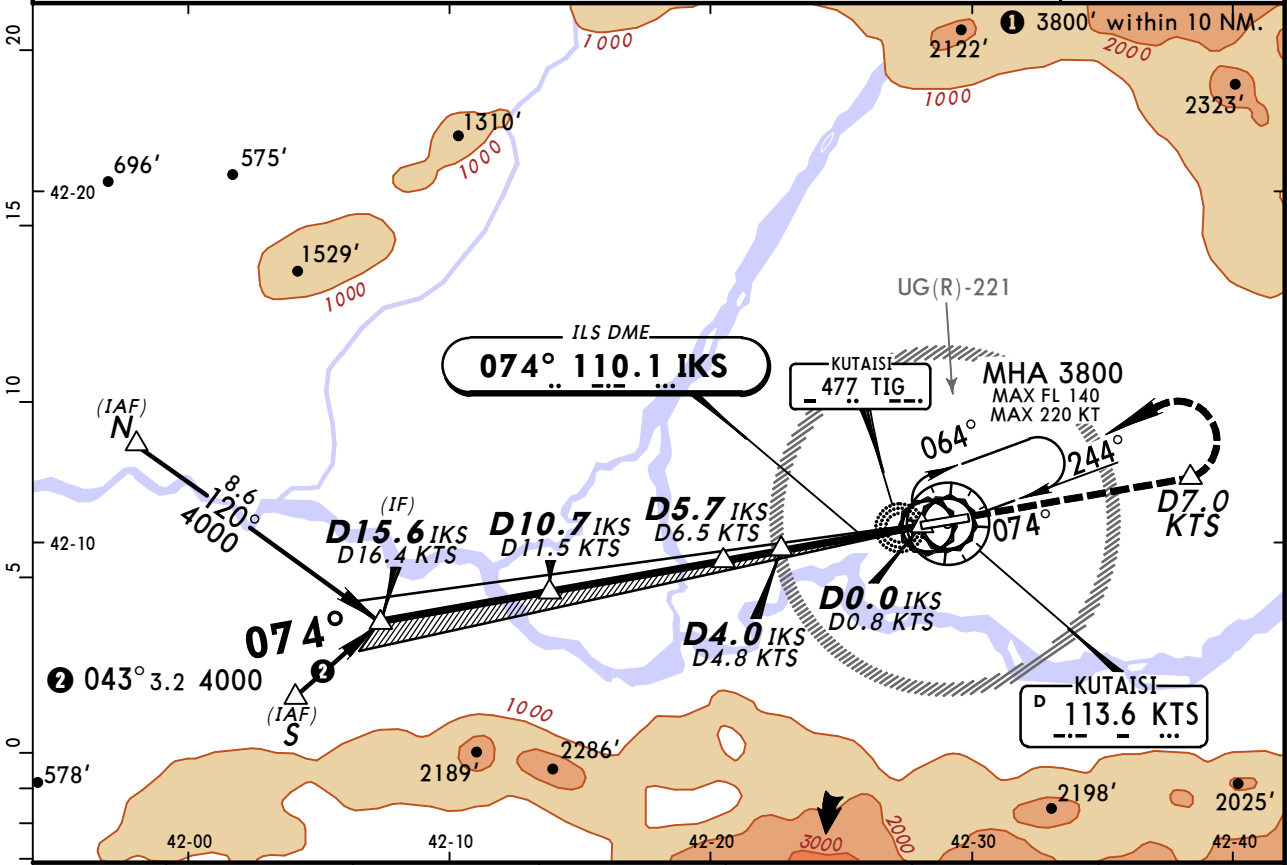
LVP must be in Force			
RL & CL	RCLM (DAY only) or RL	RCLM (DAY only) or RL	NIL (DAY only)
A			
B	200m	250m	500m
C			
D	250m	300m	

UGKO/KUT
KOPITNARI

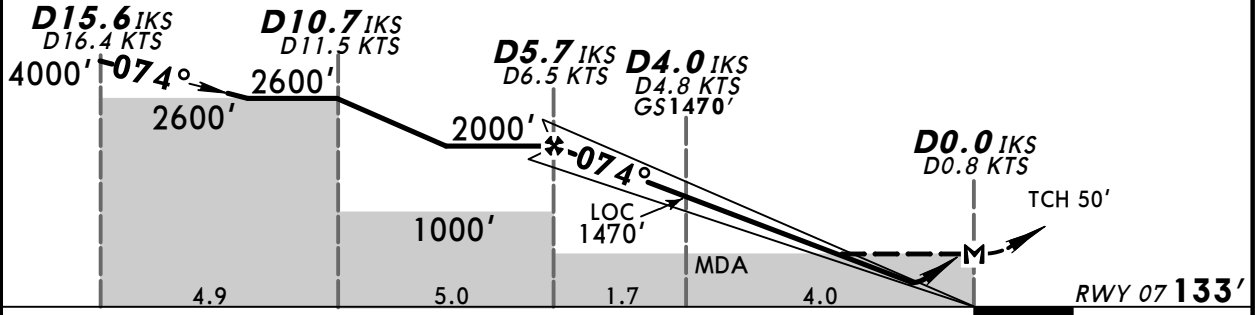
JEPPESSEN
14 JUN 13
Eff 27 Jun (11-1)

KUTAISI, GEORGIA
ILS DME Z or LOC Z Rwy 07

KUTAISI Approach				KUTAISI Tower	
127.1				125.5	
LOC IKS 110.1	Final Apch Crs 074°	GS D4.0 IKS 1470' (1337')	ILS DA(H) 333' (200')	Apt Elev 160'	RWY 133'
MISSED APCH: Climb on 074° to 3800'. At D7.0 KTS turn LEFT to VOR, then as directed. MAX 220 KT.					
Alt Set: hPa		Rwy Elev: 5 hPa	Trans level: FL 90		
ILS DME reads zero at rwy 07 threshold.					MSA KTS VOR



LOC (GS out)	KTS DME	6.0	5.0	4.0	3.0	2.0
	ALTITUDE	1850'	1530'	1210'	890'	570'



Gnd speed-Kts	70	90	100	120	140	160		220 KT MAX	D7.0 KTS on 074°
ILS GS or	372	478	531	637	743	849			
LOC Descent Angle 3.00°									
MAP at D0.0 IKS/D0.8 KTS									

JAR-OPS STRAIGHT-IN LANDING RWY 07			
ILS		LOC (GS out)	
DA(H) 333' (200')		MDA(H) 490' (357')	
FULL	ALS out	ALS out	ALS out
A		RVR 900m	RVR 1500m
B		RVR 1000m	RVR 1800m
C	RVR 550m	RVR 1000m	RVR 2000m
D		RVR 1400m	RVR 2000m

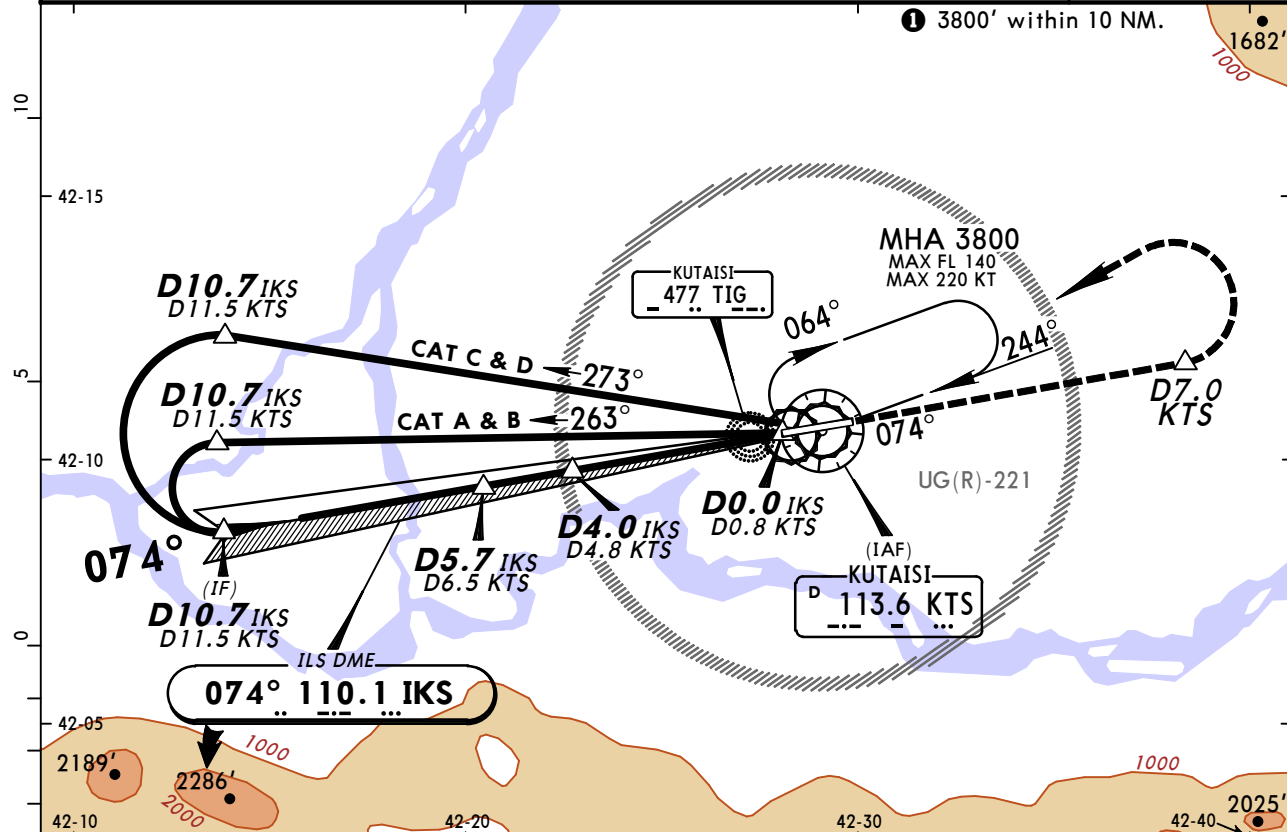
PANS OPS

UGKO/KUT
KOPITNARI

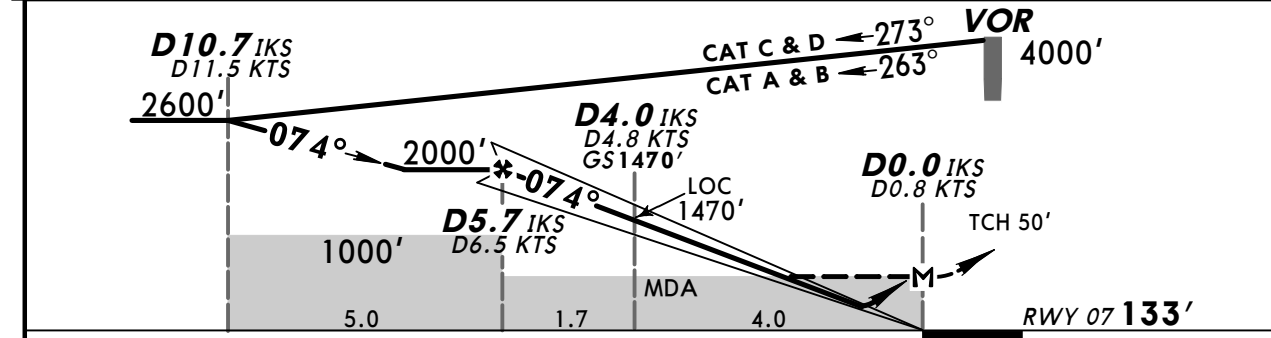
JEPPESEN
14 JUN 13
Eff 27 Jun (11-2)

KUTAISI, GEORGIA
ILS DME Y or LOC Y Rwy 07

KUTAISI Approach				KUTAISI Tower	
127.1				125.5	
LOC IKS 110.1	Final Apch Crs 074°	GS D4.0 IKS 1470' (1337')	ILS DA(H) 333' (200')	Apt Elev 160'	RWY 133'
MISSED APCH: Climb on 074° to 3800'. At D7.0 KTS turn LEFT to VOR, then as directed. MAX 220 KT.					
Alt Set: hPa		Rwy Elev: 5 hPa	Trans level: FL 90	Trans alt: 7000'	
ILS DME reads zero at rwy 07 threshold.					MSA KTS VOR



LOC (GS out)	KTS DME	6.0	5.0	4.0	3.0	2.0
	ALTITUDE	1850'	1530'	1210'	890'	570'



Gnd speed-Kts	70	90	100	120	140	160	HIALS PAPI 220 KT MAX D7.0 KTS on 074°
ILS GS or LOC Descent Angle 3.00°	372	478	531	637	743	849	
MAP at D0.0 IKS/D0.8 KTS							

JAR-OPS				STRAIGHT-IN LANDING RWY 07			
ILS		LOC (GS out)					
DA(H) 333' (200')		MDA(H) 490' (357')					
FULL	ALS out	ALS out	ALS out				
A		RVR 900m	RVR 1500m				
B		RVR 1000m	RVR 1800m				
C	RVR 550m	RVR 1000m	RVR 2000m				
D		RVR 1400m	RVR 2000m				

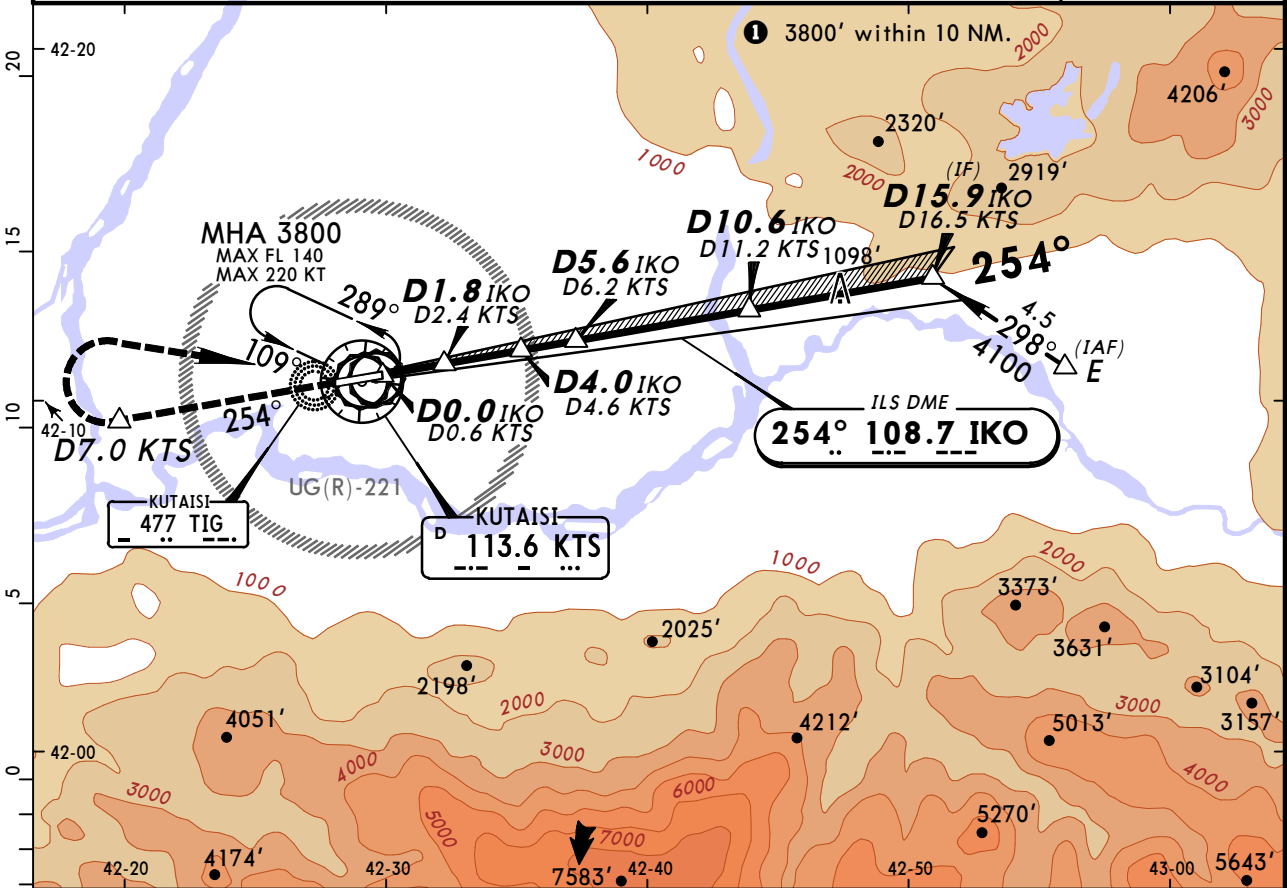
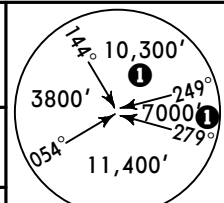
PANS OPS

UGKO/KUT KOPITNARI

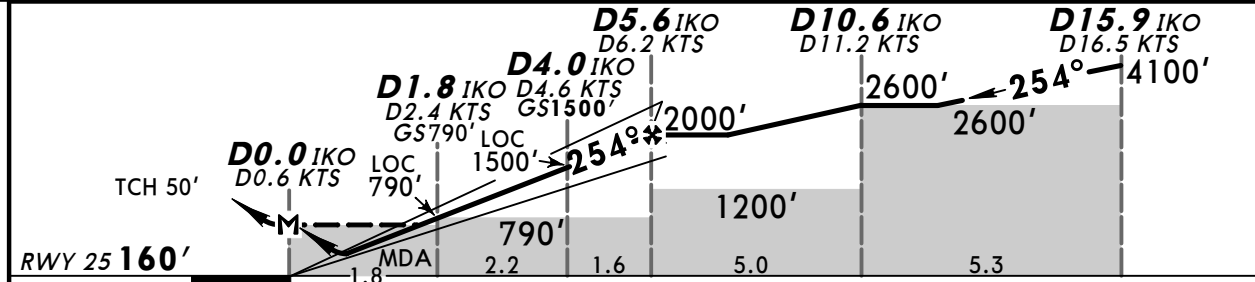
JEPPESEN
14 JUN 13
Eff 27 Jun

KUTAISI, GEORGIA ILS DME Z or LOC Z Rwy 25

KUTAISI Approach				KUTAISI Tower	
127.1				125.5	
LOC IKO 108.7	Final Apch Crs 254°	GS D4.0 IKO 1500' (1340')	ILS DA(H) 360' (200')	Apt Elev 160'	RWY 160'
MISSED APCH: Climb on 254° to 3800'. At D7.0 KTS turn RIGHT to VOR, then as directed. MAX 220 KT.					
Alt Set: hPa		Rwy Elev: 6 hPa	Trans level: FL 90		Trans alt: 7000'
ILS DME reads zero at rwy 25 threshold.					MSA KTS VOR



LOC	KTS DME	1.0	2.0	3.0	4.0	5.0	6.0
(GS out)	ALTITUDE	340'	660'	980'	1300'	1610'	1930'



Gnd speed-Kts	70	90	100	120	140	160	HIALS PAPI	220 KT MAX	D7.0 KTS on 254°
ILS GS or LOC Desc Angle 3.00°	372	478	531	637	743	849			
MAP at D0.0 IKO/D0.6 KTS									

JAR-OPS				STRAIGHT-IN LANDING RWY 25			
ILS DA(H) 360' (200')		LOC (GS out) MDA(H) 510' (350')					
FULL	ALS out	ALS out	ALS out				
A			RVR 900m				
B			RVR 1000m			RVR 1500m	
C	RVR 550m	RVR 1000m	RVR 1000m			RVR 1800m	
D			RVR 1400m			RVR 2000m	

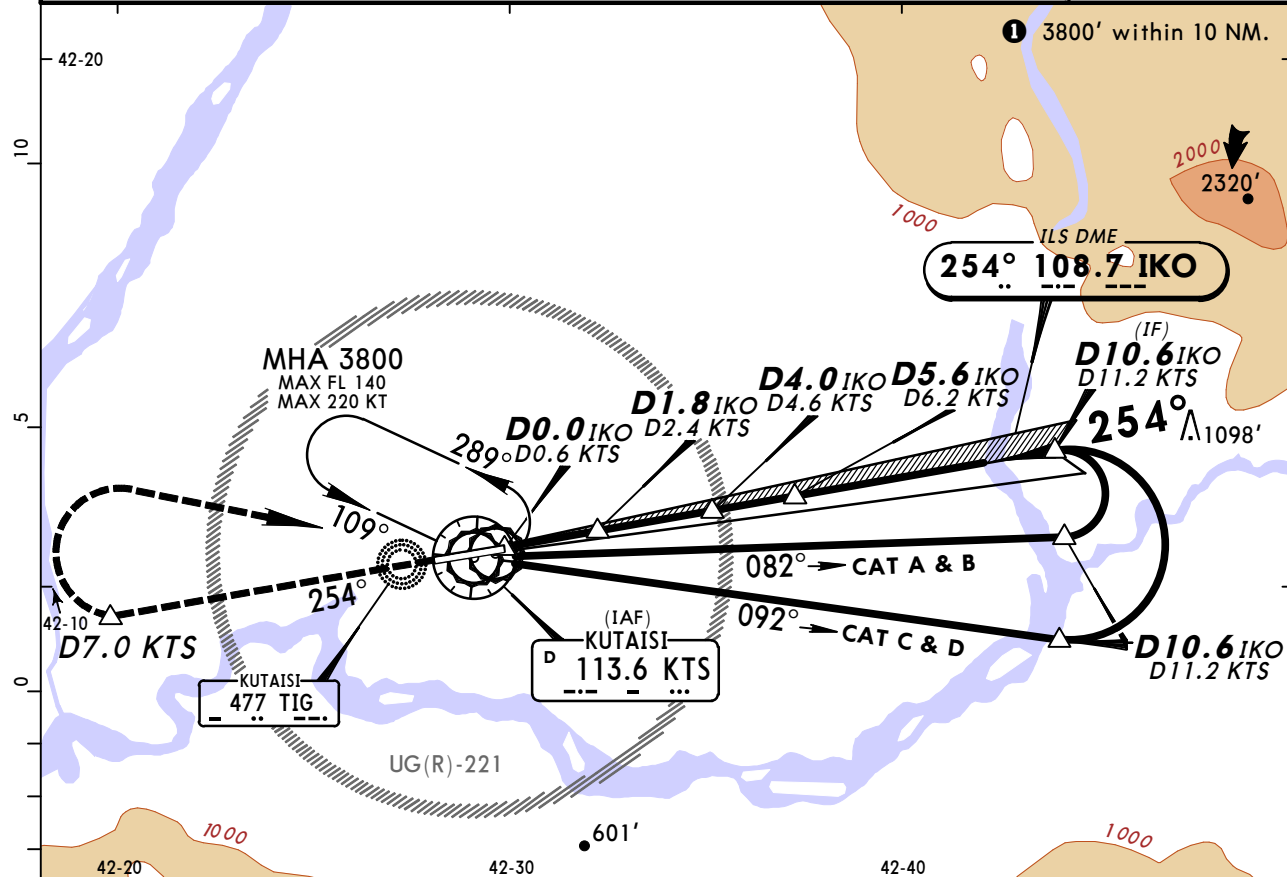
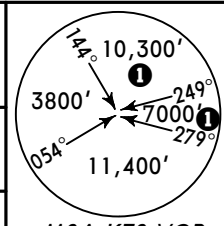
PANS OPS

UGKO/KUT KOPITNARI

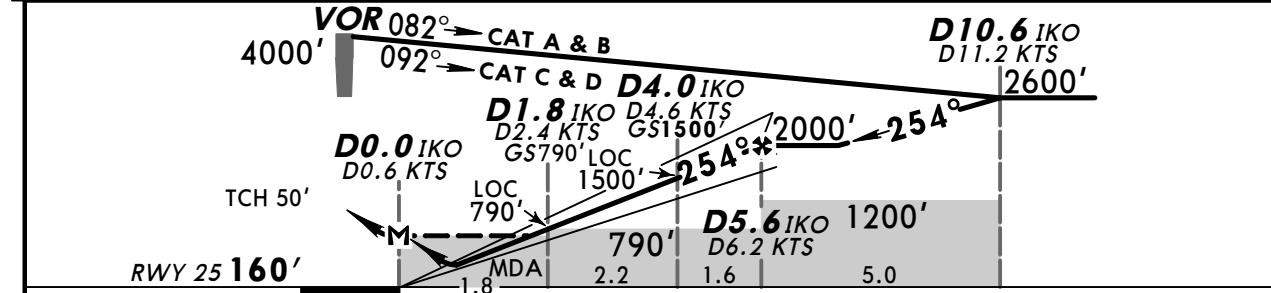
JEPPESEN
14 JUN 13
Eff 27 Jun

KUTAISI, GEORGIA ILS DME Y or LOC Y Rwy 25

KUTAISI Approach				KUTAISI Tower	
127.1				125.5	
LOC IKO 108.7	Final Apch Crs 254°	GS D4.0 IKO 1500' (1340')	ILS DA(H) 360' (200')	Apt Elev 160'	RWY 160'
MISSED APCH: Climb on 254° to 3800'. At D7.0 KTS turn RIGHT to VOR, then as directed. MAX 220 KT.					
Alt Set: hPa		Rwy Elev: 6 hPa	Trans level: FL 90		Trans alt: 7000'
ILS DME reads zero at rwy 25 threshold.					MSA KTS VOR



LOC (GS out)	KTS DME	1.0	2.0	3.0	4.0	5.0	6.0
	ALTITUDE	340'	660'	980'	1300'	1610'	1930'



Gnd speed-Kts	70	90	100	120	140	160	HIALS PAPI	220 KT MAX	D7.0 KTS on 254°
ILS GS or LOC Descent Angle 3.00°	372	478	531	637	743	849			
MAP at D0.0 IKO/D0.6 KTS									

JAR-OPS		STRAIGHT-IN LANDING RWY 25	
ILS DA(H) 360' (200')		LOC (GS out) MDA(H) 510' (350')	
FULL	ALS out	FULL	ALS out
A		RVR 900m	RVR 1500m
B		RVR 1000m	RVR 1800m
C	RVR 550m	RVR 1000m	RVR 2000m
D	RVR 1000m	RVR 1400m	RVR 2000m

PANS OPS

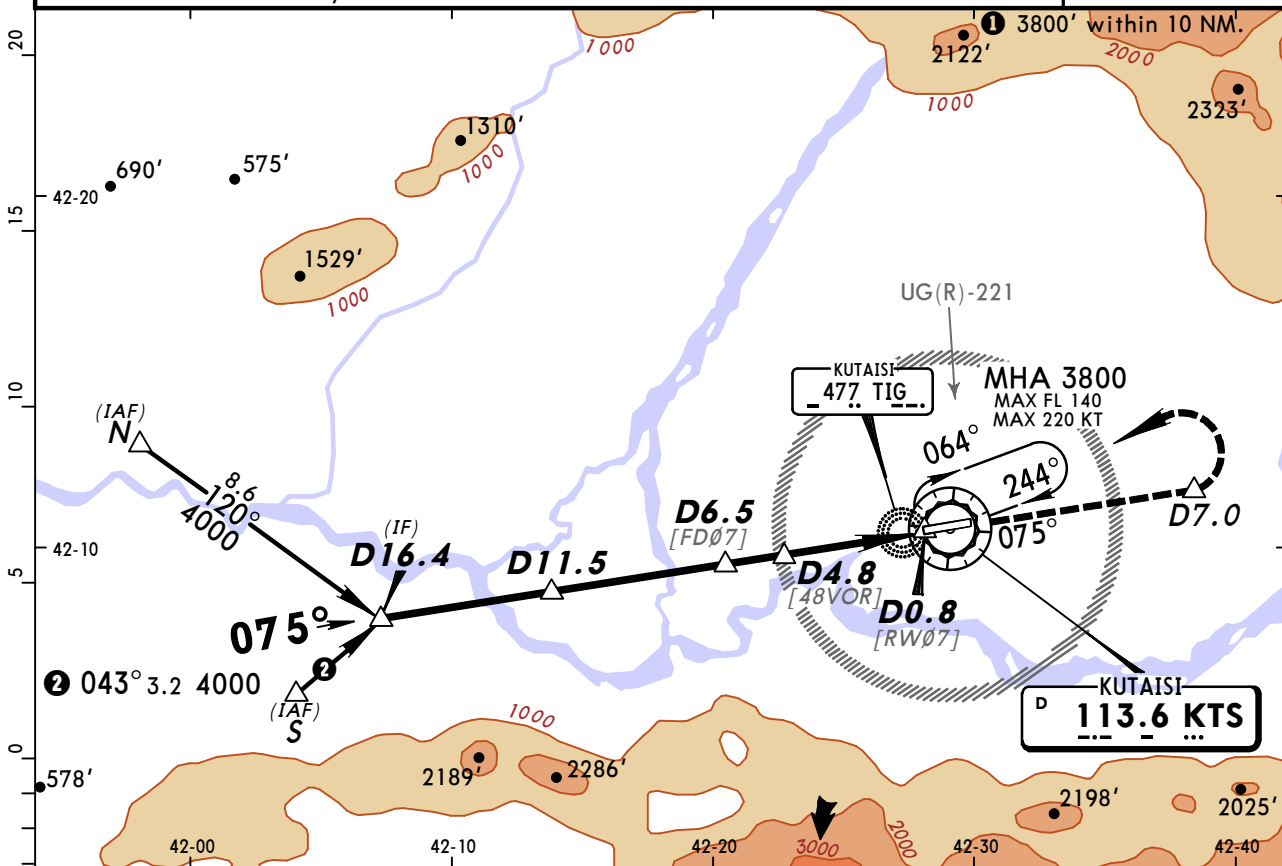
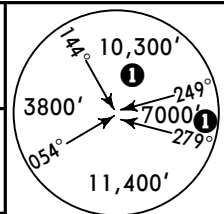
UGKO/KUT
KOPI TNARI

JEPPESEN

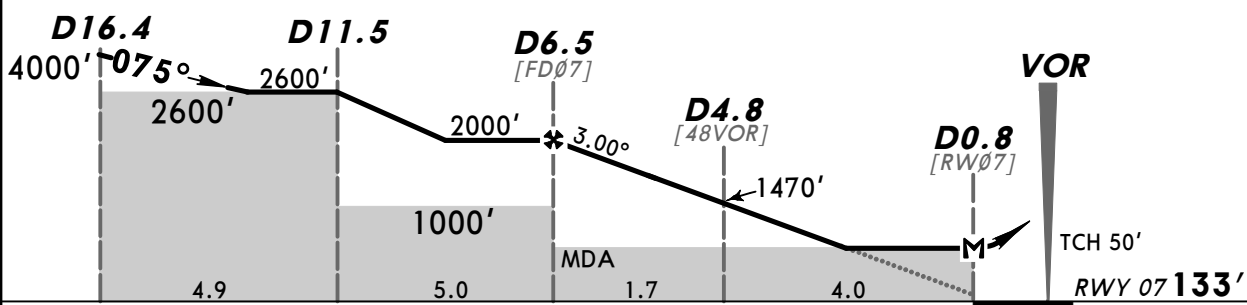
14 JUN 13 (13-1) Eff 27 Jun

KUTAISI, GEORGIA
VOR DME Z Rwy 07

KUTAISI Approach			KUTAISI Tower		
127.1			125.5		
VOR KTS 113.6	Final Apch Crs 075°	Procedure Alt D6.5 2000' (1867')	MDA(H) 570' (437')	Apt Elev 160'	RWY 133'
MISSED APCH: Climb on R-075 to 3800'. At D7.0 turn LEFT to VOR, then as directed. MAX 220 KT.					
Alt Set: hPa		Rwy Elev: 5 hPa	Trans level: FL 90		Trans alt: 7000'



KTS DME	6.0	5.0	4.0	3.0	2.0
ALTITUDE	1850'	1530'	1210'	890'	570'



Gnd speed-Kts	70	90	100	120	140	160	HIALS PAPI 220 KT MAX D7.0 ↑ KTS on 113.6 R-075
Descent Angle	3.00°	372	478	531	637	743	
MAP at D0.8							

JAR-OPS		STRAIGHT-IN LANDING RWY 07	
MDA(H) 570' (437')		ALS out	
A	RVR 900m	RVR 1500m	
B	RVR 1000m	RVR 1800m	
C	RVR 1400m	RVR 2000m	

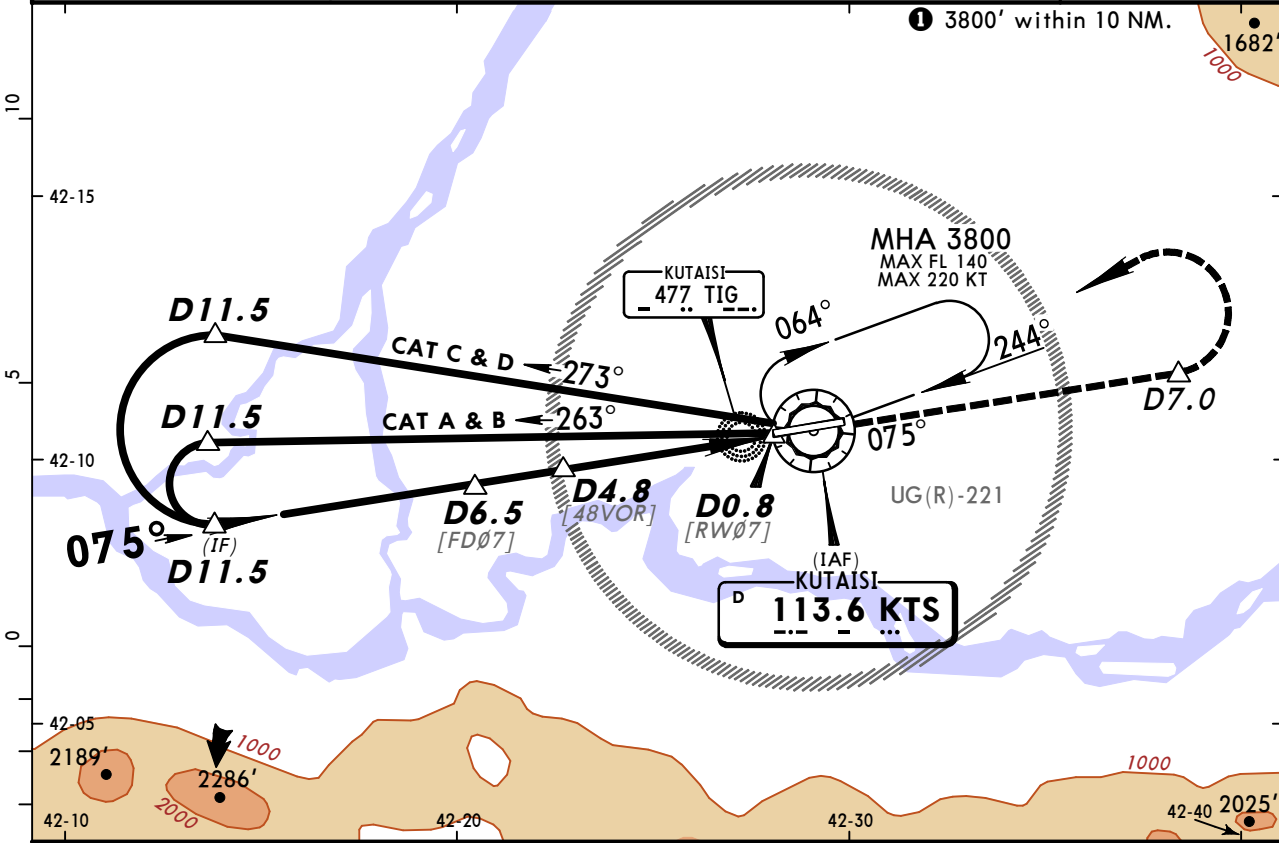
PANS OPS

UGKO/KUT
KOPITNARI

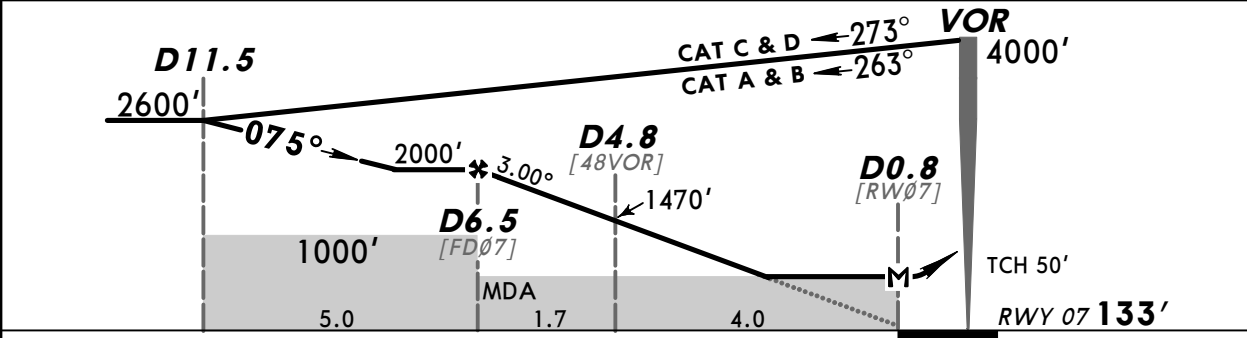
JEPPESSEN
14 JUN 13 (13-2) Eff 27 Jun

KUTAISI, GEORGIA
VOR DME Y Rwy 07

KUTAISI Approach				KUTAISI Tower	
127.1				125.5	
VOR KTS 113.6	Final Apch Crs 075°	Procedure Alt D6.5 2000' (1867')	MDA(H) 570' (437')	Apt Elev 160'	RWY 133'
MISSED APCH: Climb on R-075 to 3800'. At D7.0 turn LEFT to VOR, then as directed. MAX 220 KT.					
Alt Set: hPa	Rwy Elev: 5 hPa	Trans level: FL 90	Trans alt: 7000'	MSA KTS VOR	



KTS DME	6.0	5.0	4.0	3.0	2.0
ALTITUDE	1850'	1530'	1210'	890'	570'



Gnd speed-Kts	70	90	100	120	140	160	HIALS PAPI 220 KT MAX D7.0 ↑ KTS on 113.6 R-075
Descent Angle	3.00°	372	478	531	637	743	
MAP at D0.8							

JAR-OPS		STRAIGHT-IN LANDING RWY 07	
MDA(H) 570' (437')		ALS out	
A	RVR 900m	RVR 1500m	
B	RVR 1000m	RVR 1800m	
C	RVR 1400m	RVR 2000m	

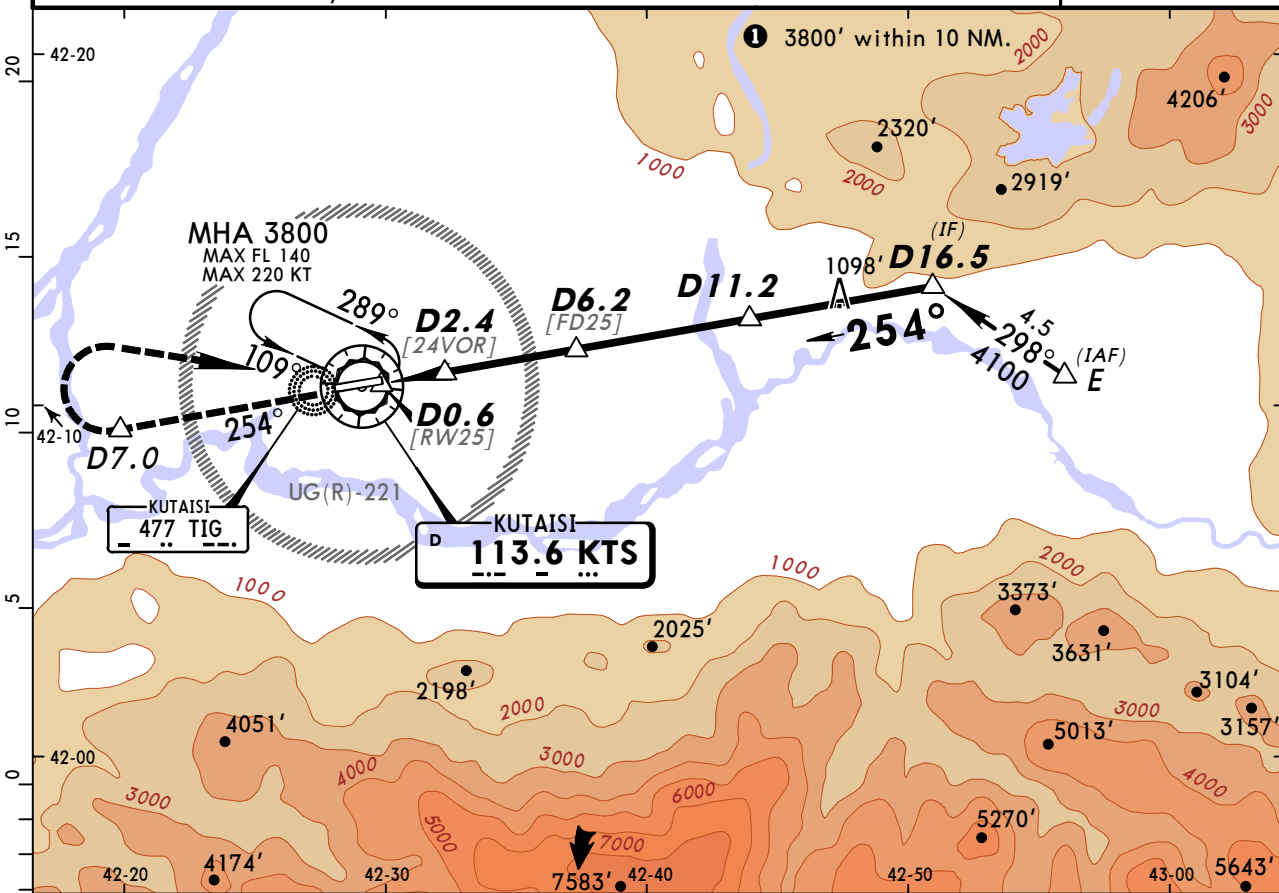
PANS OPS

UGKO/KUT KOPITNARI

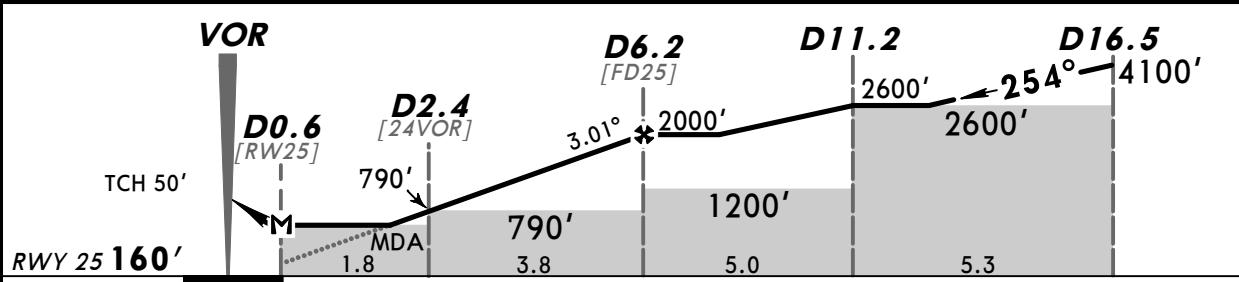
JEPPESEN
14 JUN 13 **(13-3)** Eff 27 Jun

KUTAISI, GEORGIA VOR DME Z Rwy 25

KUTAISI Approach			KUTAISI Tower		
127.1			125.5		
VOR KTS 113.6	Final Apch Crs 254°	Procedure Alt D6.2 2000' (1840')	MDA(H) 510' (350')	Apt Elev 160'	RWY 160'
MISSED APCH: Climb on R-254 to 3800'. At D7.0 turn RIGHT to VOR, then as directed. MAX 220 KT.					
Alt Set: hPa	Rwy Elev: 6 hPa	Trans level: FL 90	Trans alt: 7000'	MSA KTS VOR	



KTS DME	2.0	3.0	4.0	5.0	6.0
ALTITUDE	660'	980'	1300'	1610'	1930'



Gnd speed-Kts	70	90	100	120	140	160	HIALS PAPI 220 KT MAX D7.0 ↑ KTS 113.6 R-254
Descent angle	3.01°	373	479	532	639	745	
MAP at D0.6							

JAR-OPS		STRAIGHT-IN LANDING RWY 25	
MDA(H) 510' (350')		ALS out	
A	RVR 900m	RVR 1500m	
B	RVR 1000m	RVR 1800m	
C	RVR 1400m	RVR 2000m	

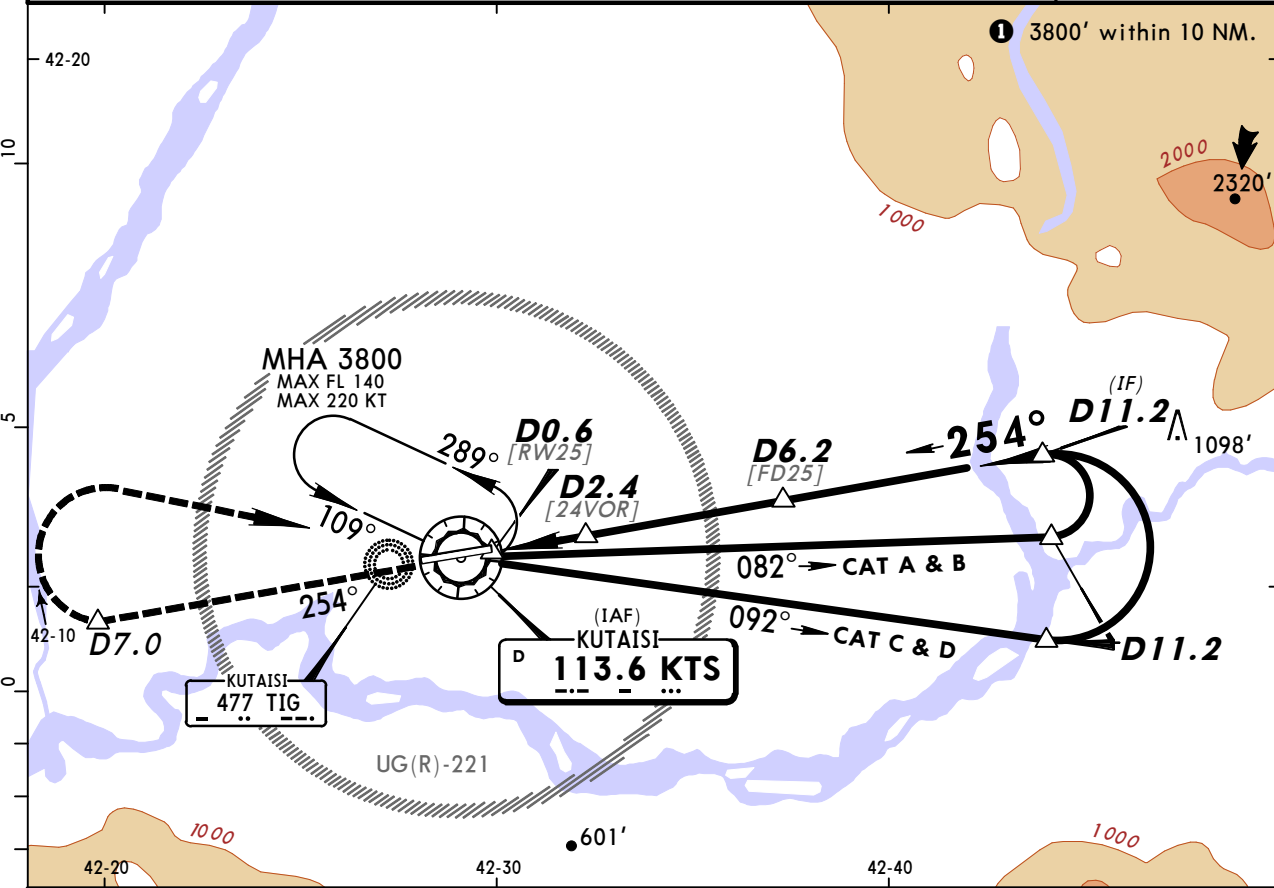
PANS OPS

UGKO/KUT KOPITNARI

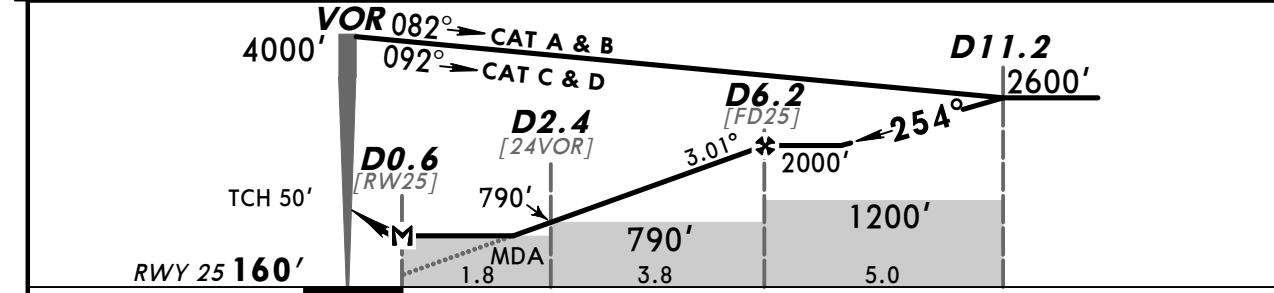
JEPPESEN
14 JUN 13 **13-4** **Eff 27 Jun**

KUTAISI, GEORGIA VOR DME Y Rwy 25

KUTAISI Approach				KUTAISI Tower	
127.1				125.5	
VOR KTS 113.6	Final Apch Crs 254°	Procedure Alt D6.2 2000' (1840')	MDA(H) 510' (350')	Apt Elev 160'	RWY 160'
MISSED APCH: Climb on R-254 to 3800'. At D7.0 turn RIGHT to VOR, then as directed. MAX 220 KT.					
Alt Set: hPa	Rwy Elev: 6 hPa	Trans level: FL 90	Trans alt: 7000'	MSA KTS VOR	



KTS DME	2.0	3.0	4.0	5.0	6.0
ALTITUDE	660'	980'	1300'	1610'	1930'



Gnd speed-Kts	70	90	100	120	140	160	HIALS PAPI 220 KT MAX D7.0 ↑ KTS on 113.6 R-254
Descent Angle	3.01°	373	479	532	639	745	
MAP at D0.6							

JAR-OPS		STRAIGHT-IN LANDING RWY 25	
MDA(H) 510' (350')		ALS out	
A	RVR 900m	RVR 1500m	
B	RVR 1000m	RVR 1800m	
C	RVR 1400m	RVR 2000m	

TERMINAL CHART CHANGE NOTICES

No Chart Change Notices for Airport UGKO