

GENERAL

Operational Hours

ATS Hours / AD ADMIN Hours: H24

Airport Information

RFF: CAT 5, CAT 7 O/R
Fuel: TS-1
PCN: RWY 13/31: 35/F/B/X/T

Operation

RWY Restriction
 RWY 13 not AVBL for TKOF.
Taxi/Parking
 Visual docking guidance system AVBL.
 Nose-in guidance at ACFT stands.

ARRIVAL

Speed

MAX IAS 250KT within TMA below FL110.

Communication

COM Failure: See CRAR.

Warnings

Do not confuse municipal road with RWY 13 approx. 160m / 525ft left of RWY centerline.

DEPARTURE

Take-off Minima

RWY		31	
All ACFT	ft - m/km	0 - 400V	-
RWY		13	
All ACFT	ft - m/km	Not applicable	-

Speed

MAX IAS 250KT within TMA below FL110.

Communication

COM Failure: See CRAR.

ATC Slot, Clearance

TKOF within 1min after CLR from ATC, if mentioned time interval passed, REQ new CLR.

De-Icing

AVBL.

Effective 21-JUN-2018

14-JUN-2018

BUS-UGSB

2-10

Georgia Batumi

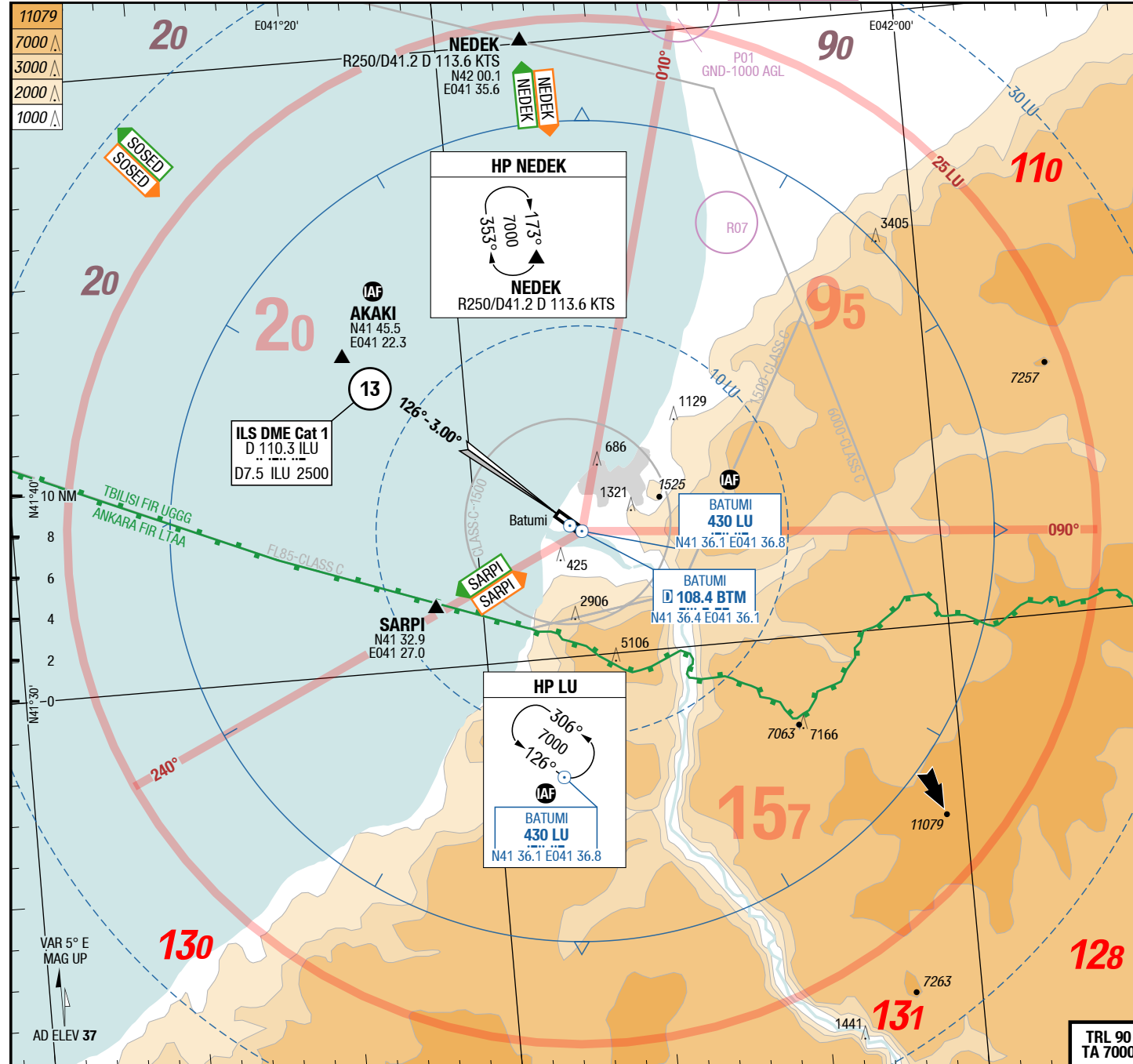
AGC
AFC

AFC

AFC

Batumi Georgia

AGC
AFC



APP 124.425
TWR 118.600

Landing RWY system:

13 210
HL-N THR 17 (1hPa) / TDZ 20 (---%) +0.2%

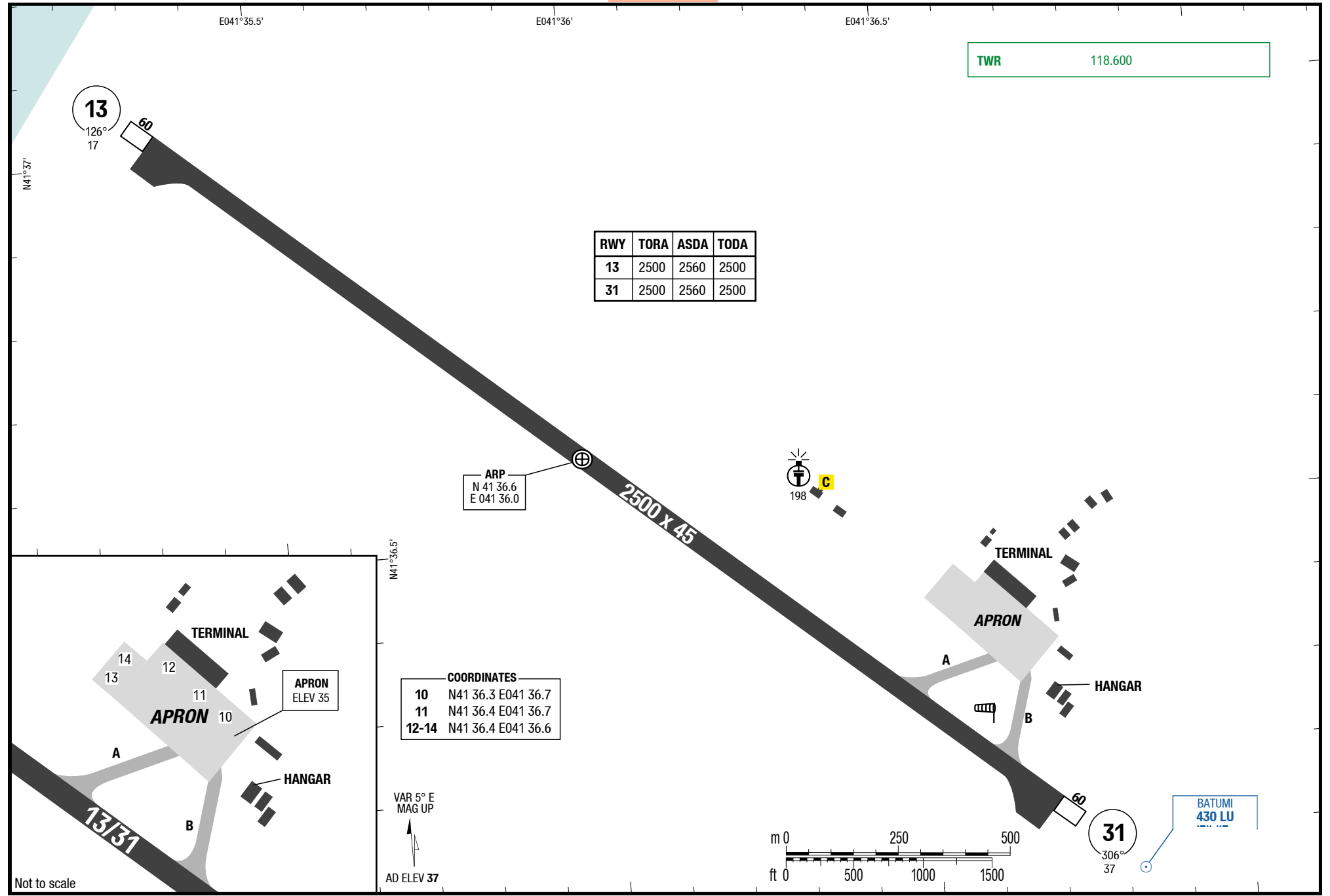
60 HL
30 HL 45 x 2500

-0.2% TDZ --- (---%) / THR 37 (1hPa)

31

Changes: Completely revised

3-20



Not to scale

Changes: APN ELEV, RWY ELEV, AD ELEV

Effective 21-JUN-2018

14-JUN-2018

BUS-UGSB

4-10

Georgia Batumi

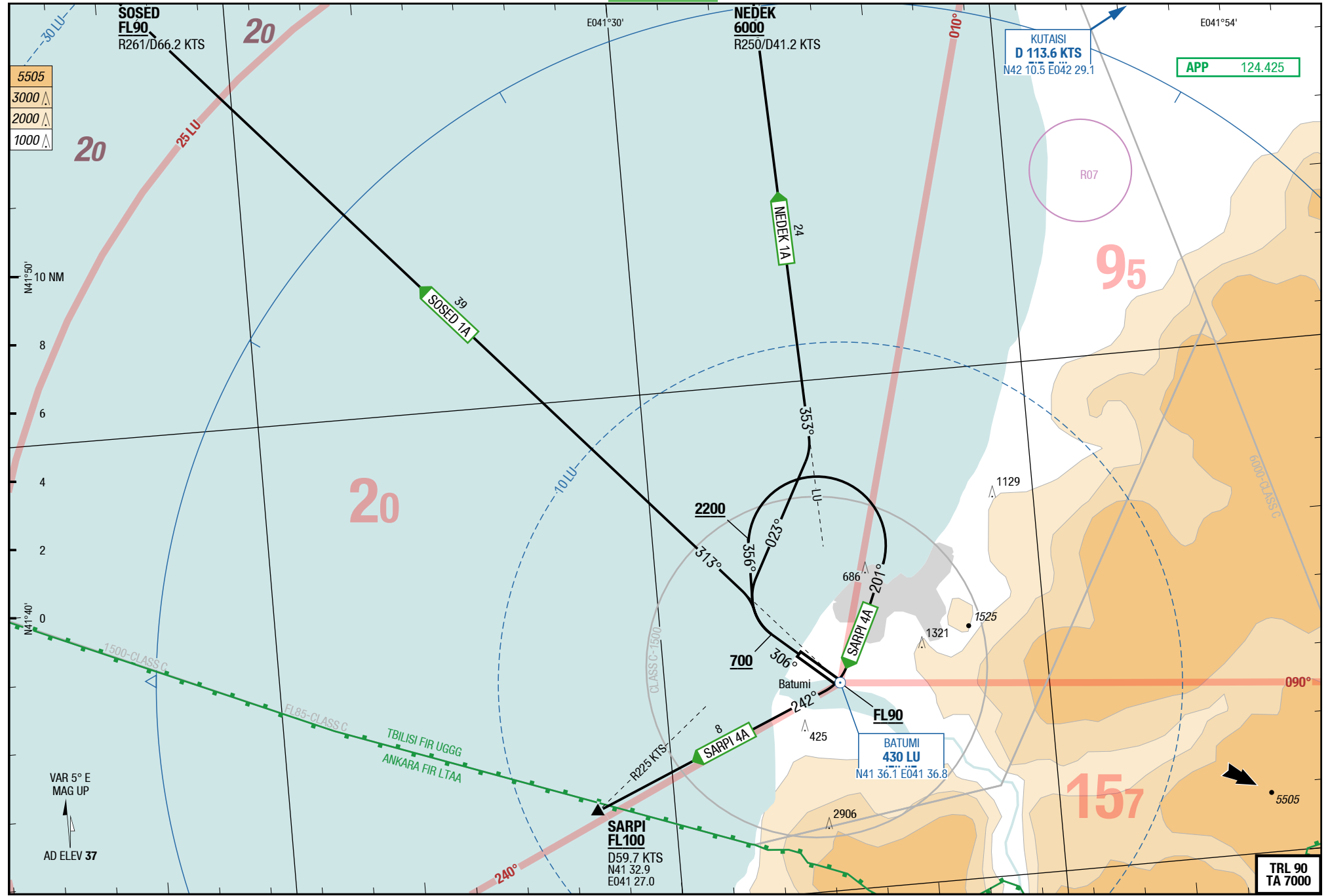
NIL
SIDs

SID

SID

Batumi Georgia

NIL
SIDs



Changes: Completely revised

© Lido 2018

NEDEK 1A / SARPI 4A / SOSED 1A

RWY 31 (306°)

	GS	120	150	180	210	240	270
4.0%	ft/MIN	500	700	800	900	1000	1100

DESIGNATOR	ROUTING	ALTITUDES
	Runway 31	
NEDEK 1A 124.425	at MNM 700 RT 023° - intercept QDR 353 LU to NEDEK	NEDEK MNM 6000
SARPI 4A 4.0% 124.425	at MNM 700 RT 356° - at MNM 2200 RT direct LU - 242° to SARPI	LU MNM FL90 SARPI MNM FL100
SOSED 1A 124.425	at MNM 700 RT 023° - intercept QDR 313 LU to SOSED	SOSED MNM FL90

Effective 21-JUN-2018

14-JUN-2018

BUS-UGSB

6-10

Georgia Batumi

NIL

STARs

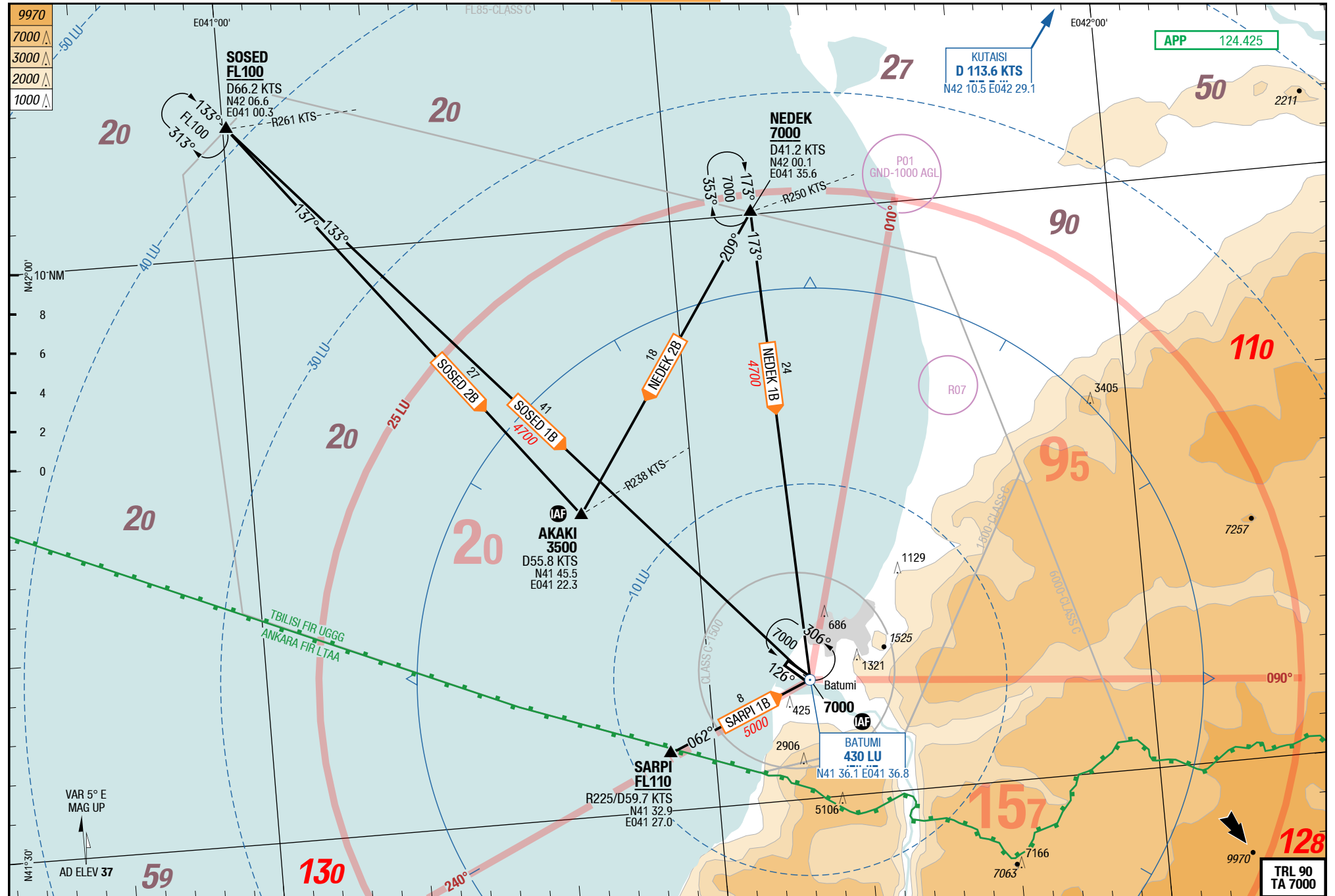
STAR

STAR

Batumi Georgia

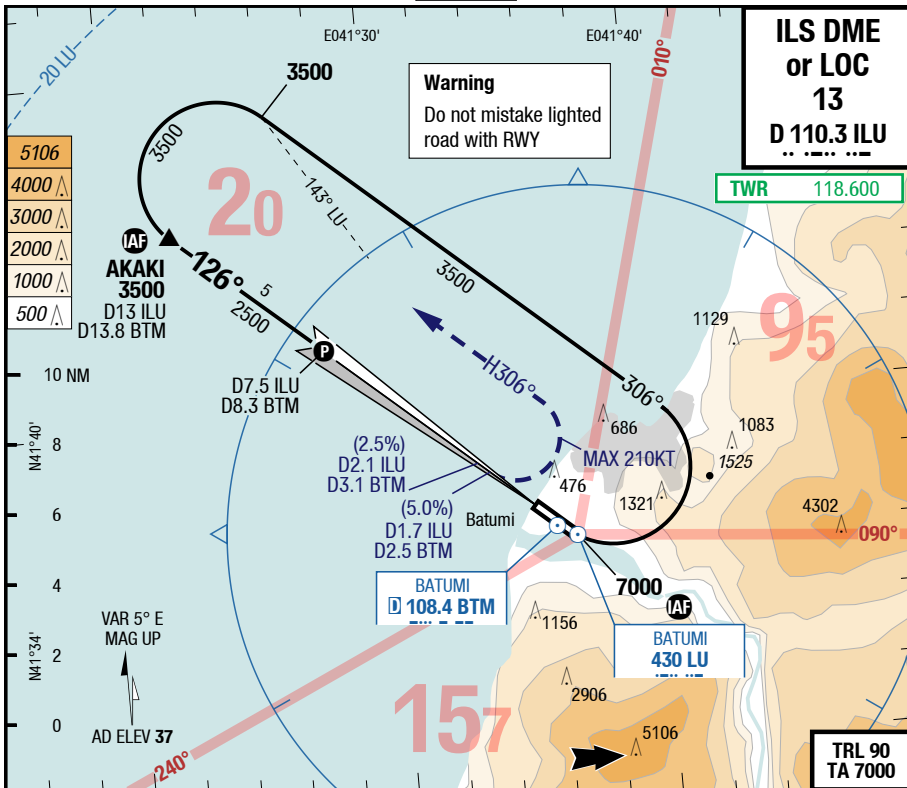
NIL

STARs

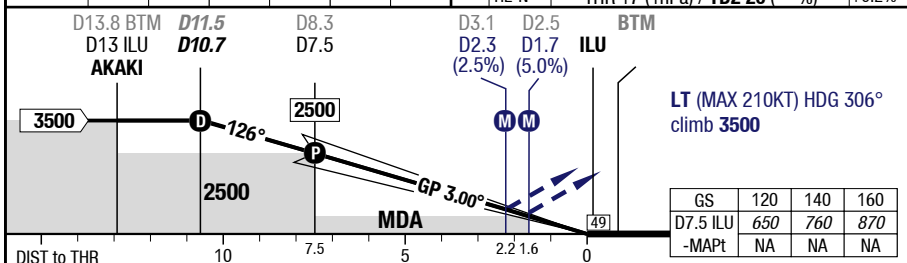


Changes: MGA, OBST, SUAs, AD ELEV

© Lido 2018



LOC 3.00° D ILU	10.7	9	6	5	4	3		83.0° 2500 x 45 60 HL 30 HL
	3500	2980	2000	1680	1350	1030		



13		Cat 1 DME GA 5.0% 1)	Cat 1 DME GA 2.5% 2)	LOC DME GA 5.0%	LOC DME GA 2.5%	Circling
C	ft - m/km ft	560 - 2.3 580	690 - 2.4 710	560 - 2.3 580	760 - 2.4 780	Not published
D	ft - m/km ft	560 - 2.3 580	690 - 2.4 710	560 - 2.3 580	760 - 2.4 780	Not published

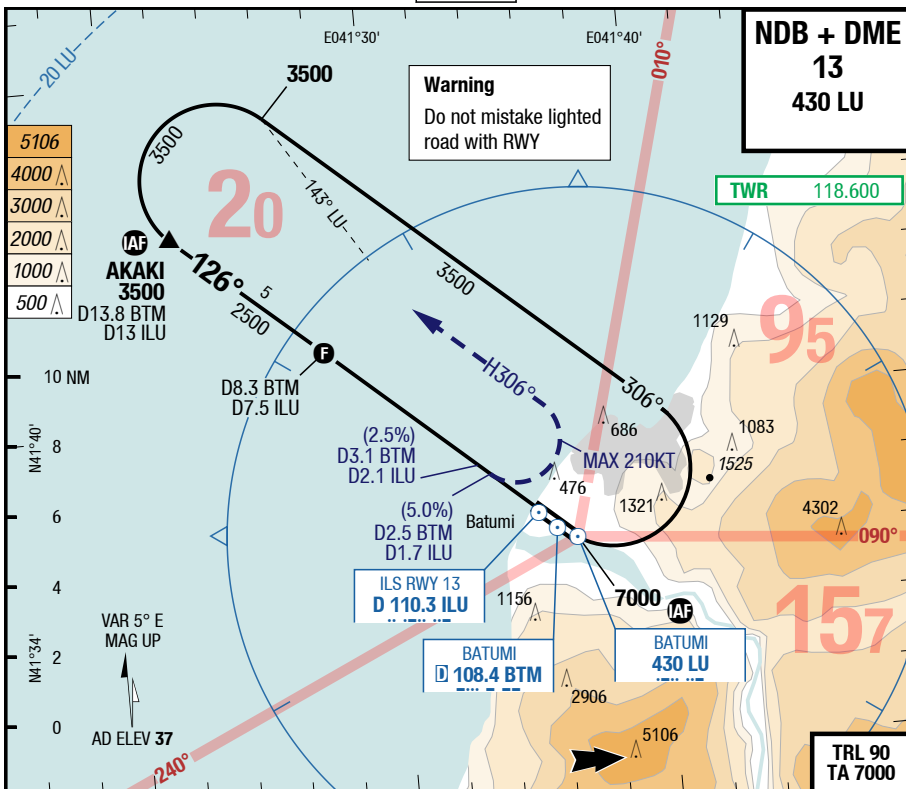
1) With EVS 1.5km
2) With EVS 1.6km

14-JUN-2018

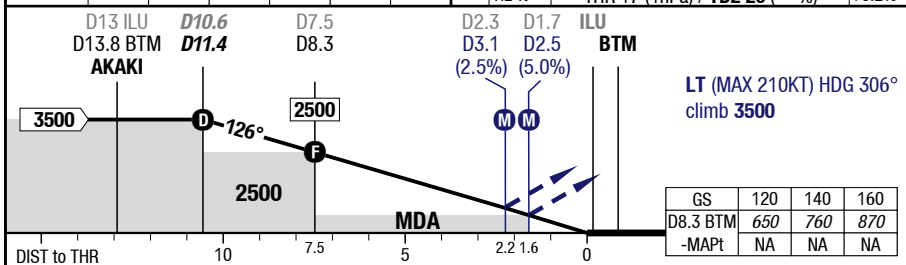
BUS-UGSB

7-20

NDB + DME 13



3.00° D BTM	11.4	9	7	6	5	4	
	3500	2720	2070	1740	1420	1090	



13		NDB DME GA 5.0%	NDB DME GA 2.5%			Circling
	C	ft - m/km ft	560 - 2.3 580	760 - 2.4 780		Not published
	D	ft - m/km ft	560 - 2.3 580	760 - 2.4 780		Not published

Changes: new

Effective 21-JUN-2018

14-JUN-2018

BUS-UGSB

8-10

Georgia Batumi

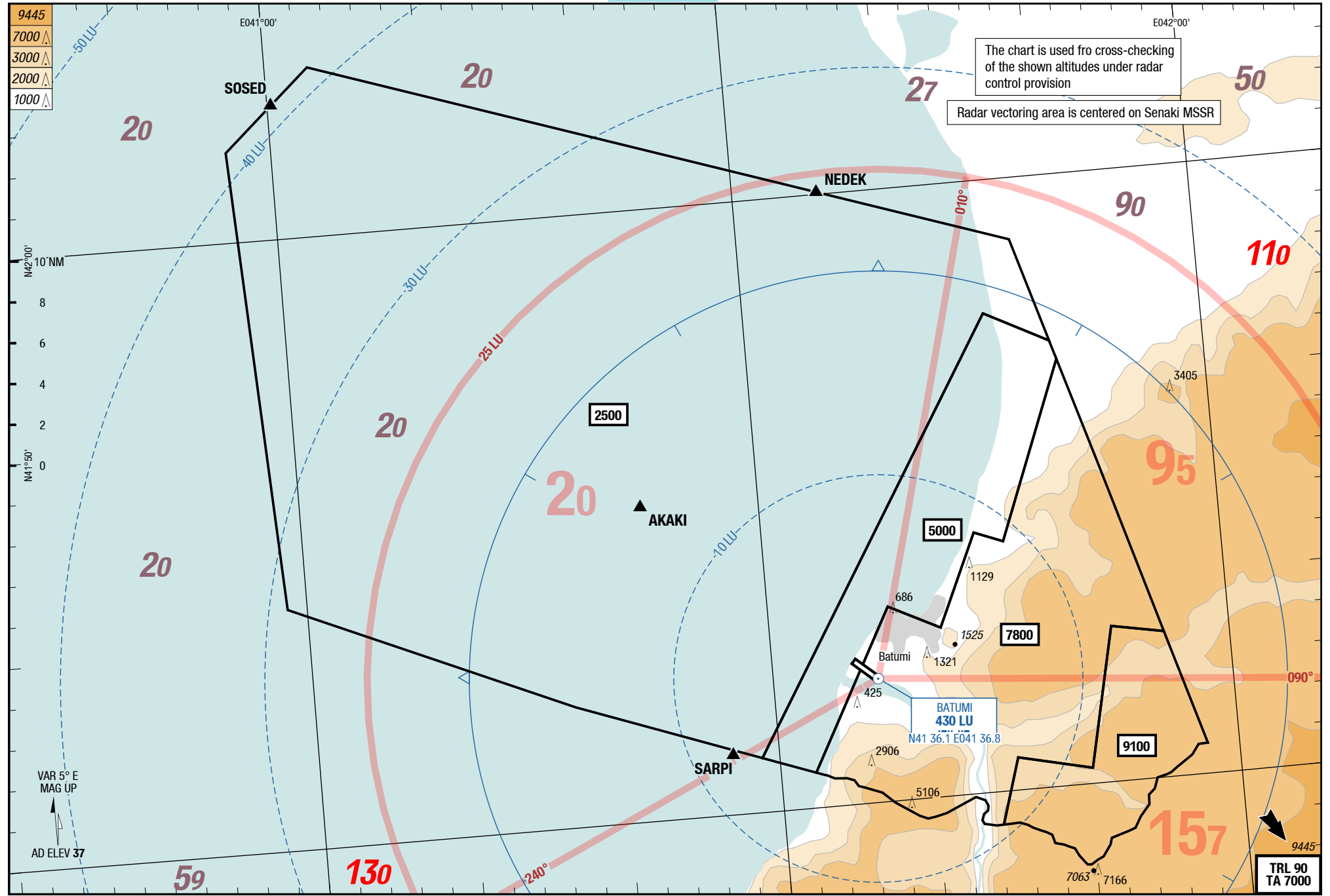
NIL
MRC

MRC

MRC

Batumi Georgia

NIL
MRC



Changes: Completely revised

© Lido 2018