

General Information

Location: MALE MDV
ICAO/IATA: VRMM / MLE
Lat/Long: N04° 11.50', E073° 31.75'
Elevation: 6 ft

Airport Use: Public
Daylight Savings: Not Observed
UTC Conversion: -5:00 = UTC
Magnetic Variation: 3.0° W

Fuel Types: Jet A-1
Customs: Yes
Airport Type: IFR
Landing Fee: Yes
Control Tower: Yes
Jet Start Unit: No
LLWS Alert: No
Beacon: Yes

Sunrise: 0121 Z
Sunset: 1316 Z

Runway Information

Runway: 18
Length x Width: 10499 ft x 148 ft
Surface Type: asphalt
TDZ-Elev: 6 ft
Lighting: Edge
Displaced Threshold: 328 ft

Runway: 36
Length x Width: 10499 ft x 148 ft
Surface Type: asphalt
TDZ-Elev: 6 ft
Lighting: Edge, ALS
Displaced Threshold: 952 ft

Communication Information

ATIS: 125.500
Male Tower: 118.100
Male Ground: 121.600
Male Approach: 119.700
Male North/South Control: 123.900
Male North/South Control: 127.100

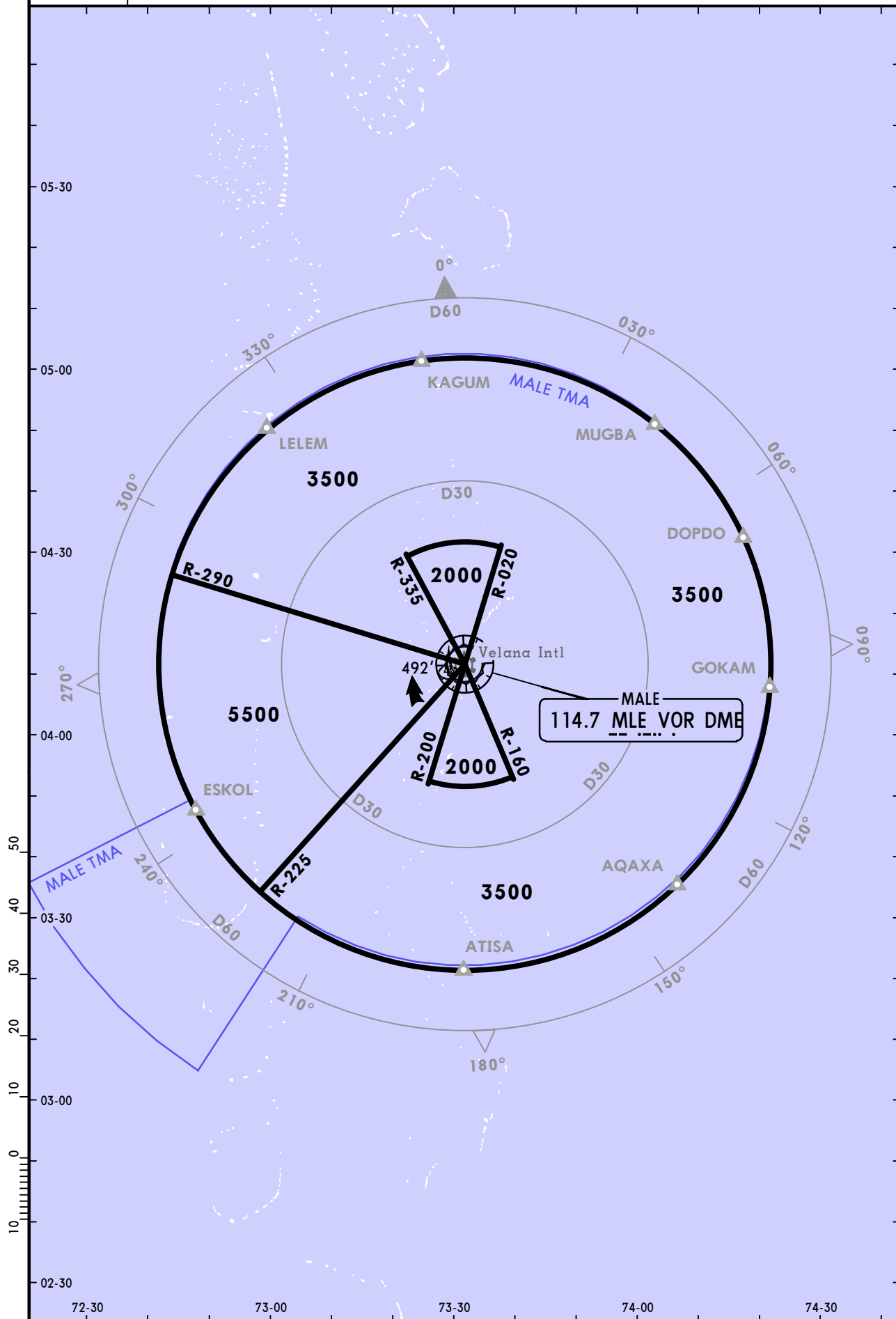
VRMM/MLE
VELANA INTL

JEPPESEN
20 OCT 17 **(10-1R)**

MALE, MALDIVES
RADAR MINIMUM ALTITUDES

Apt Elev
6'

- Alt Set: hPa Trans level: FL130 Trans alt: 11000'
1. This chart may only be used for cross-checking of altitudes assignd when in receipt of an ATC surveillance service.
 2. The published minimum altitudes are applicable only during day time, related to high density of VFR traffic within MALE TMA. At night the minimum altitude within MALE TMA is 3000'.



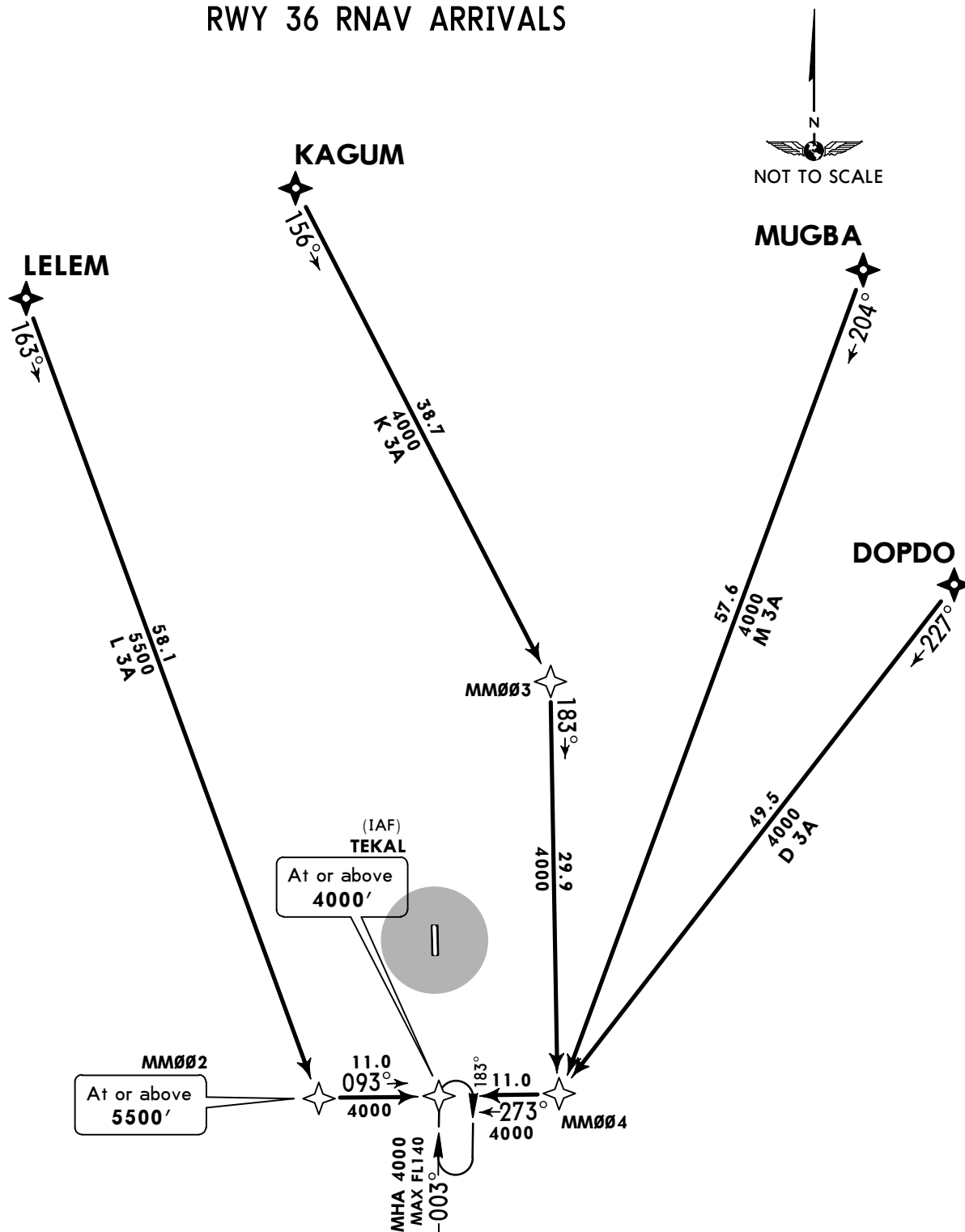
VRMM/MLE
VELANA INTL

JEPPESSEN
20 OCT 17 **10-2**

MALE, MALDIVES
RNAV STAR

ATIS 125.5	Apt Elev 6'	Alt Set: hPa Trans level: FL130 Trans alt: 11000' 1. RNAV 1. 2. GNSS required. 3. Request and obtain ATC approval before passing TMA boundary. 4. EXPECT RADAR vectoring. 5. If unable to comply inform ATC.	<div style="border: 1px solid black; border-radius: 50%; width: 60px; height: 60px; margin: 0 auto; display: flex; align-items: center; justify-content: center;"> 1500' </div> MSA ARP
----------------------	-----------------------	--	--

**DOPDO 3A (D 3A), KAGUM 3A (K 3A)
LELEM 3A (L 3A), MUGBA 3A (M 3A)
RWY 36 RNAV ARRIVALS**



STAR	ROUTING
D 3A	DOPDO - MM004 - TEKAL (4000'+).
K 3A	KAGUM - MM003 - MM004 - TEKAL (4000'+).
L 3A	LELEM - MM002 (5500'+) - TEKAL (4000'+).
M 3A	MUGBA - MM004 - TEKAL (4000'+).

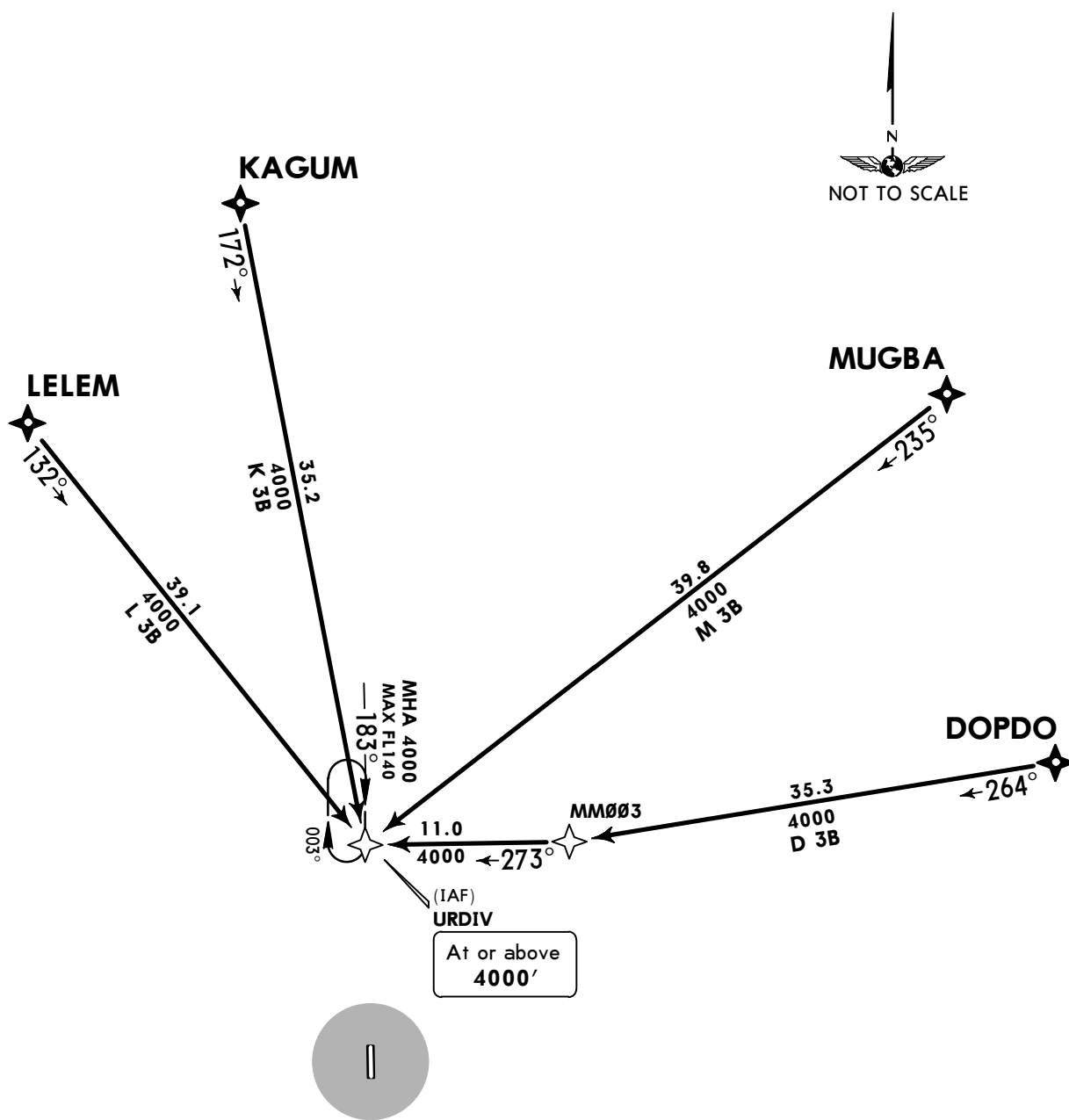
VRMM/MLE
VELANA INTL

JEPPESSEN
20 OCT 17 **(10-2A)**

MALE, MALDIVES
RNAV STAR

ATIS 125.5	Apt Elev 6'	Alt Set: hPa Trans level: FL130 Trans alt: 11000' 1. RNAV 1. 2. GNSS required. 3. Request and obtain ATC approval before passing TMA boundary. 4. EXPECT RADAR vectoring. 5. If unable to comply inform ATC.	<div style="border: 1px solid black; border-radius: 50%; width: 80px; height: 80px; margin: 0 auto; display: flex; align-items: center; justify-content: center;"> 1500' </div> MSA ARP
----------------------	-----------------------	--	--

DOPDO 3B (D 3B), KAGUM 3B (K 3B)
LELEM 3B (L 3B), MUGBA 3B (M 3B)
RWY 18 RNAV ARRIVALS



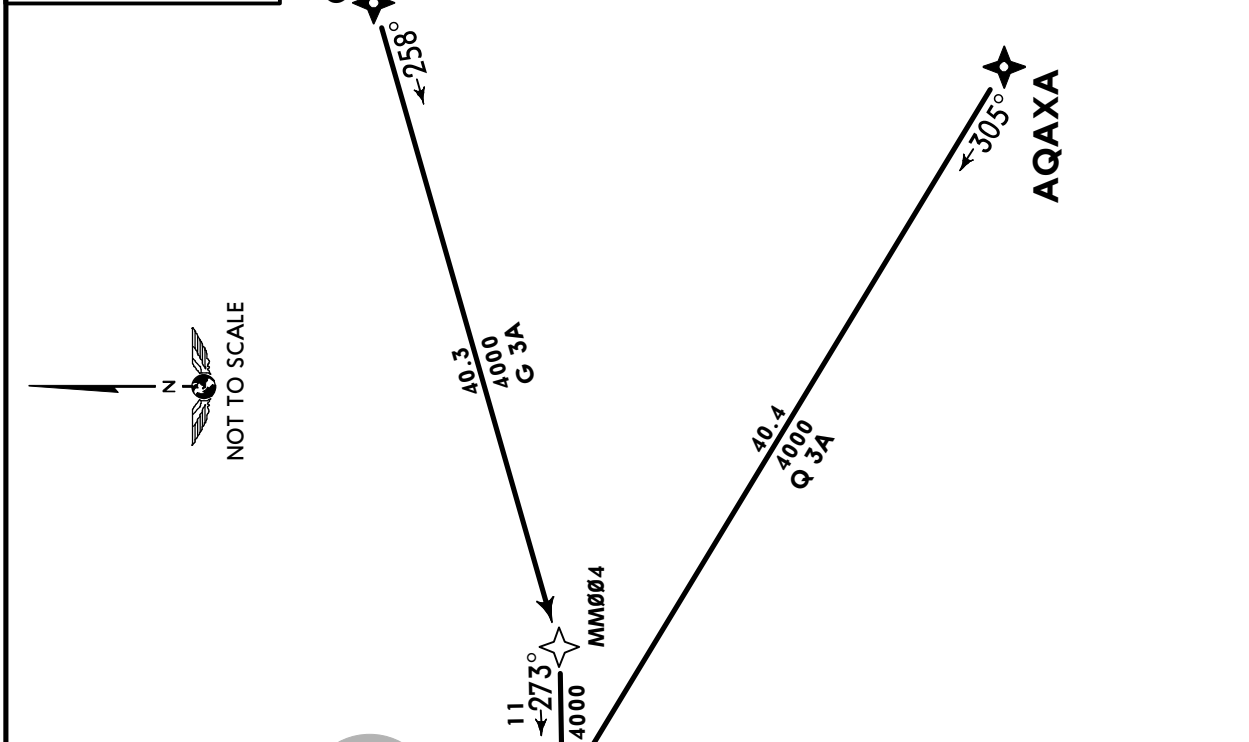
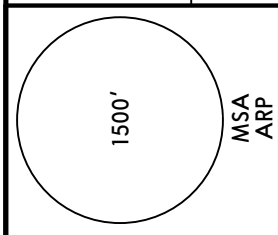
STAR	ROUTING
D 3B	DOPDO - MM003 - URDIV (4000'+).
K 3B	KAGUM - URDIV (4000'+).
L 3B	LELEM - URDIV (4000'+).
M 3B	MUGBA - URDIV (4000'+).

VRMM/MLE
VELANA INTL

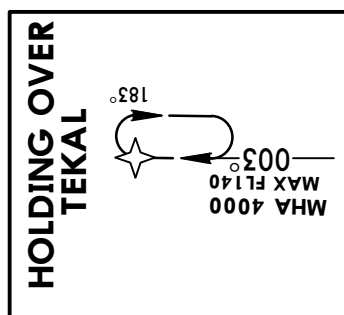
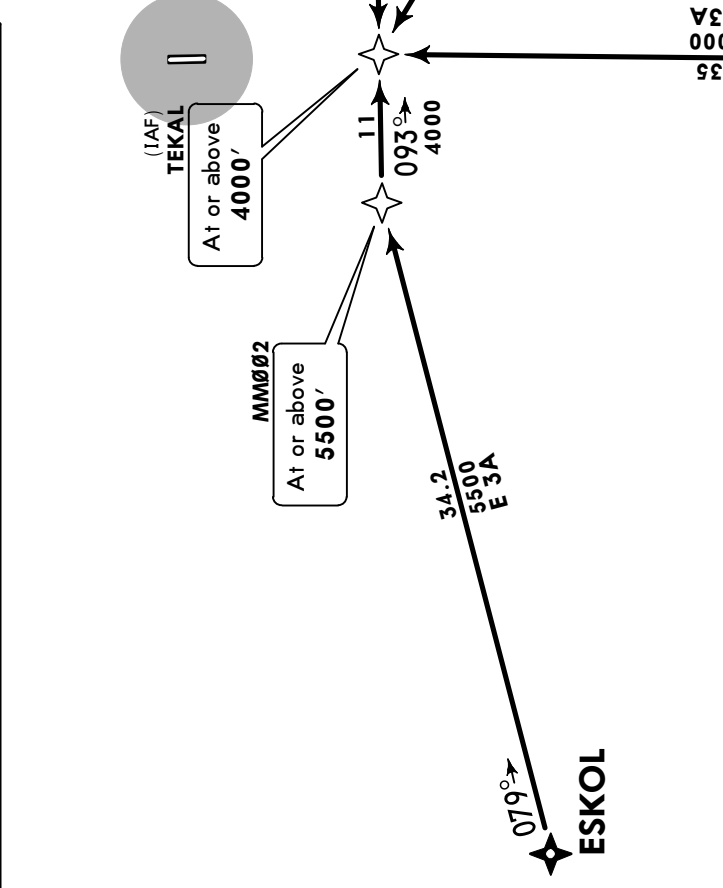
JEPPESSEN
20 OCT 17 **10-2B**

MALE, MALDIVES
RNAV STAR

ATIS 125.5	Apt Elev 6'	Alt Set: hPa Trans level: FL130 Trans alt: 11000' 1. RNAV 1. 2. GNS required. 3. Request and obtain ATC approval before passing TMA boundary. 4. EXPECT RADAR vectoring. 5. If unable to comply inform ATC.
----------------------	-----------------------	--



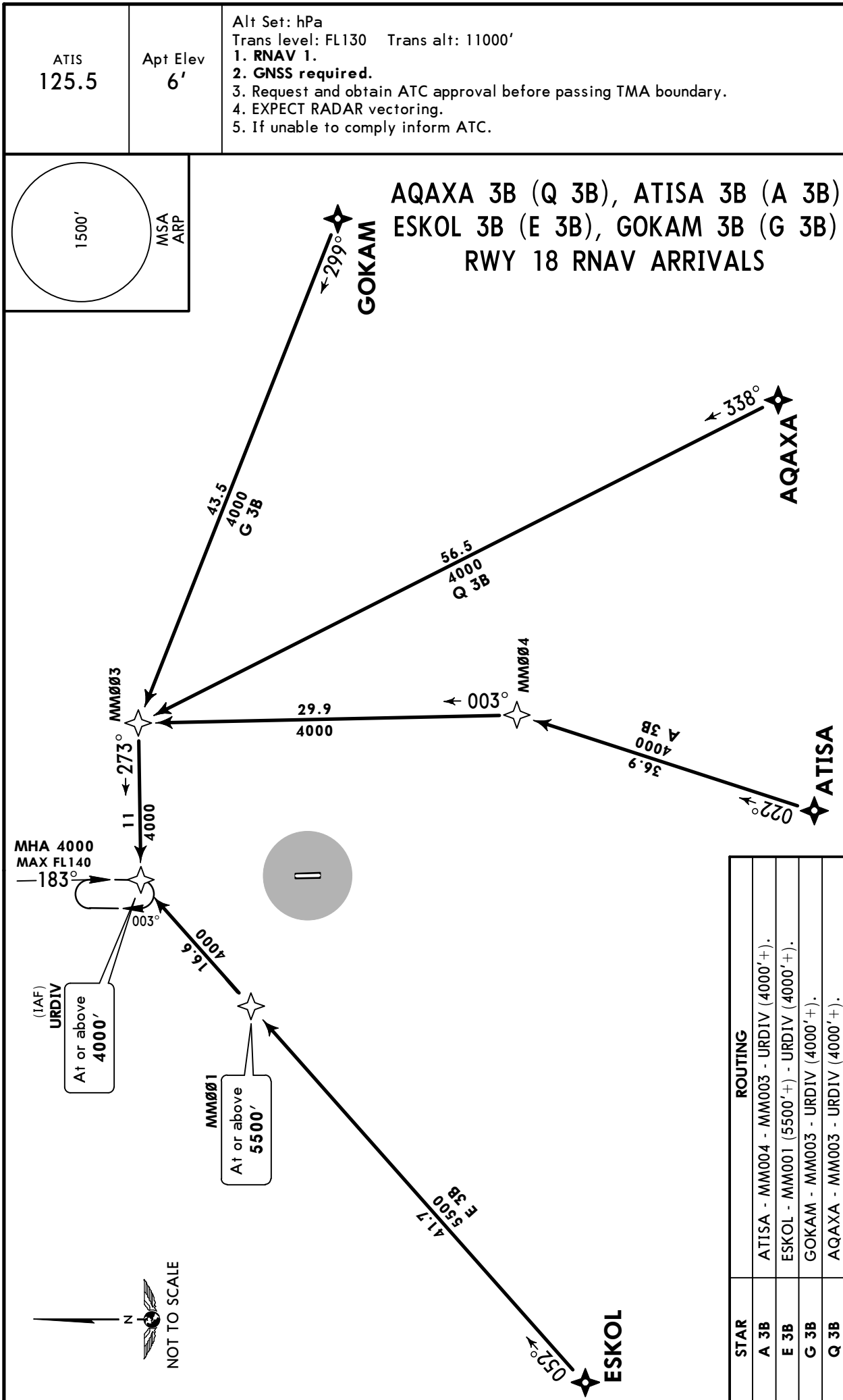
STAR	ROUTING
A 3A	ATISA - TEKAL (4000'+).
E 3A	ESKOL - MM002 (5500'+) - TEKAL (4000'+)
G 3A	GOKAM - MM004 - TEKAL (4000'+).
Q 3A	AQAXA - TEKAL (4000'+).



VRMM/MLE
VELANA INTL

JEPPESEN
20 OCT 17 **10-2C**

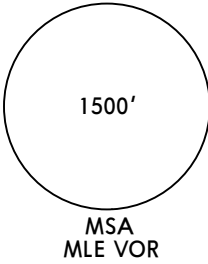
MALE, MALDIVES
RNAV STAR



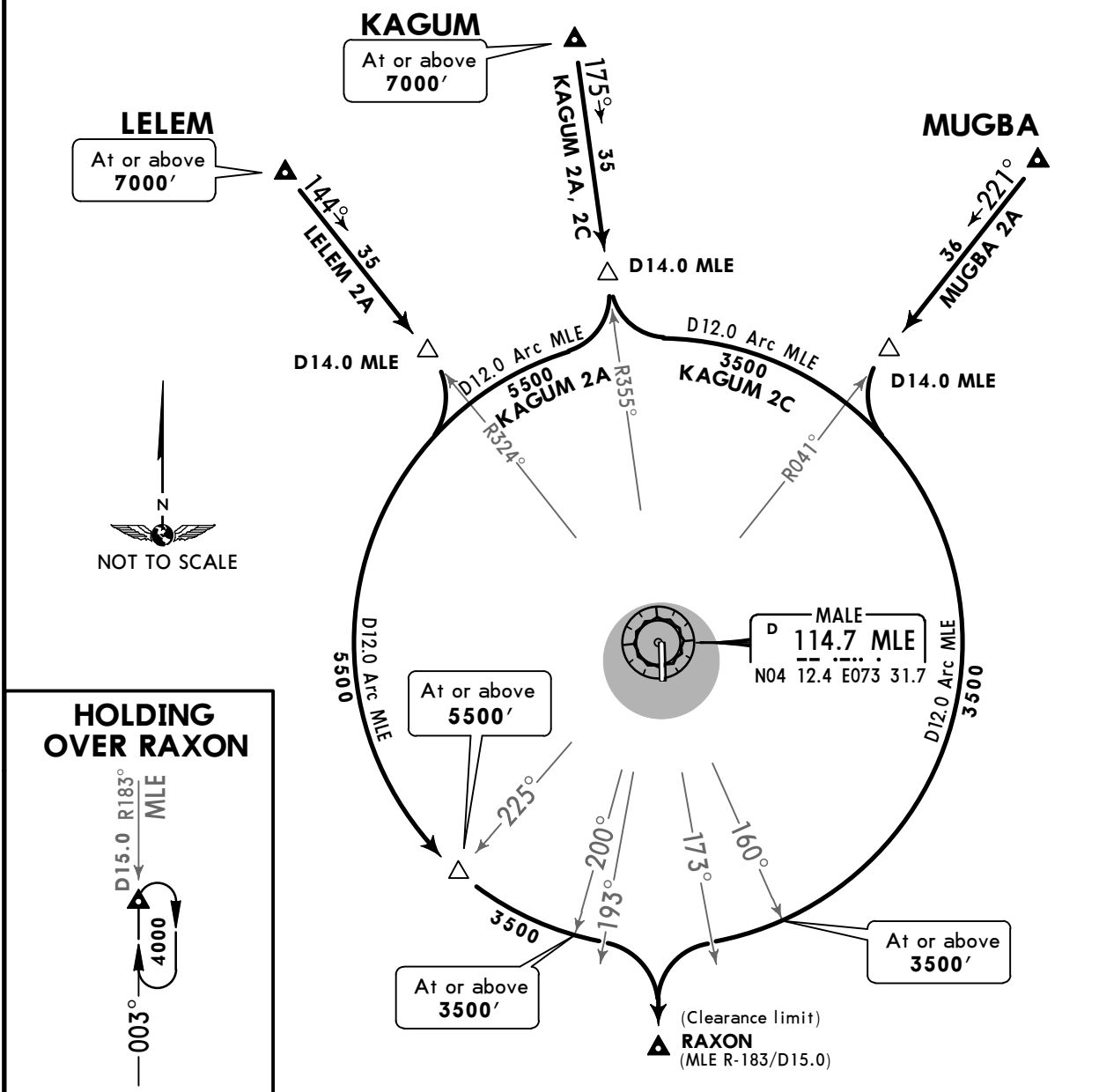
VRMM/MLE
VELANA INTL

JEPPESSEN
20 OCT 17 **(10-2D)**

MALE, MALDIVES
STAR

ATIS 125.5	Apt Elev 6'	Alt Set: hPa Trans level: FL130 Trans alt: 11000' Descend as cleared by ATC.	
----------------------	-----------------------	--	---

KAGUM 2A [KAGU2A]
KAGUM 2C [KAGU2C]
LELEM 2A [LELE2A]
MUGBA 2A [MUGB2A]
RWY 36 ARRIVALS



STAR	ROUTING
KAGUM 2A ①	Intercept MLE R-355 inbound, at D14.0 MLE turn RIGHT, along D12.0 Arc MLE, when passing MLE R-193 turn RIGHT to RAXON.
KAGUM 2C ②	Intercept MLE R-355 inbound, at D14.0 MLE turn LEFT, along D12.0 Arc MLE, when passing MLE R-173 turn LEFT to RAXON.
LELEM 2A ③	Intercept MLE R-324 inbound, at D14.0 MLE turn RIGHT, along D12.0 Arc MLE, when passing MLE R-193 turn RIGHT to RAXON.
MUGBA 2A ②	Intercept MLE R-041 inbound, at D14.0 MLE turn LEFT, along D12.0 Arc MLE, when passing MLE R-173 turn LEFT to RAXON.

- ① If cleared VOR/ILS approach before passing MLE R-200, execute VOR Z/ILS Z approach RWY 36.
- ② If cleared VOR/ILS approach before passing MLE R-160, execute VOR Z/ILS Z approach RWY 36.
- ③ If cleared VOR/ILS approach before passing MLE R-193, execute VOR Z/ILS Z approach RWY 36.

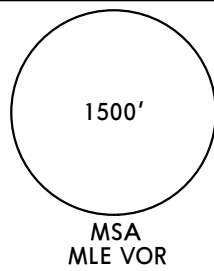
VRMM/MLE
VELANA INTL

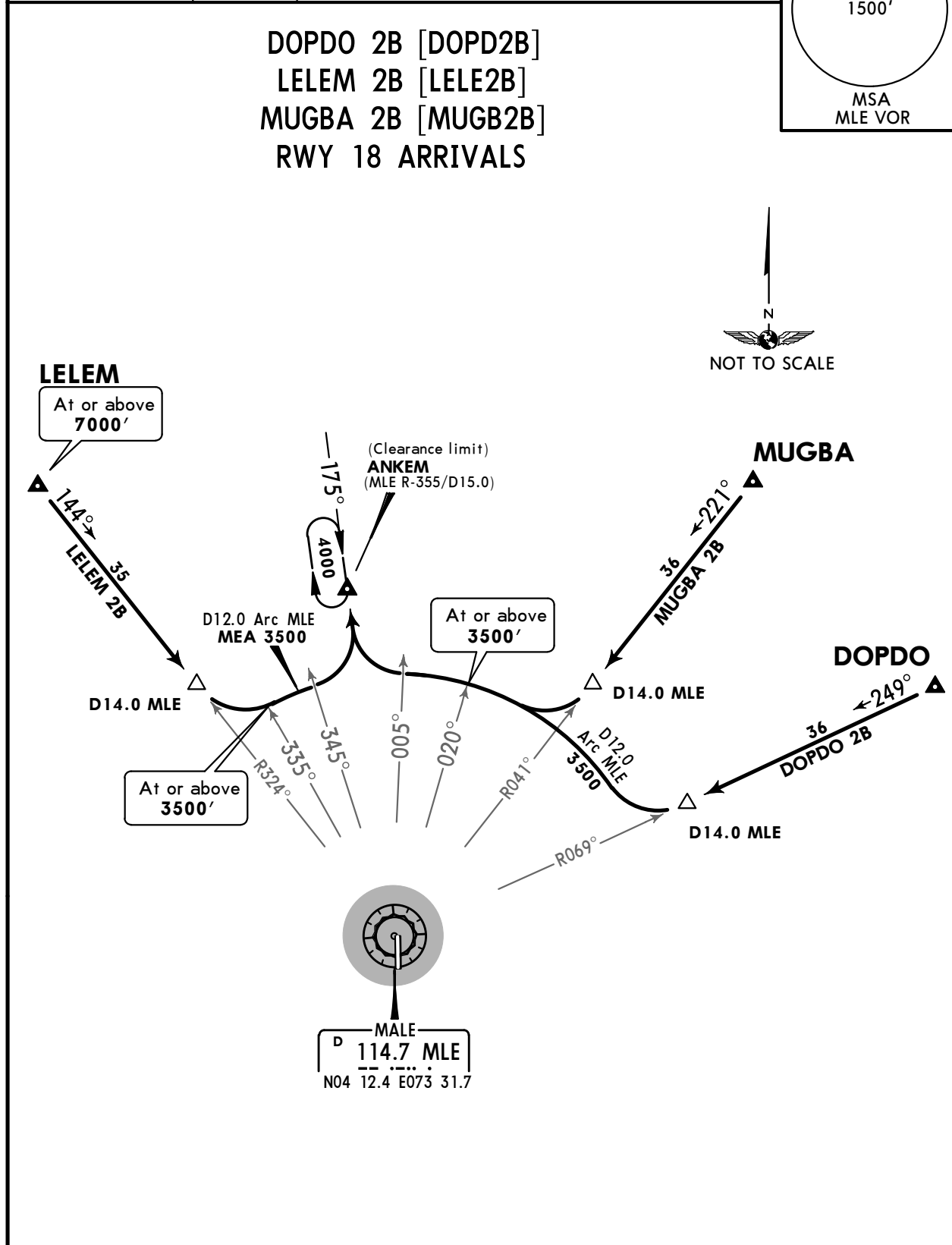
JEPPESSEN

MALE, MALDIVES

20 OCT 17 (10-2E)

STAR

ATIS 125.5	Apt Elev 6'	Alt Set: hPa Trans level: FL130 Trans alt: 11000' Descend as cleared by ATC.	
<p>DOPDO 2B [DOPD2B] LELEM 2B [LELE2B] MUGBA 2B [MUGB2B] RWY 18 ARRIVALS</p>			



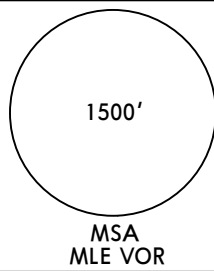
STAR	ROUTING
DOPDO 2B ①	Intercept MLE R-069 inbound, at D14.0 MLE turn RIGHT, along D12.0 Arc MLE, when passing MLE R-005 turn RIGHT to ANKEM.
LELEM 2B ②	Intercept MLE R-324 inbound, at D14.0 MLE turn LEFT, along D12.0 Arc MLE, when passing MLE R-345 turn LEFT to ANKEM.
MUGBA 2B ①	Intercept MLE R-041 inbound, at D14.0 MLE turn RIGHT, along D12.0 Arc MLE, when passing MLE R-005 turn RIGHT to ANKEM.

- ① If cleared VOR approach before passing MLE R-020, execute VOR Z approach RWY 18.
- ② If cleared VOR approach before passing MLE R-335, execute VOR Z approach RWY 18.

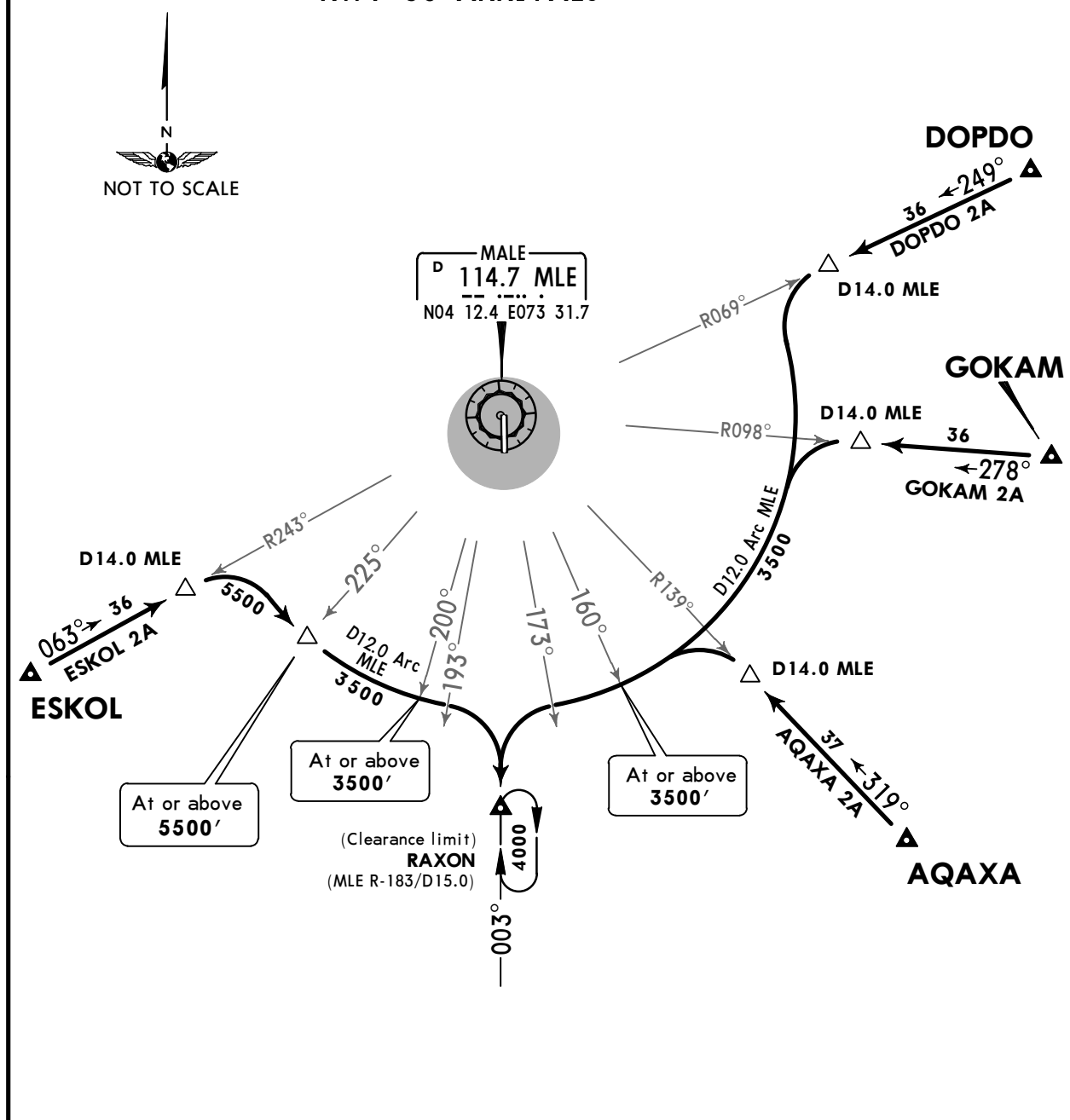
VRMM/MLE
VELANA INTL

JEPPESSEN
20 OCT 17 **10-2F**

MALE, MALDIVES
STAR

ATIS 125.5	Apt Elev 6'	Alt Set: hPa Trans level: FL130 Trans alt: 11000' Descend as cleared by ATC.	 <p>1500' MSA MLE VOR</p>
---------------	----------------	--	--

AQAXA 2A [AQAX2A]
DOPDO 2A [DOPD2A]
ESKOL 2A [ESK02A]
GOKAM 2A [GOKA2A]
RWY 36 ARRIVALS



STAR	ROUTING
AQAXA 2A ①	Intercept MLE R-139 inbound, at D14.0 MLE turn LEFT, along D12.0 Arc MLE, when passing MLE R-173 turn LEFT to RAXON.
DOPDO 2A ①	Intercept MLE R-069 inbound, at D14.0 MLE turn LEFT, along D12.0 Arc MLE, when passing MLE R-173 turn LEFT to RAXON.
ESKOL 2A ②	Intercept MLE R-243 inbound, at D14.0 MLE turn RIGHT, along D12.0 Arc MLE, when passing MLE R-193 turn RIGHT to RAXON.
GOKAM 2A ①	Intercept MLE R-098 inbound, at D14.0 MLE turn LEFT, along D12.0 Arc MLE, when passing MLE R-173 turn LEFT to RAXON.

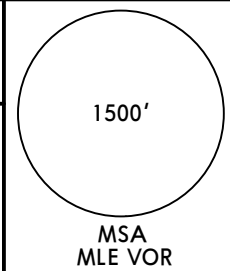
- ① If cleared VOR/ILS approach before passing MLE R-160, execute VOR Z/ILS Z approach RWY 36.
- ② If cleared VOR/ILS approach before passing MLE R-200, execute VOR Z/ILS Z approach RWY 36.

VRMM/MLE
VELANA INTL

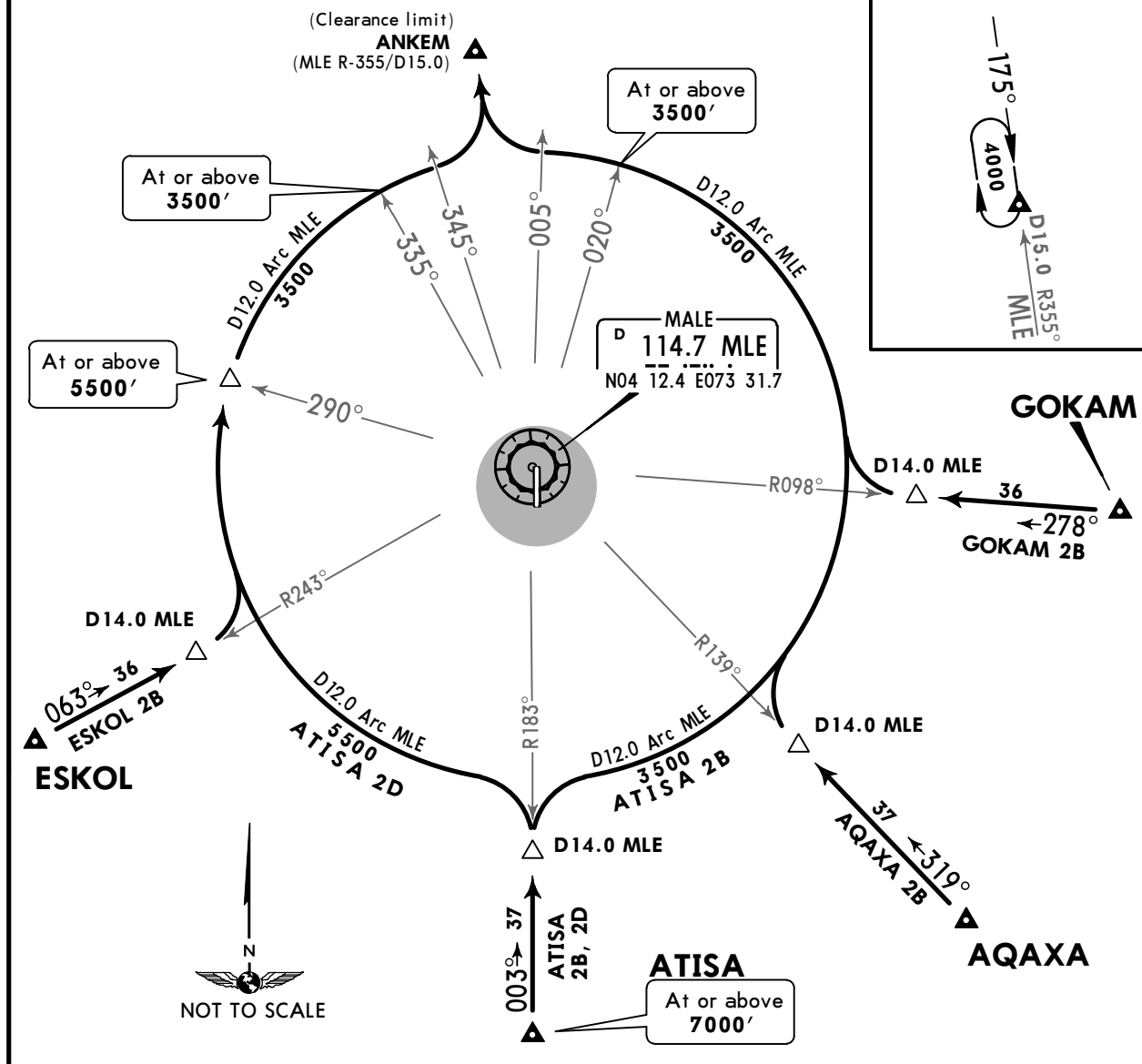
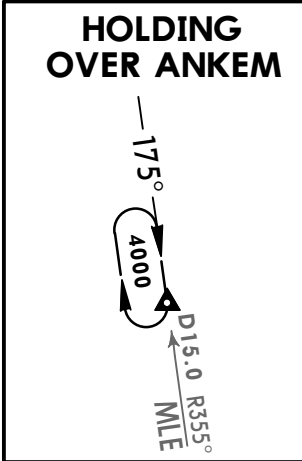
JEPPESSEN
20 OCT 17 **(10-2G)**

MALE, MALDIVES
STAR

ATIS 125.5	Apt Elev 6'	Alt Set: hPa Trans level: FL130 Trans alt: 11000' Descend as cleared by ATC.
---------------	----------------	--



AQAXA 2B [AQAX2B]
ATISA 2B [ATIS2B]
ATISA 2D [ATIS2D]
ESKOL 2B [ESKO2B]
GOKAM 2B [GOKA2B]
RWY 18 ARRIVALS



STAR	ROUTING
AQAXA 2B ①	Intercept MLE R-139 inbound, at D14.0 MLE turn RIGHT, along D12.0 Arc MLE, when passing MLE R-005 turn RIGHT to ANKEM.
ATISA 2B ①	Intercept MLE R-183 inbound, at D14.0 MLE turn RIGHT, along D12.0 Arc MLE, when passing MLE R-005 turn RIGHT to ANKEM.
ATISA 2D ②	Intercept MLE R-183 inbound, at D14.0 MLE turn LEFT, along D12.0 Arc MLE, when passing MLE R-345 turn LEFT to ANKEM.
ESKOL 2B ②	Intercept MLE R-243 inbound, at D14.0 MLE turn LEFT, along D12.0 Arc MLE, when passing MLE R-345 turn LEFT to ANKEM.
GOKAM 2B ①	Intercept MLE R-098 inbound, at D14.0 MLE turn RIGHT, along D12.0 Arc MLE, when passing MLE R-005 turn RIGHT to ANKEM.

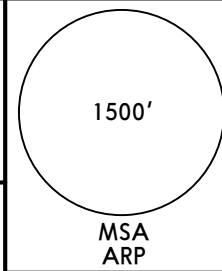
- ① If cleared VOR approach before passing MLE R-020, execute VOR Z approach RWY 18.
- ② If cleared VOR approach before passing MLE R-335, execute VOR Z approach RWY 18.

VRMM/MLE
VELANA INTL

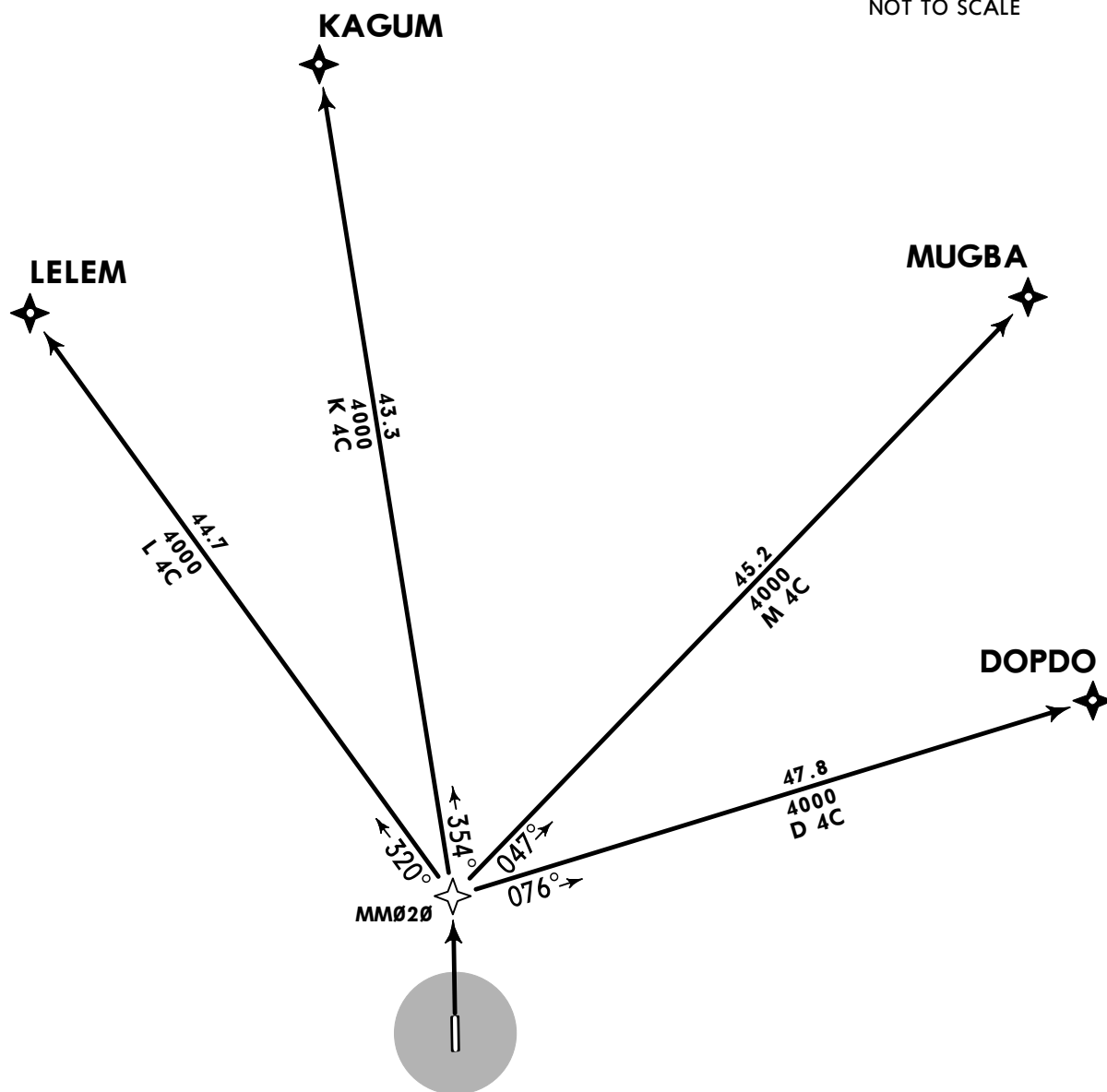
JEPPESSEN
20 OCT 17 **10-3**

MALE, MALDIVES
RNAV SID

Apt Elev 6'
Trans level: FL130 Trans alt: 11000'
1. RNAV 1.
2. GNSS required.
3. Request ATC approval before take-off.
4. EXPECT RADAR vectoring.
5. If unable to comply inform ATC.



DOPDO 4C (D 4C), KAGUM 4C (K 4C)
LELEM 4C (L 4C), MUGBA 4C (M 4C)
RWY 36 RNAV DEPARTURES



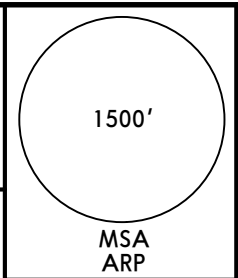
SID	ROUTING
D 4C	MM020 - DOPDO.
K 4C	MM020 - KAGUM.
L 4C	MM020 - LELEM.
M 4C	MM020 - MUGBA.

VRMM/MLE
VELANA INTL

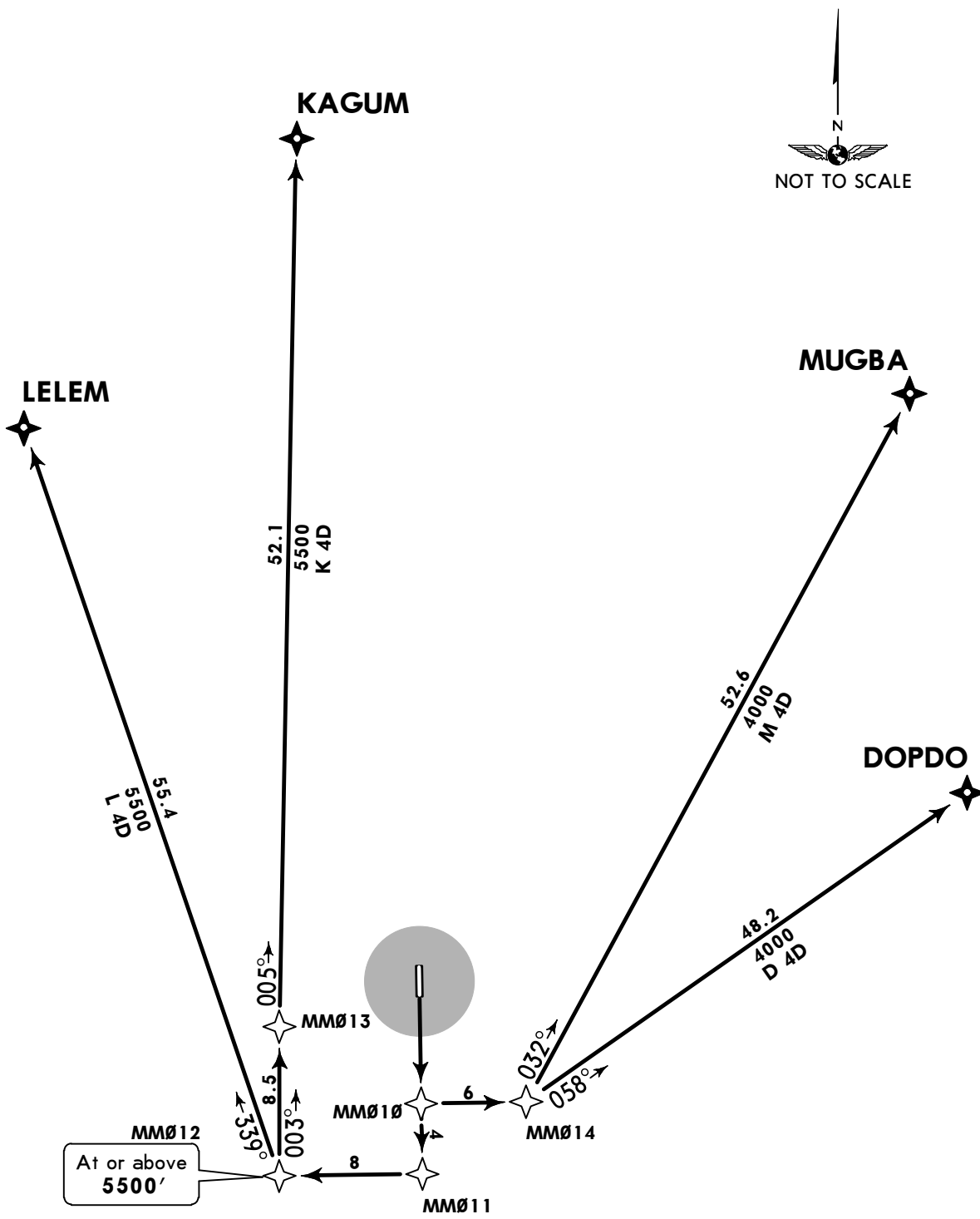
JEPPESSEN
20 OCT 17 (10-3A)

MALE, MALDIVES
RNAV SID

Apt Elev 6'
Trans level: FL130 Trans alt: 11000'
1. RNAV 1.
2. GNSS required.
3. Request ATC approval before take-off.
4. EXPECT RADAR vectoring.
5. If unable to comply inform ATC.



**DOPDO 4D (D 4D), KAGUM 4D (K 4D)
LELEM 4D (L 4D), MUGBA 4D (M 4D)
RWY 18 RNAV DEPARTURES**



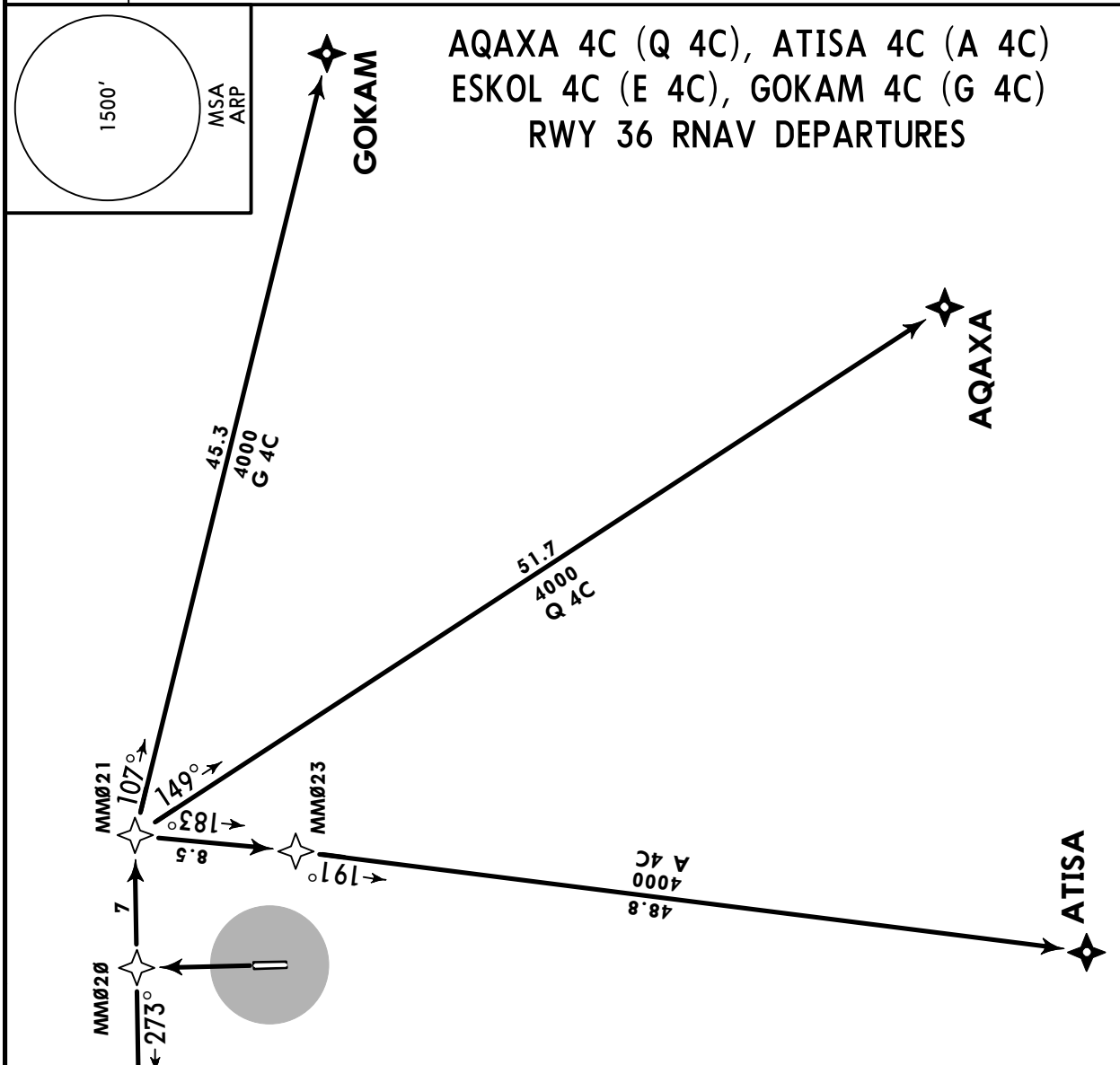
SID	ROUTING
D 4D	MM010 - MM014 - DOPDO.
K 4D	MM010 - MM011 - MM012 (5500'+) - MM013 - KAGUM.
L 4D	MM010 - MM011 - MM012 (5500'+) - LELEM.
M 4D	MM010 - MM014 - MUGBA.

VRMM/MLE
VELANA INTL

JEPPESEN
20 OCT 17 **10-3B**

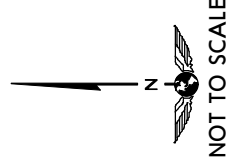
MALE, MALDIVES
RNAV SID

Apt Elev 6'
Trans level: FL130 Trans alt: 11000'
1. RNAV 1.
2. GNSS required.
3. Request ATC approval before take-off.
4. EXPECT RADAR vectoring.
5. If unable to comply inform ATC.



AQAXA 4C (Q 4C), ATISA 4C (A 4C)
ESKOL 4C (E 4C), GOKAM 4C (G 4C)
RWY 36 RNAV DEPARTURES

SID	ROUTING
A 4C	MM020 - MM021 - MM023 - ATISA.
E 4C	MM020 - MM022 (5500' +) - ESKOL.
G 4C	MM020 - MM021 - GOKAM.
Q 4C	MM020 - MM021 - AQAXA.

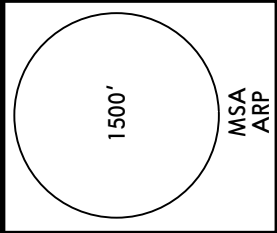


VRMM/MLE
VELANA INTL

JEPPESSEN
20 OCT 17 **(10-3C)**

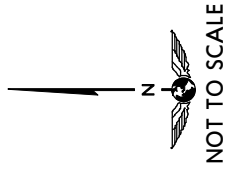
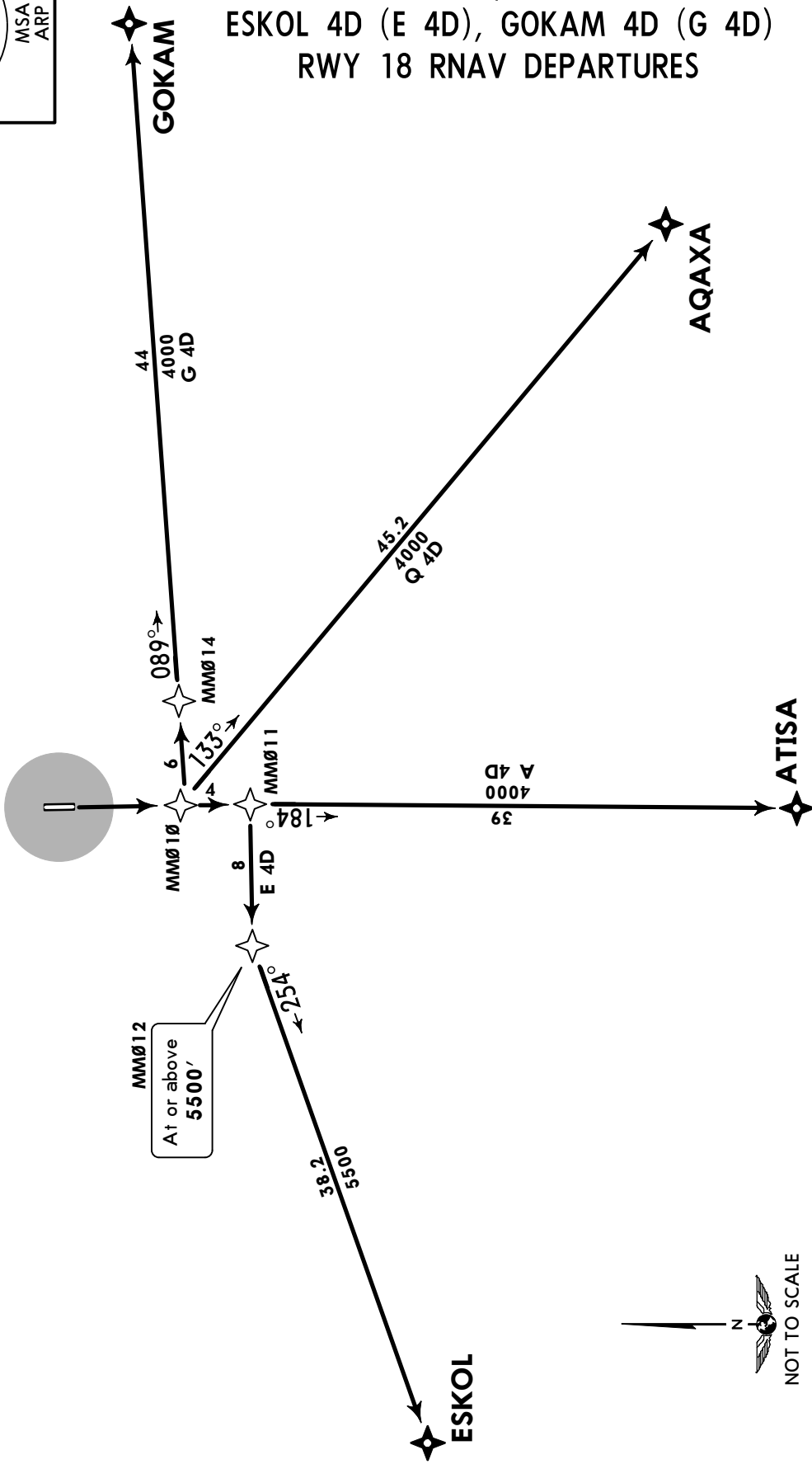
MALE, MALDIVES
RNAV SID

Apt Elev **6'**
Trans level: FL130 Trans alt: 11000'
1. **RNAV 1.**
2. **GNSS required.**
3. Request ATC approval before take-off.
4. EXPECT RADAR vectoring.
5. If unable to comply inform ATC.



AQAXA 4D (Q 4D), ATISA 4D (A 4D)
ESKOL 4D (E 4D), GOKAM 4D (G 4D)
RWY 18 RNAV DEPARTURES

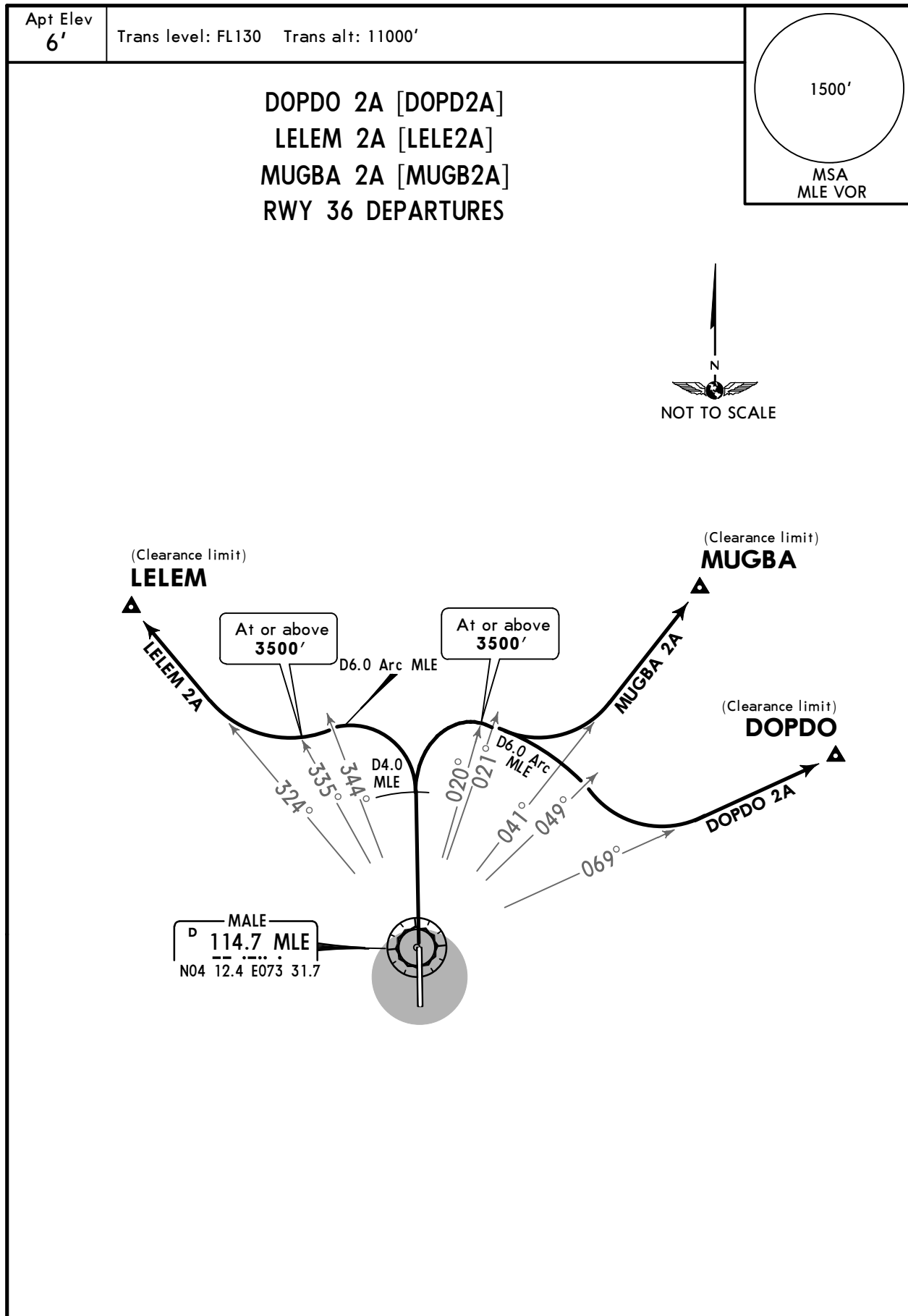
SID	ROUTING
A 4D	MM010 - ATISA.
E 4D	MM010 - MM011 - MM012 (5500'+) - ESKOL.
G 4D	MM010 - MM014 - GOKAM.
Q 4D	MM010 - AQAXA.



VRMM/MLE
VELANA INTL

JEPPESEN
20 OCT 17 (10-3D)

MALE, MALDIVES
SID



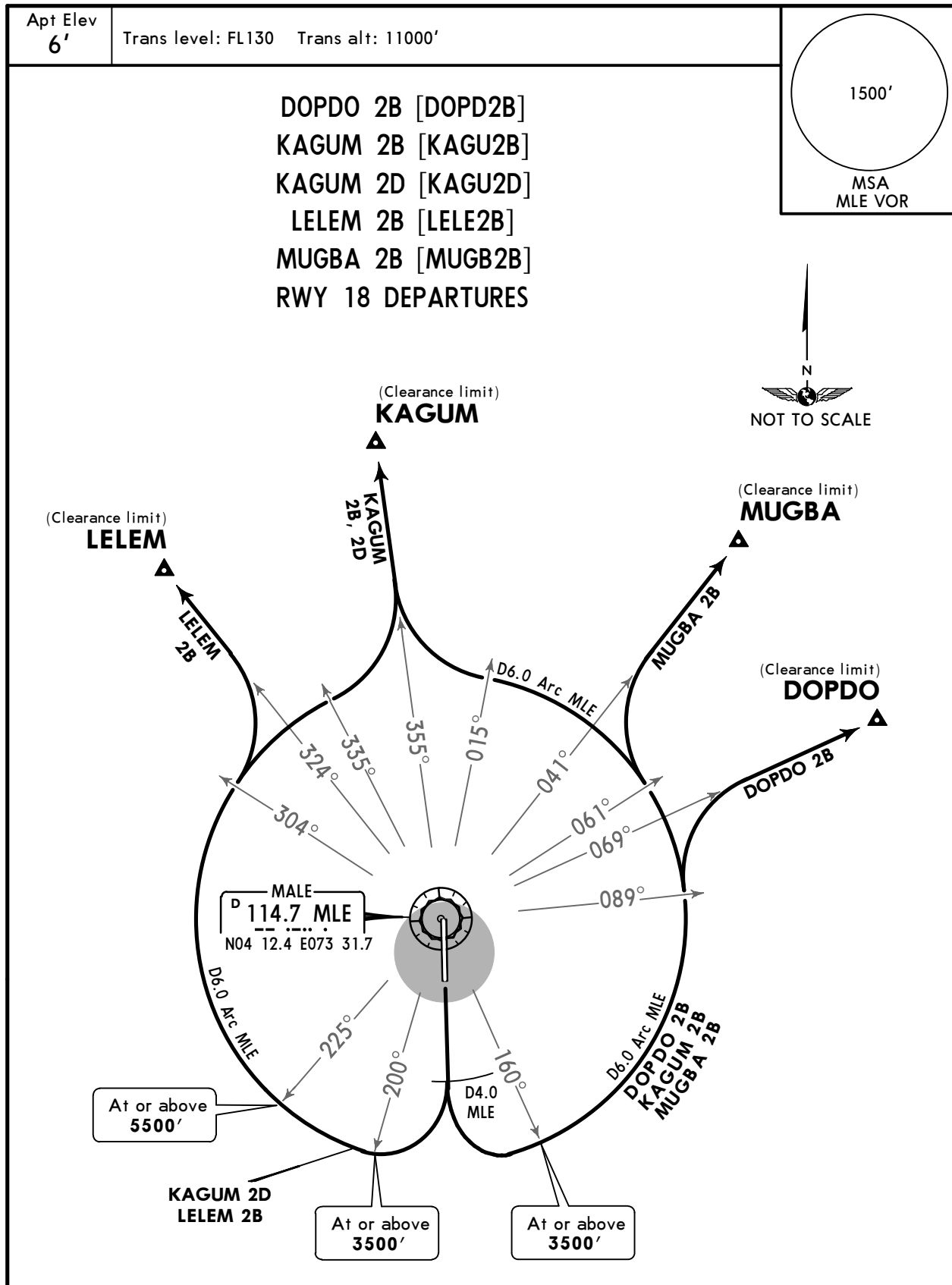
Initial climb clearance By ATC

SID	ROUTING
DOPDO 2A	Climb on runway heading to D4.0 MLE, turn RIGHT, along D6.0 Arc MLE, when passing MLE R-049 turn LEFT, intercept MLE R-069 to DOPDO.
LELEM 2A	Climb on runway heading to D4.0 MLE, turn LEFT, along D6.0 Arc MLE, when passing MLE R-344 turn RIGHT, intercept MLE R-324 to LELEM.
MUGBA 2A	Climb on runway heading to D4.0 MLE, turn RIGHT, along D6.0 Arc MLE, when passing MLE R-021 turn LEFT, intercept MLE R-041 to MUGBA.

VRMM/MLE
VELANA INTL

JEPPESSEN
20 OCT 17 **(10-3E)**

MALE, MALDIVES
SID

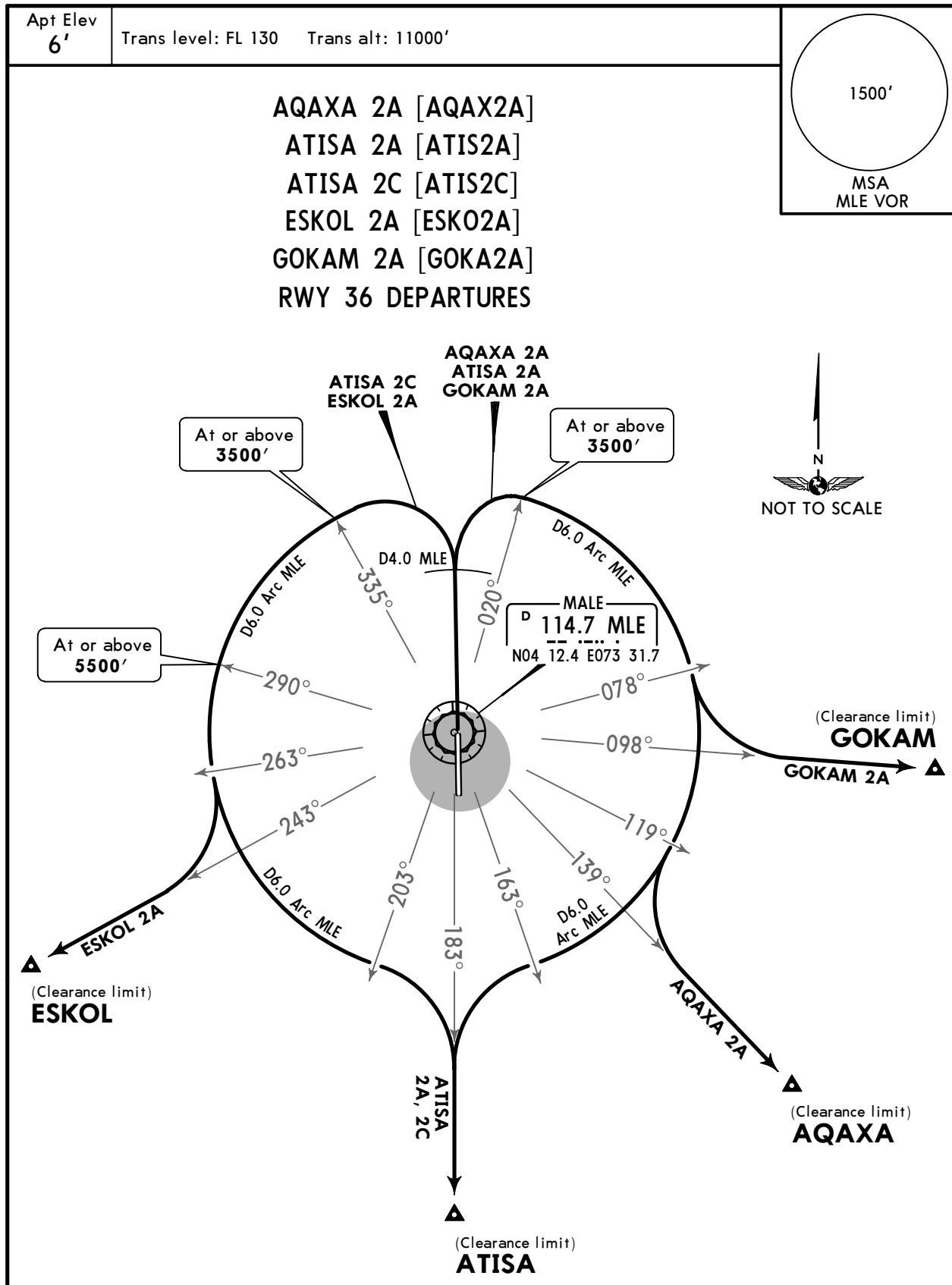


SID	ROUTING
DOPDO 2B	Climb on runway heading to D4.0 MLE, turn LEFT, along D6.0 Arc MLE, when passing MLE R-089 turn RIGHT, intercept MLE R-069 to DOPDO.
KAGUM 2B	Climb on runway heading to D4.0 MLE, turn LEFT, along D6.0 Arc MLE, when passing MLE R-015 turn RIGHT, intercept MLE R-355 to KAGUM.
KAGUM 2D	Climb on runway heading to D4.0 MLE, turn RIGHT, along D6.0 Arc MLE, when passing MLE R-335 turn LEFT, intercept MLE R-355 to KAGUM.
LELEM 2B	Climb on runway heading to D4.0 MLE, turn RIGHT, along D6.0 Arc MLE, when passing MLE R-304 turn LEFT, intercept MLE R-324 to LELEM.
MUGBA 2B	Climb on runway heading to D4.0 MLE, turn LEFT, along D6.0 Arc MLE, when passing MLE R-061 turn RIGHT, intercept MLE R-041 to MUGBA.

VRMM/MLE
VELANA INTL

JEPPESSEN
20 OCT 17 **10-3F**

MALE, MALDIVES
SID

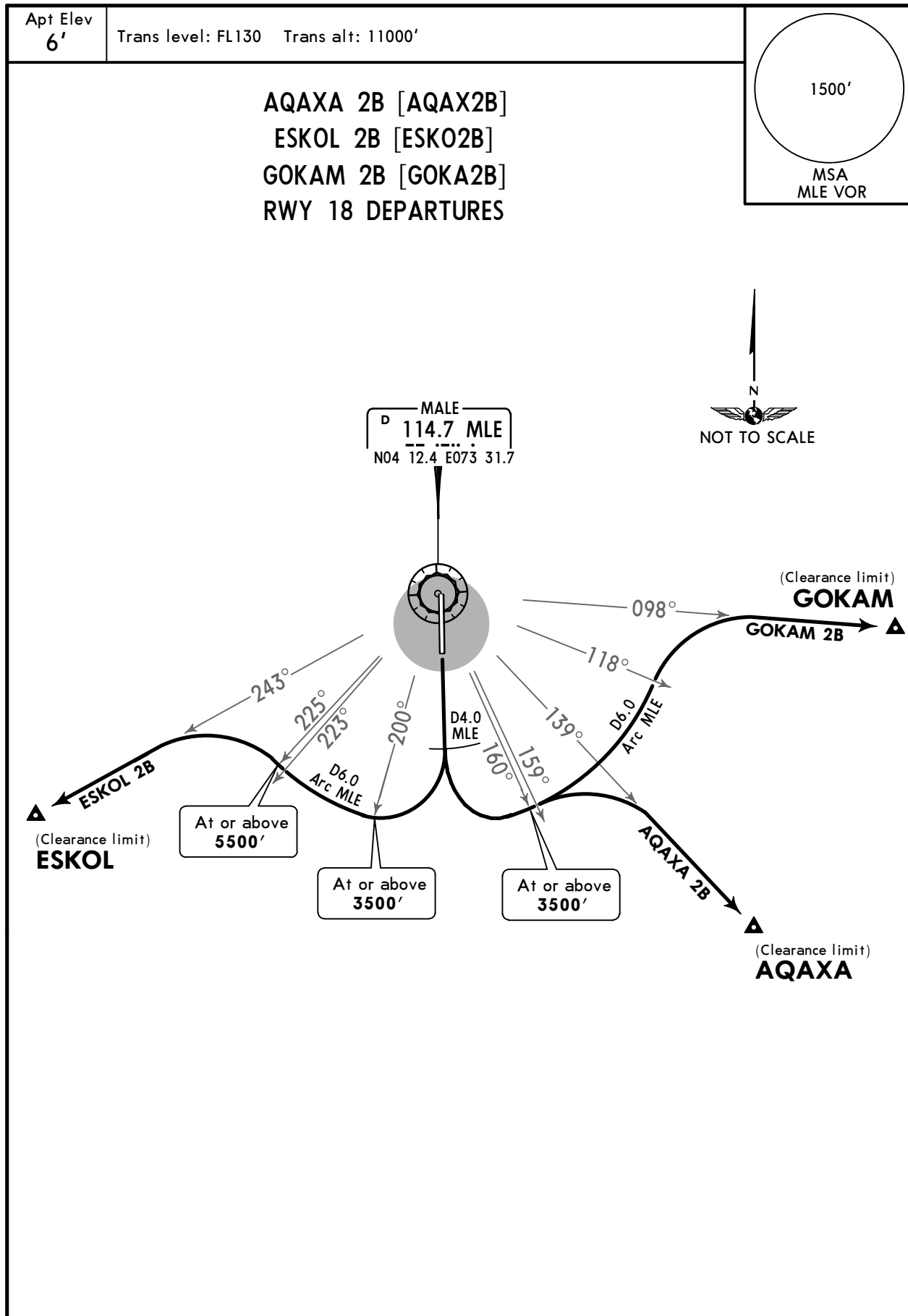


Initial climb clearance By ATC	
SID	ROUTING
AQAXA 2A	Climb on runway heading to D4.0 MLE, turn RIGHT, along D6.0 Arc MLE, when passing MLE R-119 turn LEFT, intercept MLE R-139 to AQAXA.
ATISA 2A	Climb on runway heading to D4.0 MLE, turn RIGHT, along D6.0 Arc MLE, when passing MLE R-163 turn LEFT, intercept MLE R-183 to ATISA.
ATISA 2C	Climb on runway heading to D4.0 MLE, turn LEFT, along D6.0 Arc MLE, when passing MLE R-203 turn RIGHT, intercept MLE R-183 to ATISA.
ESKOL 2A	Climb on runway heading to D4.0 MLE, turn LEFT, along D6.0 Arc MLE, when passing MLE R-263 turn RIGHT, intercept MLE R-243 to ESKOL.
GOKAM 2A	Climb on runway heading to D4.0 MLE, turn RIGHT, along D6.0 Arc MLE, when passing MLE R-078 turn LEFT, intercept MLE R-098 to GOKAM.

VRMM/MLE
VELANA INTL

JEPPESEN
20 OCT 17 **(10-3G)**

MALE, MALDIVES
SID



Initial climb clearance By ATC	
SID	ROUTING
AQAXA 2B	Climb on runway heading to D4.0 MLE, turn LEFT, along D6.0 Arc MLE, when passing MLE R-159 turn RIGHT, intercept MLE R-139 to AQAXA.
ESKOL 2B	Climb on runway heading to D4.0 MLE, turn RIGHT, along D6.0 Arc MLE, when passing MLE R-223 turn LEFT, intercept MLE R-243 to ESKOL.
GOKAM 2B	Climb on runway heading to D4.0 MLE, turn LEFT, along D6.0 Arc MLE, when passing MLE R-118 turn RIGHT, intercept MLE R-098 to GOKAM.

VRMM/MLE

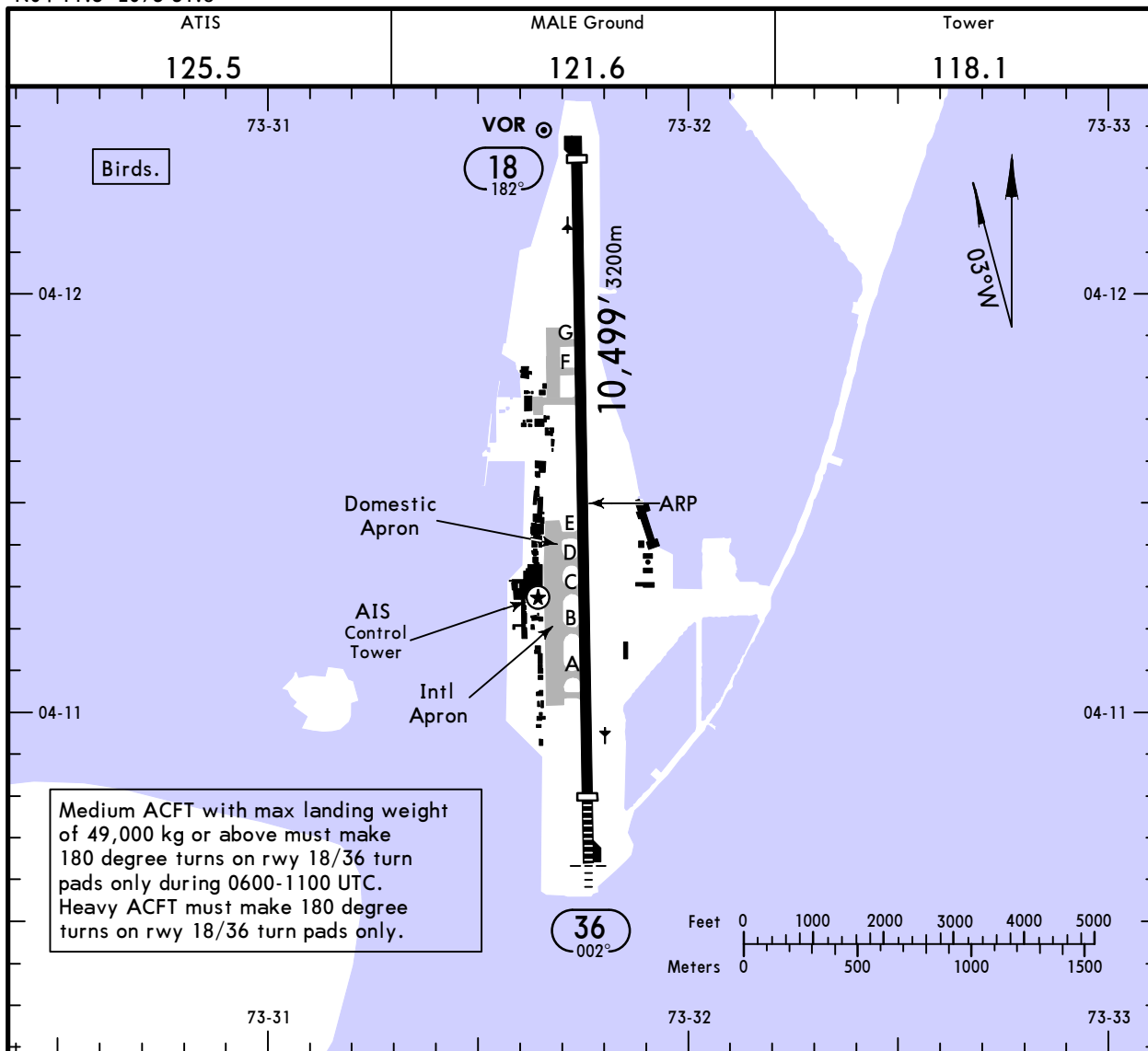
JEPPESSEN

MALE, MALDIVES

Apt Elev **6'**
N04 11.5 E073 31.8

20 OCT 17 **(10-9)**

VELANA INTL



Medium ACFT with max landing weight of 49,000 kg or above must make 180 degree turns on rwy 18/36 turn pads only during 0600-1100 UTC. Heavy ACFT must make 180 degree turns on rwy 18/36 turn pads only.

ADDITIONAL RUNWAY INFORMATION

RWY	USABLE LENGTHS				TAKE-OFF	WIDTH
	HIRL (60m)		LANDING BEYOND			
		PAPI (2.83°)	Threshold	Glide Slope		
18	HIRL (60m)	PAPI (2.83°)	10,171' 3100m			148'
36	HIRL (60m)	HIALS PAPI (2.86°)	9547' 2910m	8454' 2577m		45m

NOISE ABATEMENT PROCEDURES

Due to noise sensitive area around the final apch of rwy 36, jet or heavy acft making visual apch rwy 36 shall extend downwind leg and join final beyond 7 miles and not descend below the circuit alt until established on final.

TAKE-OFF

AIR CARRIER (JAA)

All Rwys

	LVP must be in force RCLM (DAY only) or RL	RCLM (DAY only) or RL
A		
B	250m	400m
C		
D	300m	

VRMM/MLE



Standard
MALE, MALDIVES
 VELANA INTL

STRAIGHT-IN RWY		A	B	C	D
18	RNAV (LNAV/VNAV)	290'(284') R1400m	290'(284') R1400m	290'(284') R1400m	290'(284') R1400m
	RNAV (LNAV) ①	390'(384') R1500m	390'(384') R1500m	390'(384') R1800m	390'(384') R1800m
	VOR ①	440'(434') R1500m	440'(434') R1500m	440'(434') R2000m	440'(434') R2000m
36	ILS	220'(214') R1000m	230'(224') R1000m	240'(234') R1000m	250'(244') R1000m
	ALS out	R1200m	R1200m	R1200m	R1300m
	LOC ①	340'(334') R1300m	340'(334') R1300m	340'(334') R1300m	340'(334') R1300m
	ALS out	R1500m	R1500m	R1500m	R1500m
	RNAV (LNAV/VNAV)	320'(314') R1200m	320'(314') R1200m	320'(314') R1200m	320'(314') R1200m
	ALS out	R1400m	R1400m	R1400m	R1400m
	RNAV (LNAV) ①	390'(384') R1500m	390'(384') R1500m	390'(384') R1600m	390'(384') R1600m
	ALS out	R1500m	R1500m	R1800m	R1800m
	VOR ①	440'(434') R1500m	440'(434') R1500m	440'(434') R1800m	440'(434') R1800m
	ALS out	R1500m	R1500m	R2000m	R2000m

① Continuous Descent Final Approach.

CIRCLE-TO-LAND	A	B	C	D
	NOT AUTHORIZED			

TAKE-OFF

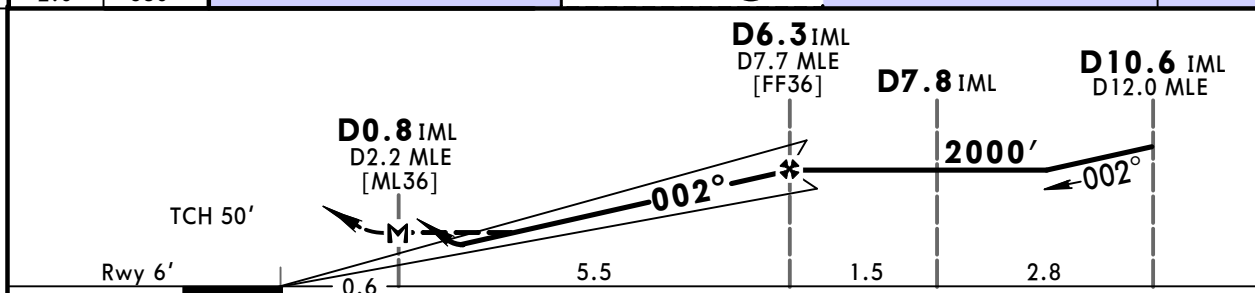
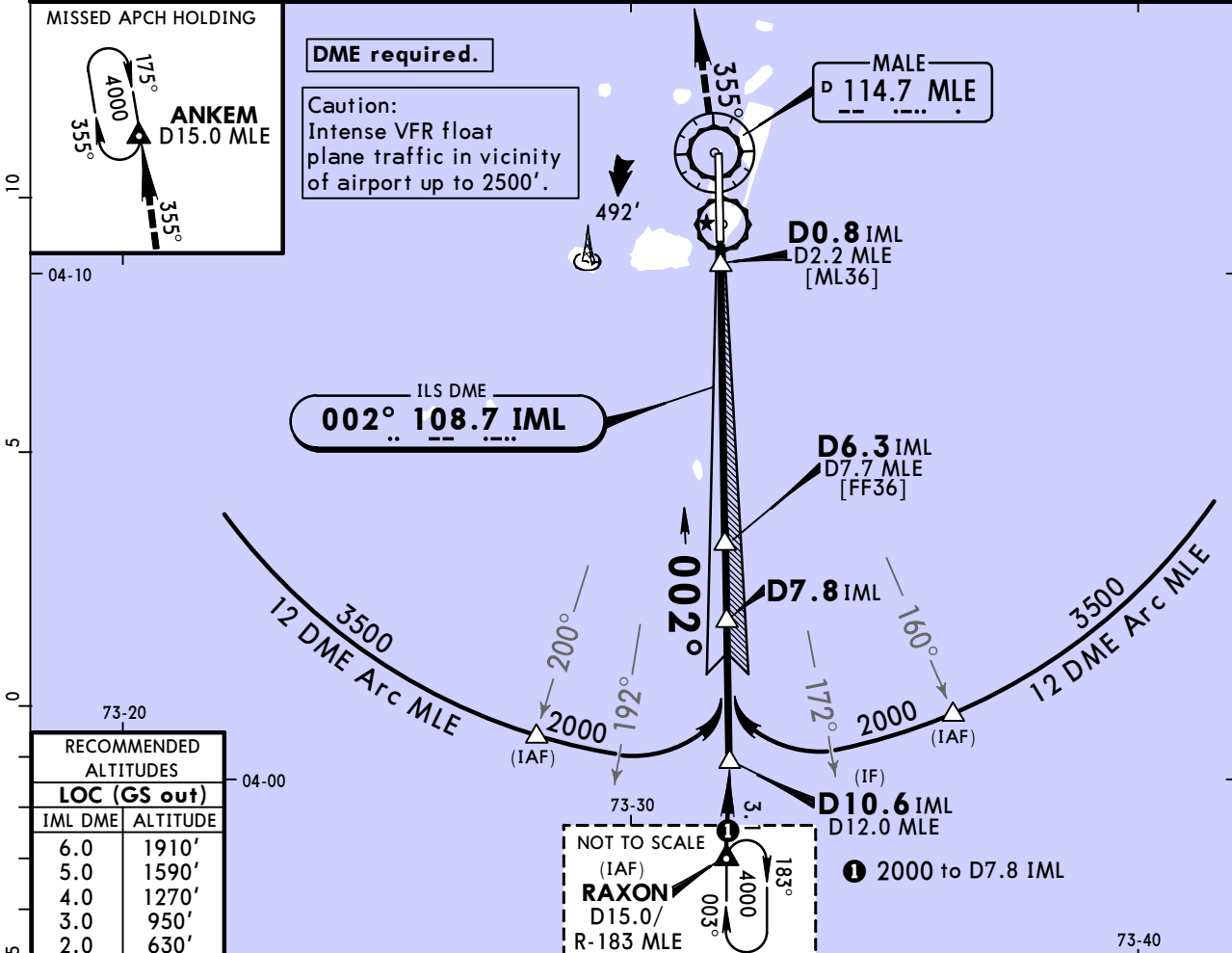
	Low Visibility Take-off		
	Day: RL & RCLM Night: RL	Day: RL or RCLM Night: RL	Adequate vis ref (Day only)
A	R300m	400m	500m
B			
C			
D			

VRMM/MLE
VELANA INTL

JEPPESSEN
20 OCT 17 **(11-1)**

MALE, MALDIVES
ILS Z Rwy 36

ATIS 125.5		MALE Approach 119.7		MALE Tower 118.1		Ground 121.6	
LOC IML 108.7	Final Apch Crs 002°	GS D6.3 IML 2000' (1994')	ILS DA(H) Refer to Minimums	Apt Elev 6' Rwy 6'		1500'	
MISSED APCH: Climb on R-355 MLE to 4000', proceed to ANKEM and hold or as directed.							
Alt Set: hPa		Rwy Elev: 0 hPa		Trans level: FL 130		Trans alt: 11000'	
						MSA MLE VOR	



Gnd speed-Kts	70	90	100	120	140	160	HIALS PAPI PAPI 4000' MLE on 114.7 LT R-355
Descent Angle	3.00°	372	478	531	637	743	
MAP at D0.8 IML/D2.2 MLE							

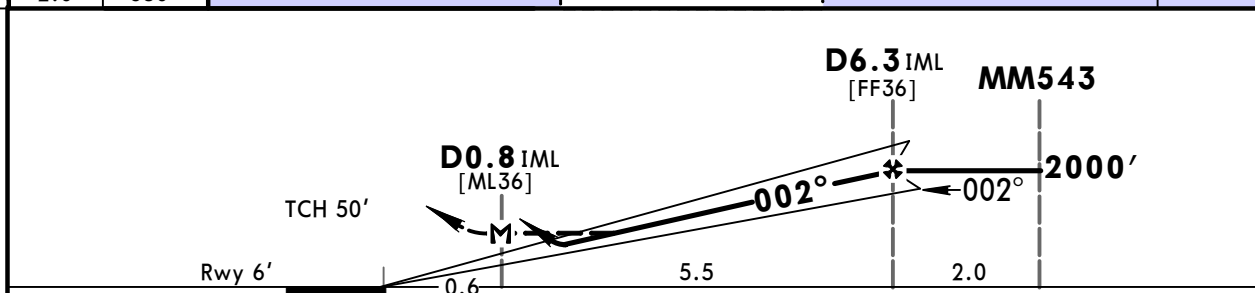
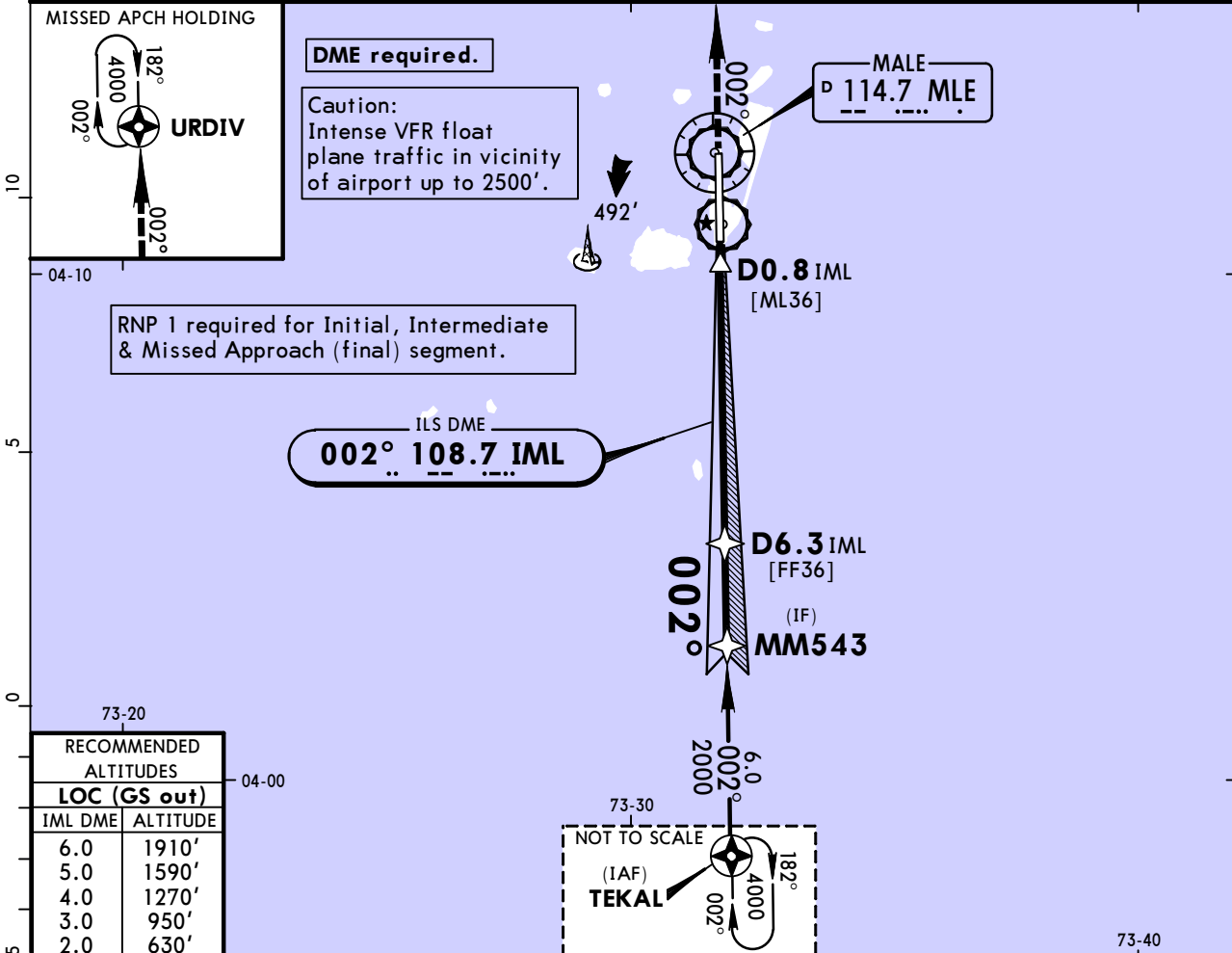
STRAIGHT-IN LANDING RWY 36				CIRCLE-TO-LAND			
ILS				LOC (GS out)			
DA(H) A: 220' (214')		C: 240' (234')		MDA(H) 340' (334')			
B: 230' (224')		D: 250' (244')		ALS out		ALS out	
FULL		ALS out					
A				A	NOT AUTHORIZED		
B				B			
C	1200m			C			
D	1600m			D			

VRMM/MLE
VELANA INTL

JEPPESSEN
20 OCT 17 **(11-2)**

MALE, MALDIVES
ILS Y Rwy 36

ATIS 125.5		MALE Approach 119.7		MALE Tower 118.1		Ground 121.6	
LOC IML 108.7	Final Apch Crs 002°	GS D6.3 IML 2000' (1994')	ILS DA(H) Refer to Minimums	Apt Elev 6' Rwy 6'		1500'	
MISSED APCH: Climb STRAIGHT AHEAD to 4000'. Track 002° to URDIV and hold or as directed.							
Alt Set: hPa		Rwy Elev: 0 hPa		Trans level: FL 130		Trans alt: 11000'	
						MSA MLE VOR	



Gnd speed-Kts	70	90	100	120	140	160	HIALS PAPI PAPI 4000' ↑ on 002° URDIV
Descent Angle	3.00°	372	478	531	637	849	
MAP at D0.8 IML							

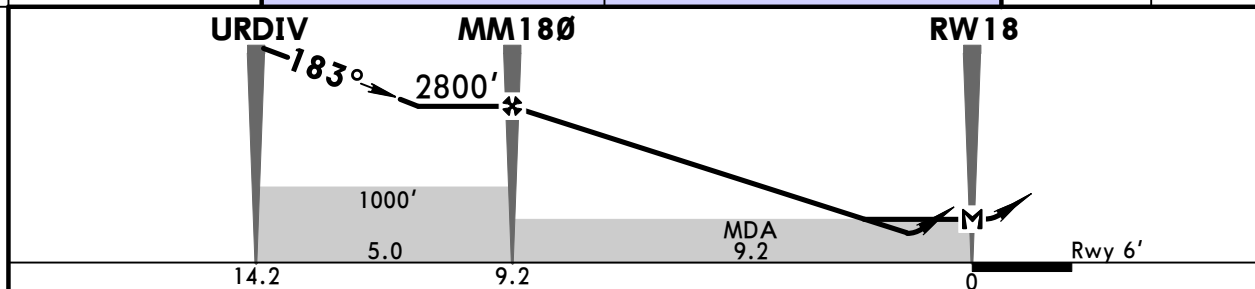
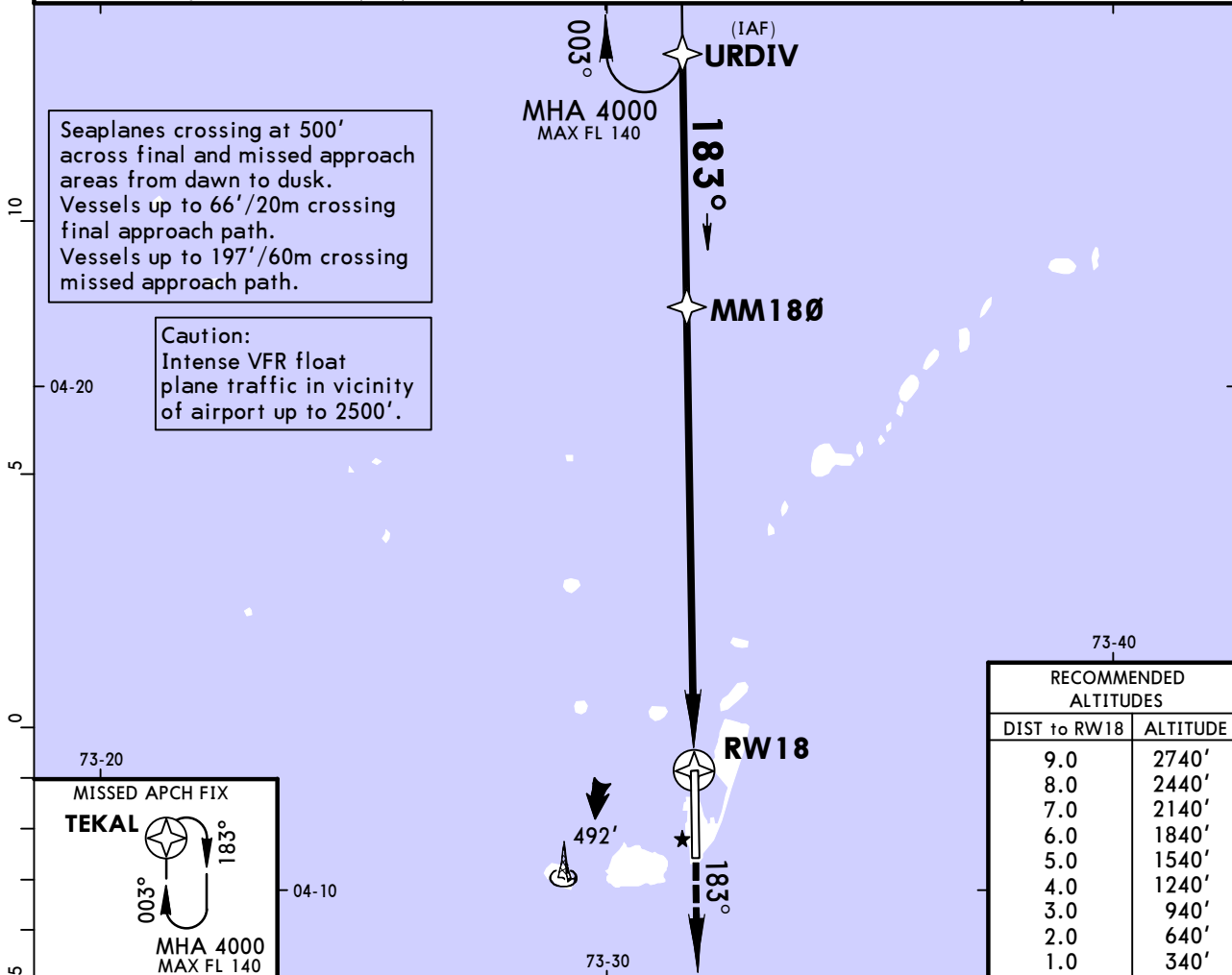
STRAIGHT-IN LANDING RWY 36				CIRCLE-TO-LAND	
ILS		LOC (GS out)			
DA(H) A: 220'(214') C: 240'(234')		MDA(H) 340'(334')			
B: 230'(224') D: 250'(244')					
FULL		ALS out		Max Kts	
A					A
B					B
C	1200m	1600m		C	
D					D
					NOT AUTHORIZED

VRMM/MLE
VELANA INTL

JEPPESSEN
20 OCT 17 **(12-1)**

MALE, MALDIVES
RNAV (GNSS) Rwy 18

ATIS 125.5		MALE Approach 119.7		MALE Tower 118.1	Ground 121.6
RNAV	Final Apch Crs 183°	Procedure Alt MM180 2800' (2794')	LNAV/VNAV DA(H) 290' (284')	Apt Elev 6' Rwy 6'	1500' MSA ARP
MISSED APCH: Climb STRAIGHT AHEAD to 4000' on 183° to TEKAL, or as directed.					
Alt Set: hPa		Rwy Elev: 0 hPa	Trans level: FL 130	Trans alt: 11000'	
Minimum temperature -15°C (5°F).					



Gnd speed-Kts	70	90	100	120	140	160	PAPI	4000'	↑	on 183°	TEKAL
Descent Angle 3.00°	372	478	531	637	743	849					
LNAV/VNAV: MAP at DA											
LNAV: MAP at RW18											

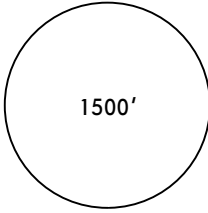
STRAIGHT-IN LANDING RWY 18	
LNAV/VNAV DA(H) 290' (284')	LNAV MDA(H) 390' (384')
1400m	1600m
2000m	

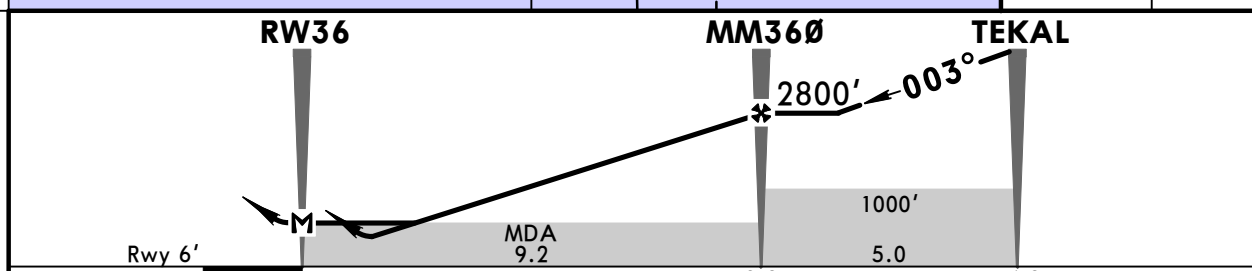
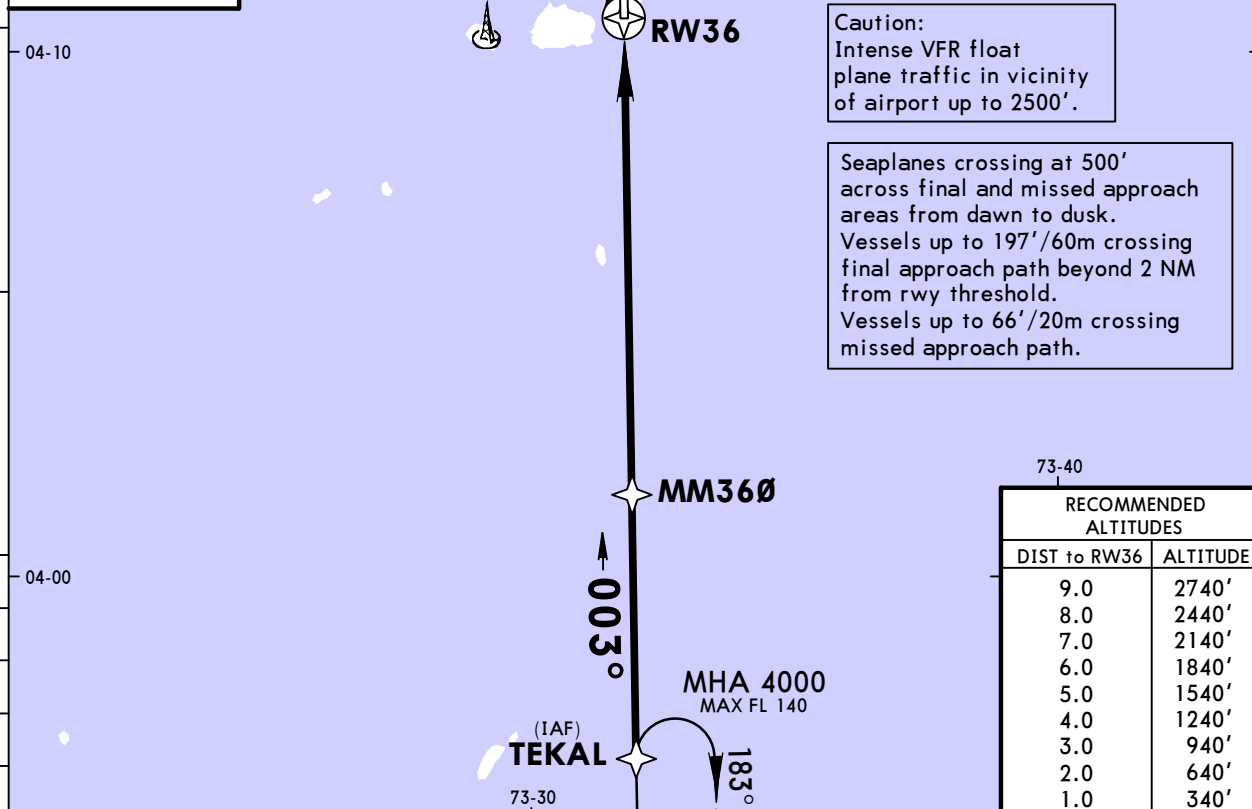
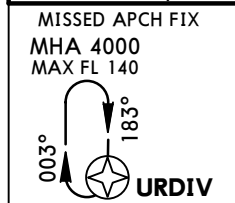
PANS OPS


**VRMM/MLE
VELANA INTL**

JEPPESEN
20 OCT 17 **(12-2)**

**MALE, MALDIVES
RNAV (GNSS) Rwy 36**

ATIS 125.5		MALE Approach 119.7		MALE Tower 118.1		Ground 121.6		
RNAV	Final Apch Crs 003°	Procedure Alt MM360 2800' (2794')	LNAV/VNAV DA(H) 320' (314')	Apt Elev 6' Rwy 6'				
MISSED APCH: Climb STRAIGHT AHEAD to 4000' on 003° to URDIV, or as directed.								
Alt Set: hPa		Rwy Elev: 0 hPa		Trans level: FL 130				Trans alt: 11000'
Minimum temperature -15°C (5°F).						MSA ARP		



Gnd speed-Kts	70	90	100	120	140	160		4000' ↑ on 003°	URDIV	
Descent Angle	3.00°	372	478	531	637	743				849
LNAV/VNAV: MAP at DA										
LNAV: MAP at RW36										

STRAIGHT-IN LANDING RWY 36	
LNAV/VNAV DA(H) 320' (314')	LNAV MDA(H) 390' (384')
ALS out	ALS out
PANS OPS	1500m
	1600m
	2000m
	2000m

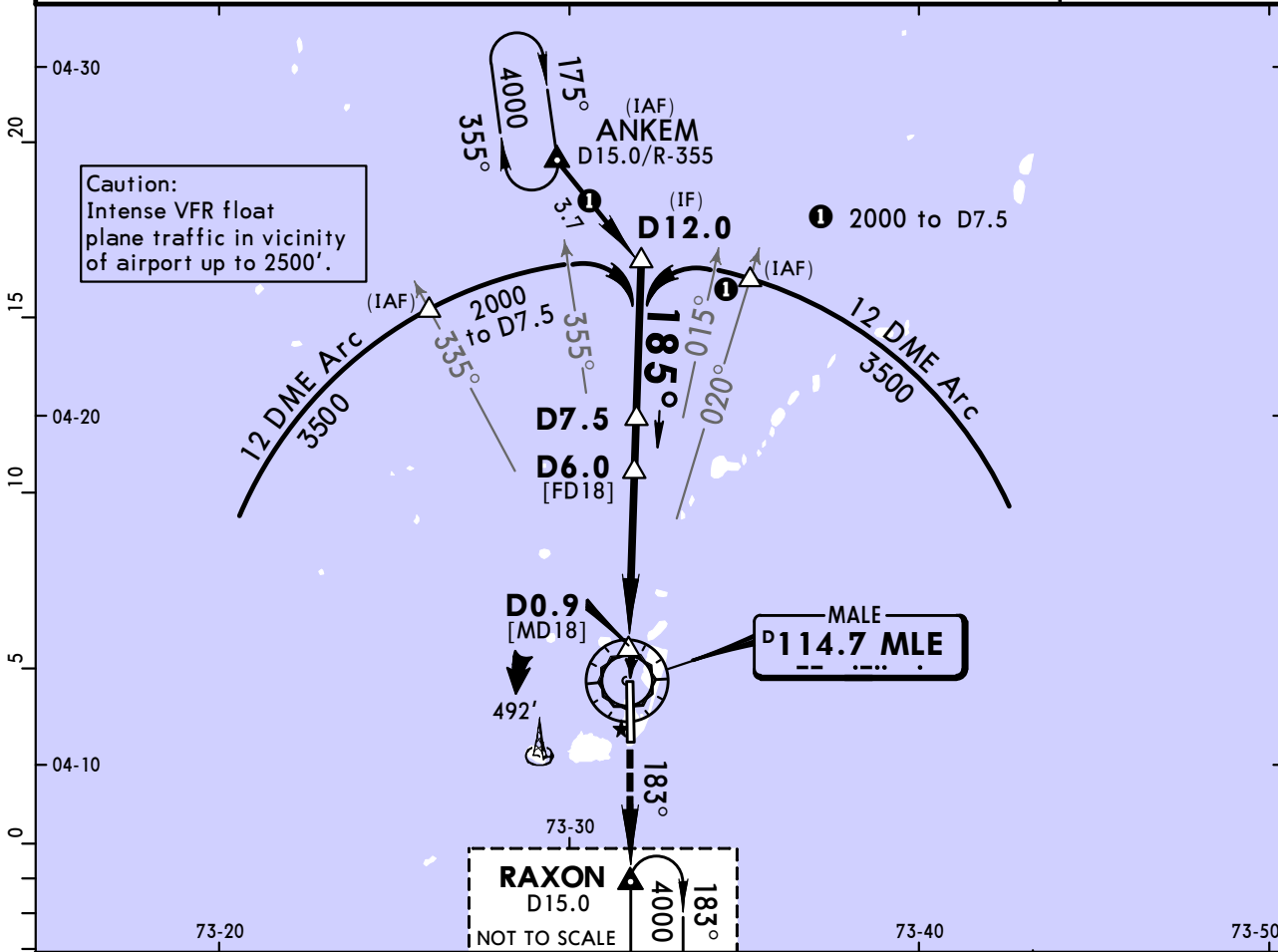
VRMM/MLE
VELANA INTL



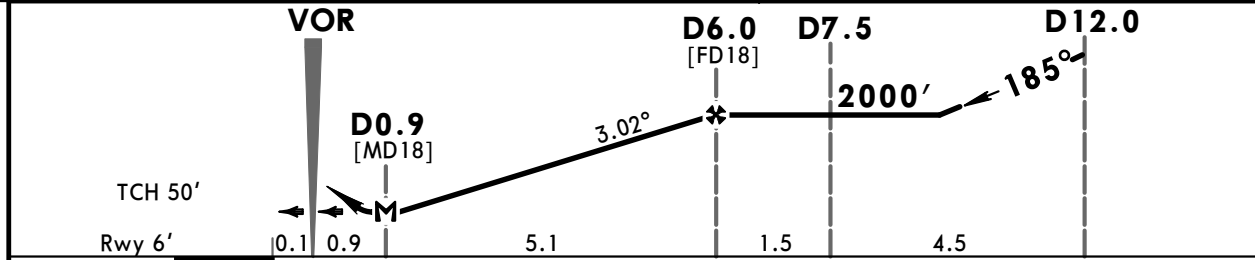
20 OCT 17 **(13-1)**

MALE, MALDIVES
VOR Z Rwy 18

ATIS 125.5		MALE Approach 119.7		MALE Tower 118.1		Ground 121.6	
VOR MLE 114.7	Final Apch Crs 185°	Minimum Alt D6.0 2000' (1994')	MDA(H) 440' (434')	Apt Elev 6' Rwy 6'			
MISSED APCH: Climb on R-183 to 4000', proceed to RAXON and hold, or as directed.							
Alt Set: hPa		Rwy Elev: 0 hPa		Trans level: FL 130			
DME required.						MSA MLE VOR	



MLE DME	2.0	3.0	4.0	5.0
ALTITUDE	720'	1040'	1360'	1680'



Gnd speed-Kts	70	90	100	120	140	160	PAPI	4000' LT on MLE R-183	RAXON
Descent Angle 3.02°	374	481	534	641	748	855			
MAP at D0.9									

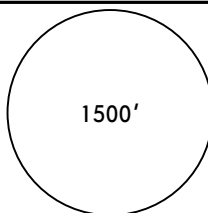
STRAIGHT-IN LANDING RWY 18				CIRCLE-TO-LAND				
MDA(H) 440' (434')								
A	1600m						A	NOT AUTHORIZED
B							B	
C	2000m						C	
D	2400m						D	

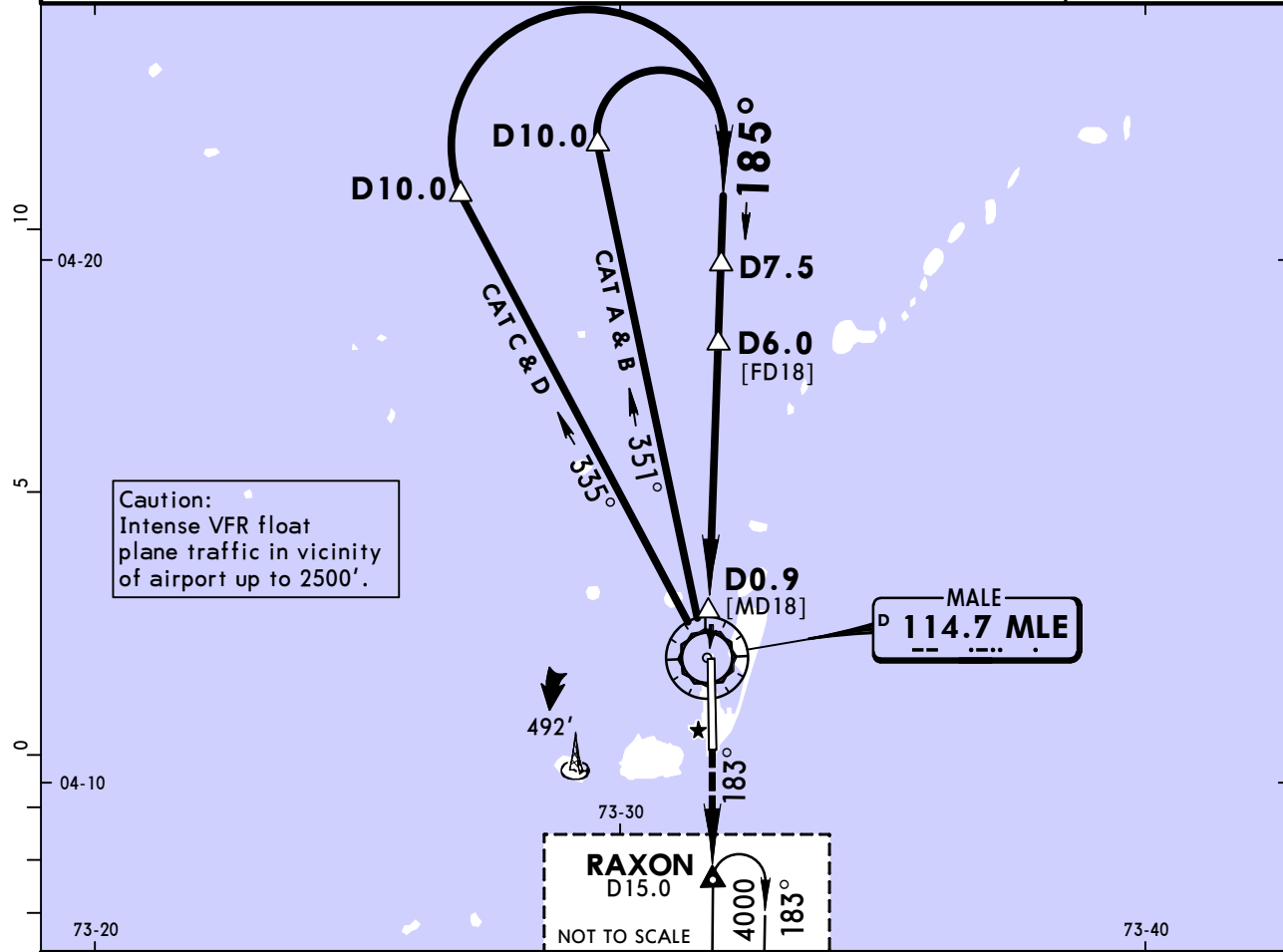
PANS OPS

VRMM/MLE
VELANA INTL

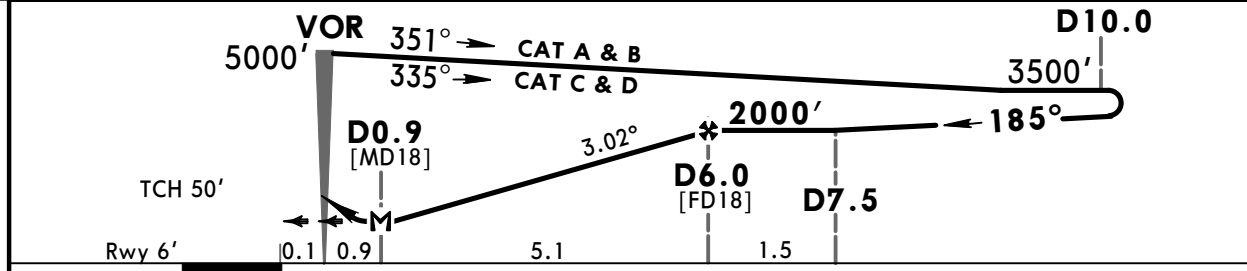
JEPPESSEN
20 OCT 17 **(13-2)**

MALE, MALDIVES
VOR Y Rwy 18

ATIS 125.5		MALE Approach 119.7		MALE Tower 118.1		Ground 121.6	
VOR MLE 114.7	Final Apch Crs 185°	Minimum Alt D6.0 2000' (1994')	MDA(H) 440' (434')	Apt Elev 6' Rwy 6'			
MISSED APCH: Climb on R-183 to 4000', proceed to RAXON and hold, or as directed.							
Alt Set: hPa		Rwy Elev: 0 hPa		Trans level: FL 130			
DME required.		MSA MLE VOR					



MLE DME	2.0	3.0	4.0	5.0
ALTITUDE	720'	1040'	1360'	1680'



Gnd speed-Kts	70	90	100	120	140	160	PAPI	4000' LT on	MLE 114.7	RAXON	
Descent Angle	3.02°	374	481	534	641	748					855
MAP at D0.9											

STRAIGHT-IN LANDING RWY 18				CIRCLE-TO-LAND				
MDA(H) 440' (434')								
A							A	NOT AUTHORIZED
B	1600m						B	
C	2000m						C	
D	2400m						D	

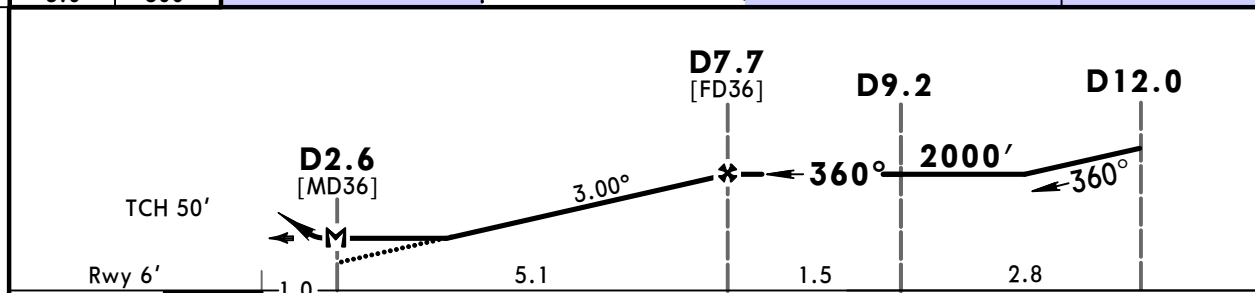
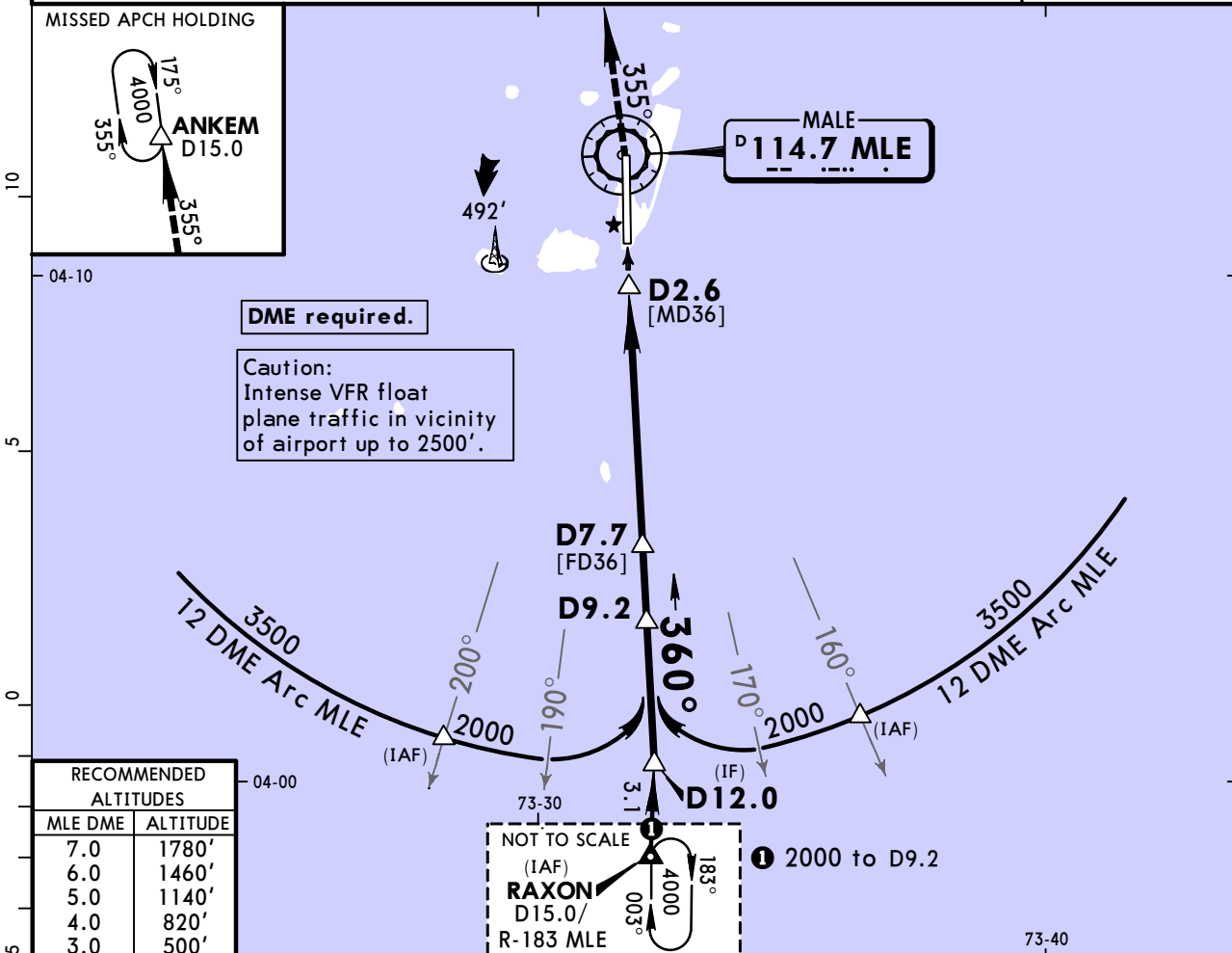
PANS OPS

VRMM/MLE
VELANA INTL

JEPPESEN
20 OCT 17 **(13-3)**

MALE, MALDIVES
VOR Z Rwy 36

ATIS 125.5		MALE Approach 119.7		MALE Tower 118.1		Ground 121.6	
VOR MLE 114.7	Final Apch Crs 360°	Minimum Alt D7.7 2000' (1994')	MDA(H) 440' (434')	Apt Elev 6' Rwy 6'		1500'	
MISSED APCH: Climb o R-355 to 4000', proceed to ANKEM and hold or as directed.							
Alt Set: hPa		Rwy Elev: 0 hPa		Trans level: FL 130		Trans alt: 11000'	
						MSA MLE VOR	



Gnd speed-Kts	70	90	100	120	140	160	HIALS PAPI PAPI 4000' on LT MLE 114.7 R-355
Descent Angle 3.00°	372	478	531	637	743	849	
MAP at D2.6							

STRAIGHT-IN LANDING RWY 36				CIRCLE-TO-LAND			
MDA(H) 440' (434')				ALS out			
A				A	NOT AUTHORIZED		
B	1600m			B			
C	2000m			C			
D	2400m			D			

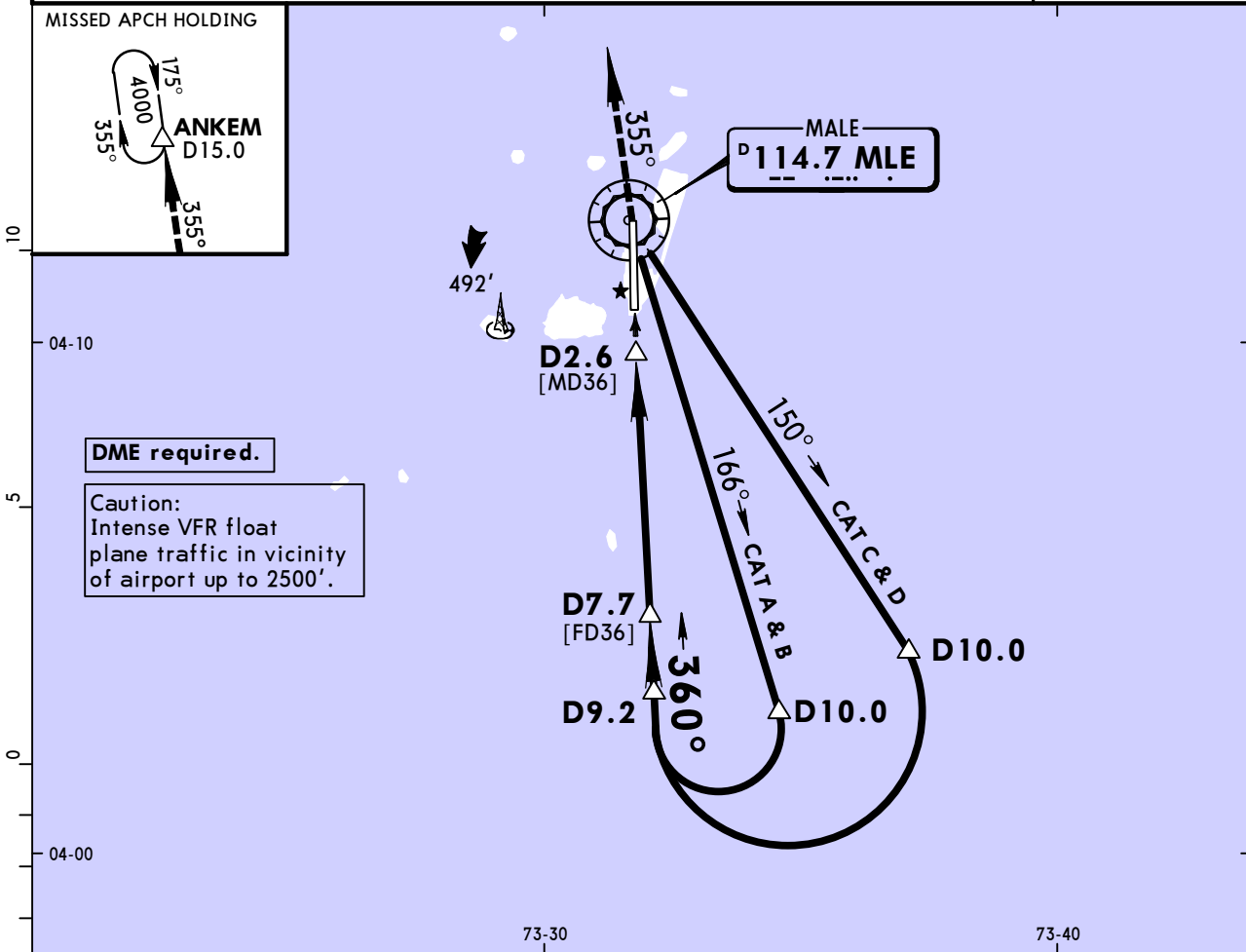
PANS OPS

VRMM/MLE
VELANA INTL

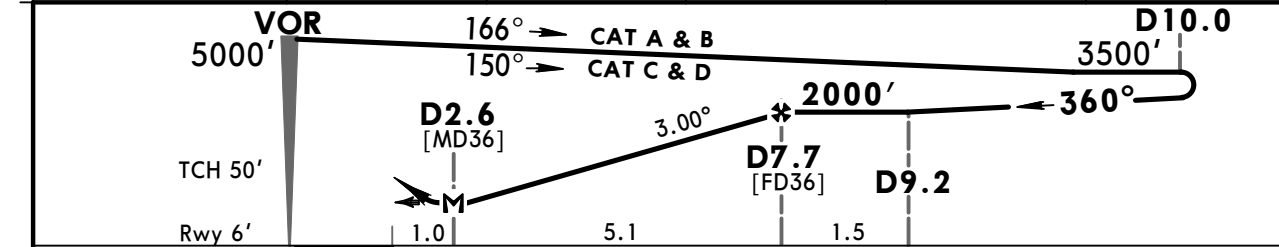
JEPPESEN
20 OCT 17 **(13-4)**

MALE, MALDIVES
VOR Y Rwy 36

BRIEFING STRIP™	ATIS 125.5		MALE Approach 119.7		MALE Tower 118.1		Ground 121.6	
	VOR MLE 114.7	Final Apch Crs 360°	Minimum Alt D7.7 2000' (1994')	MDA(H) 440' (434')	Apt Elev 6' Rwy 6'		<div style="border: 1px solid black; border-radius: 50%; width: 100px; height: 100px; margin: 0 auto;">1500'</div>	
	MISSED APCH: Climb o R-355 to 4000', proceed to ANKEM and hold or as directed.							
Alt Set: hPa		Rwy Elev: 0 hPa		Trans level: FL 130		Trans alt: 11000'		MSA MLE VOR



MLE DME	7.0	6.0	5.0	4.0	3.0
ALTITUDE	1780'	1460'	1140'	820'	500'



Gnd speed-Kts	70	90	100	120	140	160	HIALS PAPI PAPI 4000' on LT MLE 114.7 R-355
Descent Angle 3.00°	372	478	531	637	743	849	
MAP at D2.6							

STRAIGHT-IN LANDING RWY 36				CIRCLE-TO-LAND			
MDA(H) 440' (434')				ALS out			
A							A
B	1600m						B
C	2000m						C
D	2400m						D
NOT AUTHORIZED							

TERMINAL CHART CHANGE NOTICES

Chart Change Notices for Airport VRMM

Type: Terminal

Effectivity: Temporary

Begin Date: Immediately

End Date: Until Further Notice

Due to operation of crane barges in approach path of RWY 36: DA(H) of all precision approaches RWY 36 raised to 460'(454').
VIS are: CAT A, B, C, D: 2400m. MDA(H) of all non-precision approaches RWY 36 raised to 540'(534'). VIS are: CAT A & B:
1600m, CAT C: 2400m, CAT D: 2800m. (10-9S): DA(H) of all precision approaches RWY 36 raised to 460'(454'). VIS are: CAT A
& B: 1500m, CAT C & D: with ALS 1900m, ALS out 2100m. MDA(H) of all non-precision approaches RWY 36 raised to 540'(534').
VIS are: CAT A & B: 1500m, CAT C & D: with ALS 2200m, ALS out 2400m.

Type: Terminal

Effectivity: Temporary

Begin Date: Immediately

End Date: Until Further Notice

During the period from 1730UTC to 1900 UTC and 0100UTC to 0230UTC all acft landings will be restricted to runway 18 only and
runway 36 will be available only for take-offs. From 1900UTC until 0100UTC apt will remain closed.